

SWIFT INSTRUMENTS INC.
OPTICAL & WEATHER INSTRUMENTS
VOLUME 70

BRANCH OFFICE

P.O. BOX 562
SAN JOSE, CA 95106
PHONE: (408) 293-2380
FAX NO. (408) 292-7967



SWIFT INSTRUMENTS INC.
IMPORTERS • MANUFACTURERS

952 DORCHESTER AVENUE • BOSTON, MASSACHUSETTS 02125 • (617) 436-2960
FAX NO. (617) 436-3232

A WORD ABOUT SWIFT . . .

Swift's drive for optical excellence started several years after its founding in 1926 by Robert W. Swift, Sr., when the first roof prism binoculars were imported from Germany. Steady growth continued until 1939, when telescopes, specialty optics, field glasses, riflescopes and weather instruments were also added to the imported line.

When World War II became imminent, Swift was far-sighted enough to acquire a factory and commence manufacturing weather instruments, specialty magnifiers, and pressure gauges. Because Swift was manufacturing products used in the war effort: inspection glasses, pressure gauges and hand sighting levels, we were permitted to manufacture some products for the retail trade.

In the fifties Swift established a branch office in San Jose, California, which later on became its entire scientific instrument division, producing a line of teaching, medical/veterinary and industrial microscopes. Before long this division established a lead in the educational field, not only in the United States, but gradually around the world.

In 1959 the original name of Swift & Anderson, Incorporated was changed to Swift Instruments Inc., and the Swift trademark with its crosshairs was registered in the U.S. and foreign Patent Offices. At the same time Swift Instruments International, SA was incorporated, the Tokyo branch was opened, where all purchasing and inspection was accomplished. Shortly thereafter Associated Manufacturers' Agency was made Swift's exclusive export agent for products shipped to countries other than the United States. This team has helped Swift reach its goal of "OPTICAL EXCELLENCE AND ENDURING QUALITY".

In our 70th anniversary year we are adding a new line of educational microscopes as well as exciting new models for medical and industrial use. In the consumer line we are proud to introduce twelve new binoculars and monoculars, concentrating on the compact, armored and waterproof variety. We are equally proud to show our exciting new line of eight Nighthawk spotting scopes as well as new compact optics for the birding and sporting community. Our astronomical line is completely new and consisting of two reflectors and five refractors, one of which is an all brass equatorial mount.

Swift Instruments is grateful to our many loyal customers for bringing us to our 70th year of operation during which we have grown from a small manufacturer/importer to world exporter of optical products.

We look forward to the continued pleasure of serving our domestic and international customers.

Cordially yours,

HUMPHREY H. SWIFT
PRESIDENT

EXCLUSIVE EXPORT AGENT
ASSOCIATED MANUFACTURERS' AGENCY
NAKANO 6-22-10, NAKANO-KU, TOKYO, JAPAN 164
TELEPHONE: 81-3-3362-4400
FAX NO.: 81-3-3362-4488

AFFILIATED WITH
SWIFT INSTRUMENTS INTERNATIONAL, S.A.
NAKANO 6-22-10, NAKANO-KU, TOKYO
JAPAN 164
TELEPHONE: 8133-362-4711
FAX NO.: 8133-362-4488

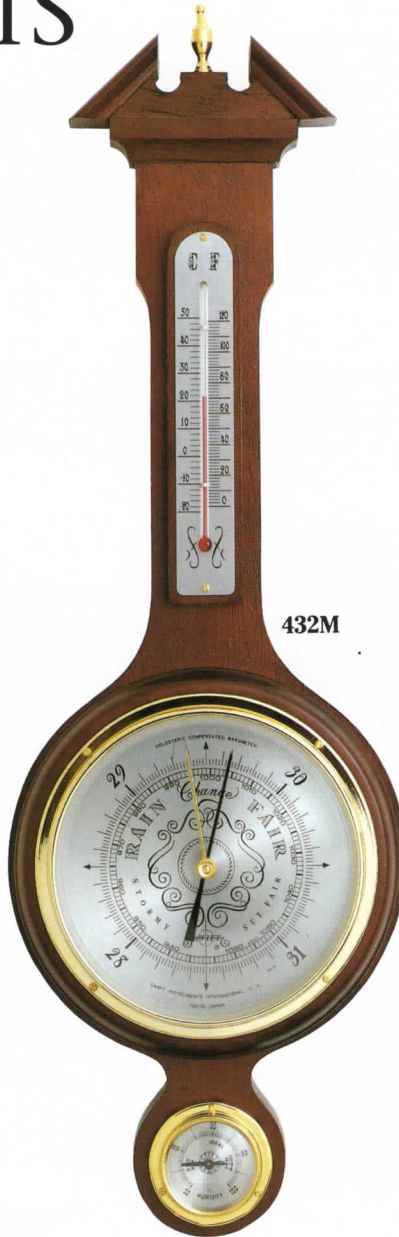
WEATHER & MARINE INSTRUMENTS



407

407 LEXINGTON

Reminiscent of a Tall Ship's wardroom, this weather station is a pleasing blend of gold (brass), rubbed mahogany, and bright silver.—striking in its simplicity. 16¼" x 5¼". Gift boxed.



432M

432M LANSDOWNE - (Mahogany)

Handsome hand-crafted case looks like a New England heirloom. Thermometer, barometer and hygrometer give the complete weather picture. Length—21".

Model 432F (Fruitwood)

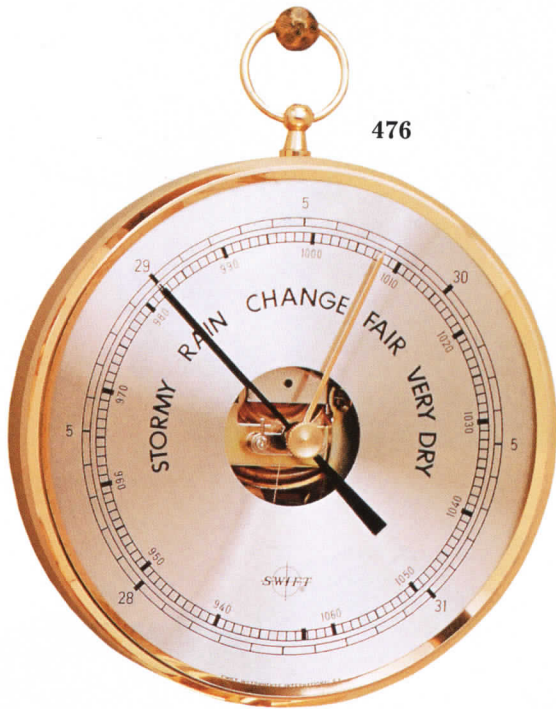
456M SUSSEX—(Mahogany)

Any executive would be proud to receive the magnificent Sussex. Every inch a classic in performance and appearance – it is stylishly decorated with a rich gold and black design on spun silver dials and thermometer scale, a decorative mirror, and brass bezels. This full-sized masterpiece (32") contains a barometer, thermometer and hygrometer.

Model 456F (Fruitwood)



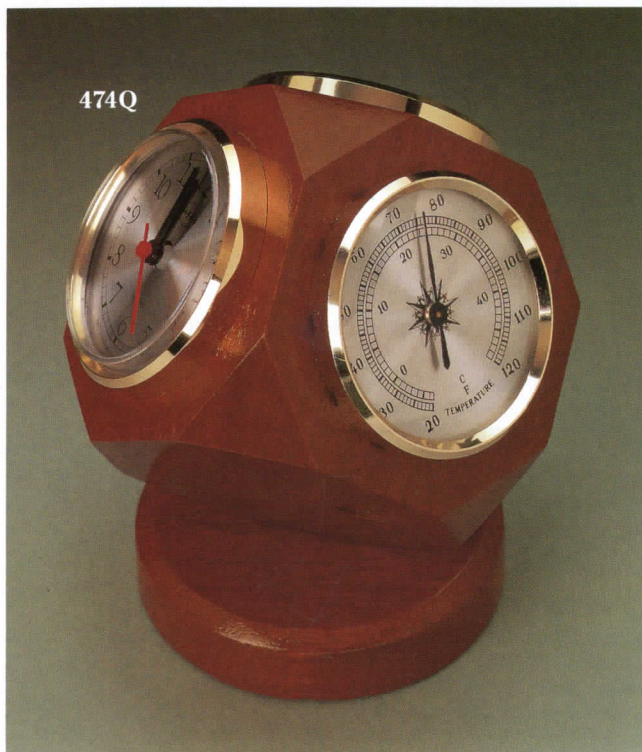
456M



476



477



474Q

474Q. V.I.P. with Quartz Clock

Beautiful, decorative and functional – the V.I.P. has it all. This elegantly fashioned combination has three separate instruments: a barometer, thermometer, and a quartz clock with spun silver dials and brass tone bezels mounted in a mahogany finished block that rotates on a matching felt-padded base. A truly lovely addition to any home or the perfect gift for the person who rates No.1 in your life. Carton boxed.

476 WEATHERMASTER

A precision scientific instrument mounted in a gilded case. The 5" open silver dial is calibrated in 4 inches of mercury and in millibars. Compensated Holosteric movement. Adds a touch of beauty to your den or office. Gift boxed.

477 SCIENTIST

Holosteric barometer with dial calibrated in inches of mercury, centimeters and millibars. Gilded case, 3 1/2" dial. For desk or wall. Gift boxed.



475



440



478

475 WICKFORD

Suitable for the captain's dresser or mantle, this beautifully finished three instrument combination is a wonderful contrast of hand-rubbed mahogany and burnished gold. Dials are basically cream color with touches of gold and black lettering.

Two beautifully finished beveled blocks are hinged together so that they may be straight across or angled. Left block contains an excellent aneroid barometer with set hands. In the right block are a thermometer at the top and a hygrometer at the bottom, which registers relative humidity.

Case - 11" x 5 1/2" x 1 5/8", Dial - 3 1/4", Bezels - 4", Weight - 1 lb. 9 oz. Gift boxed

478 ALTIMETER / BAROMETER

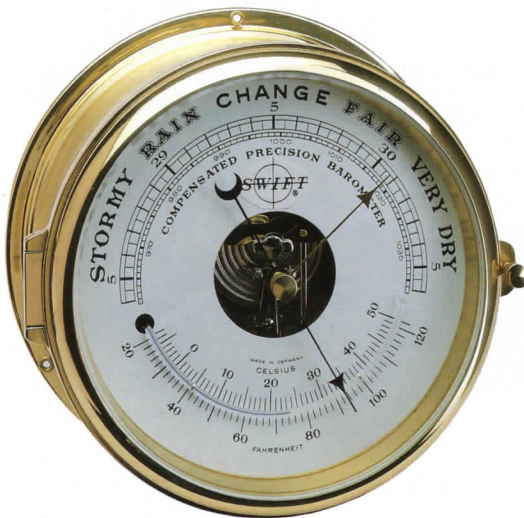
Ingenuously designed, this miniature instrument slides into a plastic case which may be fastened to your dashboard, or zippered into a case with belt strap so it may be carried on your belt as you go hiking. This is three instruments in one - an automobile altimeter, a hiking altimeter, and an aneroid barometer with a dial calibrated in inches of mercury. It is 2 11/16" x 1 15/16". Range: zero to 15,000 feet. Gift boxed.

440 WEATHER STATION

Handsome walnut-grained cabinet suitable for desk or wall mounting. Wind speed, wind direction, and both indoor and outdoor temperatures are indicated electronically. The center dial is a high-quality Holostric barometer. Electronic units are operated by a regular "D" type flashlight battery. Wind speed has two dials measuring from 0 to 25 miles per hour and from 25 to 100 miles per hour. Anemometer cable length - 65'. Individual carton.



412R



413R



430



431



TALL SHIP SERIES (Models 412R & 413R)

This seagoing series of instruments has solid brass cases with hinged, brass-finished bezels – highly polished and protected with baked lacquer. The rear flange has three holes for bulkhead mounting and looks especially beautiful with any wood-panel background. All dials are easy to read in their off-white background with simple Arabic numerals. Each comes with three brass screws and is individually boxed in styrofoam.

412R CONSTELLATION BAROMETER

This compensated barometer, with polished visible movement, is calibrated in inches of mercury and millibars. On the lower half of the dial is mounted a curved liquid thermometer with both Celsius and Fahrenheit scales. The case is of solid brushed brass with polished hinged bezel and faceted mineral-glass crystal. Outside Diameter - 7" x 3 3/4". Visible Dial - 5 3/4". Wt. - 2 lbs. 15 oz.

413R CONSTITUTION CLOCK

A distinguished ship's bell clock striking the watch in bells every four hours (1-8). Its 11-jewel escapement is encased in solid brass with polished hinged bezel and faceted mineral-glass crystal. The dial has 24-hour international marking. A bell silencer and adjusting lever are conveniently available. Outside Diameter - 7" x 3 3/4". Visible Dial - 5 3/4". Wt. - 3 lbs. 14 oz.

431 WATCHMASTER QUARTZ CLOCK

A high-quality German quartz movement is encased in a simple, highly polished and lacquered genuine brass case suitable for bulkhead mounting. A four-inch off-white dial with black Roman numerals and sweep second hand are featured on this attractive and functional clock. Case dimensions: 5" x 1 3/8". Wt: 5 oz. Gift boxed.

430 WATCHMATE BAROMETER/ THERMOMETER

A companion to model 431 – the case is identical. On the open-face dial, exposing the highly polished barometer movement, is mounted a liquid thermometer calibrated in Fahrenheit and Centigrade – with scales 32 to 122 degrees Fahrenheit, or 0 to 50 degrees Centigrade. The temperature compensated barometer is calibrated in inches of mercury and millibars. Wt: 6 oz. Gift boxed.

409 SINGLE BASE

This lovely hand-rubbed mahogany-finished base has a recessed cradle and was designed to hold the 412R or 413R.



SWIFT INSTRUMENTS INCORPORATED

952 DORCHESTER AVENUE

BOSTON, MA 02125

P.O. Box 562

SAN JOSE, CA 95106

TOLL FREE NUMBERS • BOSTON: 1-800-446-1116 • SAN JOSE: 1-800-523-4544

792TR Tripod (Fits All Swift Scopes)	120.00
SS3 Car Window Mount	56.00

RIFLESCOPES, PISTOLSCOPES + RINGS (30 MODELS)

<u>MODEL NO.</u>	<u>NAME</u>	<u>SUGG. RETAIL</u>
600	Riflescope 4X.15	\$18.00
601	Riflescope 3-7X,20	42.00
649	Riflescope 4-12X,50	218.00
649M	Riflescope 4-12X,50 MATTE	220.00
650	Riflescope 4X.32	80.00
653	Riflescope 4X.40WA (Wide Angle)	104.00
653M	Riflescope 4X.40WA Matte	106.00
653S	Riflescope 4X.40WA Silver	106.50
654	Riflescope 3-9X,32	102.00
656	Riflescope 3-9X,40WA	112.00
656M	Riflescope 3-9X,40WA MATTE	114.00
656S	Riflescope 3-9X,40WA Silver	114.50
657	Riflescope 6X,40	102.00
658	Riflescope 2-7X,40WA	140.00
658M	Riflescope 2-7X,40WA Matte	142.00
659	Riflescope 3.5-10X,44WA	215.00
659M	Riflescope 3.5-10X,44WA Matte	216.00
659S	Riflescope 3.5-10X,44WA Silver	217.00
664R	Riflescope 4-12X, 40	146.00
664RM	Riflescope 4-12X,40 Matte	147.00
664RS	Riflescope 4-12X, 40 Silver	148.00
665	Riflescope 1.5-4.5X,21	102.00
666M	Shot Gun Scope 1X.20 Matte	110.00
667	Fire Fly Red Dot 1X.30	218.00
668M	Compact 4X.32 Matte	99.00
669M*	Riflescope 6-18X, 44 Matte	195.00
661	Pistolscope 4X. 32	118.00
663B	Pistolscope 2X.20	118.00
663S	Pistolscope 2X.20 Silver	118.00
670M*	Pistolscope 2.5-7X, 28	155.00
857	Rings For 30-32 MM	20.00
858	Rings For 40-42 MM	22.00
	Shoulder Patch	1.50

READERS AND MAGNIFIERS

<u>MODEL NO.</u>	<u>NAME</u>	<u>SUGG. RETAIL</u>
501	Reading Glass 2 1/2"	\$7.00
502	Reading Glass 3"	7.75
503	Reading Glass 3 1/2"	9.50
504	Reading Glass 4"	12.00
505	Reading Glass 5"	19.50
528	FireFly Magnifier 1 3/4"	4.00
529	FireFly Magnifier 3 3/4"	9.00
529iR	FireFly Magnifier W/Infra-Red Light	9.75
539	Gooseneck Magnifier 4"	40.00
546	Square Pocket Magnifier 4X	3.75
561	Linen Tester 5X	24.00
568	Achromatic Loupe 5X, 12X	10.75
569	Pocket Magnifier 5X, 10X	9.95
572	Triplet 20X	45.00
573	Doublet 10X (Metal Case)	40.00
574	Doublet 10X (Plastic Case)	14.95

575	Rectangular Reader	7.95
576	Bi-Focal Rectangular Reader 2X+5X	20.00
580	Linen Tester 9X-1/2"	12.00
583	Split Loupe 3X + 6X	25.00
584	High Power Doublet 10X	18.00
585	Triplet 10X Wide Field	58.00
592	Chest Magnifier	12.00
595	Tripod Magnifier	12.00
596*	Loupe 16X	18.00

MISCELLANEOUS

<u>MODEL NO.</u>	<u>NAME</u>	<u>SUGG. RETAIL</u>
590	Hand Sighting Level	\$85.00
791	Bedspecs	90.00

T MOUNTS

<u>MODEL NO.</u>	<u>NAME</u>	<u>SUGG. RETAIL</u>
T1	Practica	\$20.00
T4	Minolta	20.00
T4A	Minolta (7,000 + 9,000)	20.00
T5	Nikon	20.00
T6	Canon	20.00
T6A	Canon EOS	30.00
T13	Konica	20.00
T14	Leicaflex	30.00
T15	Olympus OM	30.00
T16	Pentax K+M	20.00
T17	Leica M Series	30.00
T18	Yashica	20.00
T18A	Yashica 230-A.F.	30.00
T19	16MM Cine	30.00

WEATHER INSTRUMENTS (9 MODELS)

<u>MODEL NO.</u>	<u>NAME</u>	<u>SUGG. RETAIL</u>
407	Lexington Combination	\$95.00
432M/F	Lansdowne Combination (Mahogany or Fruitwood)	108.00
440	Weather Station	1,090.00
456M/F	Sussex Combination (Mahogany or Fruitwood)	240.00
474Q	V.I.P. Combination w/Quartz Clock	92.00
475*	Wickford Combination	108.00
476	Weathermaster Barometer	65.00
477	Scientist Barometer	58.00
478	Altimeter / Barometer	42.00

MARINE INSTRUMENTS (4 MODELS)

<u>MODEL NO.</u>	<u>NAME</u>	<u>SUGG. RETAIL</u>
412R	Constellation Barometer	\$250.00
413R	Constitution Clock (Quartz)	350.00
430	Watchmate Barometer/Thermometer	92.00
431	Watchmaster Clock (Quartz)	76.00

(*) = New Products

(A) = Armored