



**CHEMICAL & PHYSICAL
APPARATUS**

AND ASSAY GOODS

LABORATORY SUPPLIES

FOR

**COLLEGES, MINES, MILLS, AND
MANUFACTURING ESTABLISHMENTS.**



EIMER & AMEND

NEW YORK

1903



Established 1851.

1903.

Incorporated 1897.

ILLUSTRATED
WHOLESALE CATALOGUE
WITH PRICES CURRENT OF
Chemical & Physical Apparatus
AND ASSAY GOODS,
College, Mines, Mills, and Laboratory Supplies



IMPORTED AND MANUFACTURED BY

EIMER & AMEND,

205, 207, 209 & 211 THIRD AVE.,

18th St. Station Elevated R. R.

NEW YORK.

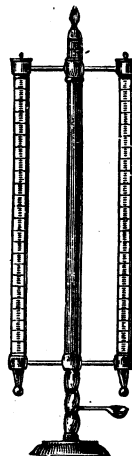
	Ordinary Quality.	Standard Quality.
6631. Hydrometers, for coal oil, 50 cts., for gasoline.....	.75	
6632. Ditto, ditto, with thermometer.....		\$1 75
6633. Ditto, Oechsle's, for wine and must, (Vinometer).....	.75	
6634. Ditto, for salt solutions, in box, (Salimeter).....	.50	
6635. Ditto, for silver solution, in box.....	.65	
6636. Ditto, for sugar, (Saccharometer) in box.....	.50	
6637. Ditto, ditto, Ventzkes, sweet water spindle.....		1 00
* 6638. Ditto, for urine, (urinometer), cylinder included, ranging 1,000 to 1,060, small.....	.50	
6639. Ditto, ditto, standard.....		.60
6640. Ditto, ditto, ranging 1,000 to 1,040, Vogel & Neubauer's.....		.60
6641. Ditto, ditto, ranging 1,000 to 1,030, " ".....		.60
6642. Ditto, ditto, ranging 1,030 to 1,060 " ".....		.60
6643. The two latter making a set, if taken together.....		1 00
6644. Ditto, ditto, for urine, (urinometer), with thermometer attached to the urinometer, cylinder included, 1,000 to 1,060.....		1 60
6645. Ditto, 1,000 to 1,030.....		1 60
6646. Ditto, 1,030 to 1,060.....		1 60
6647. Ditto, set of two.....		2 75
6647a. Ditto, for batteries.....	.50	



6638



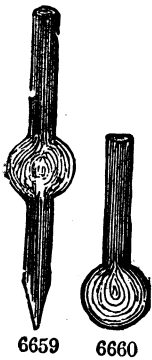
6648-6649



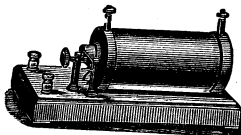
6653

* 6648. Ditto, for urine, according to Dr. Squibb, improved by E. & A., with table of corrections, with cylinder, in box.....		1 00
* 6649. With thermometer.....		2 00
6650. Hydrometer, Twaddle's, for liquids heavier than water, the degrees marked on the scale, multiplied by 5 and added to 1,000 gives the specific gravity.		
No. 1..... 0° to 26°.....	.60	1 00
2..... 24° to 48°.....	.60	1 00
3..... 48° to 72°.....	.60	1 00
4..... 72° to 102°.....	.60	1 00
5..... 102° to 134°.....	.60	1 00
6..... 134° to 160°.....	.60	1 00
6651. Ditto, ditto, set of six, small size, in leather case, standard, complete.....		6 50
Ditto, Nichols, (see areometer, page 42)		
Hydrometer Jars, (see Cylinders Lipped.)		
6652. Hydrostatic Balance, with beam, pans and column of brass.....		\$12 50
See also Balances for taking specific gravity.		
* 6653. Hygrometer, August's, 2 milk glass scale Thermometers, 20 to + 40° C in $\frac{1}{10}$, on stand with porcelain base, for estimating moisture.....		12 00

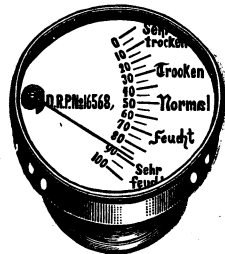
- 6654. Hygrometer, Mason's plain \$2 50
- 6655. Ditto, Masons, Hicks' make 5 00
- * 6656. Ditto, Mitthoff's, round, German, small 2 25
- * 6657. Ditto, ditto, ditto, medium 7 50 Large..... 9 00
- * 6658. Ditto, ditto, wath form, in case 9 50
- * 6658a. **Ice Machine System**, Wegelin and Hübner's, Ice produced by evaporation of ammonia, very simple, one filling will last for years of continuous use, everybody can handle it. Complete with furnace and water tank.
 Machine No. 2 furnishes 4 lbs. of ice every 3 hours, price, wrought iron... \$150 00
 Rivetted..... 130 00
 Machine No. 4 furnishes 8 lbs. of ice every 5 hours, price, wrought iron.... 190 00
 Rivetted 170 00



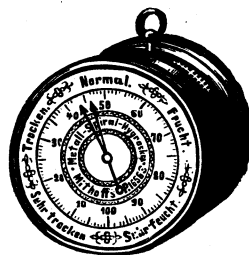
6659 6660



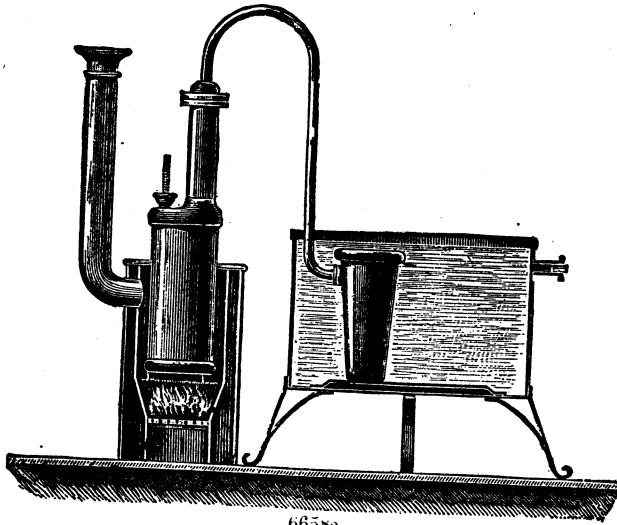
6661



6656



6657



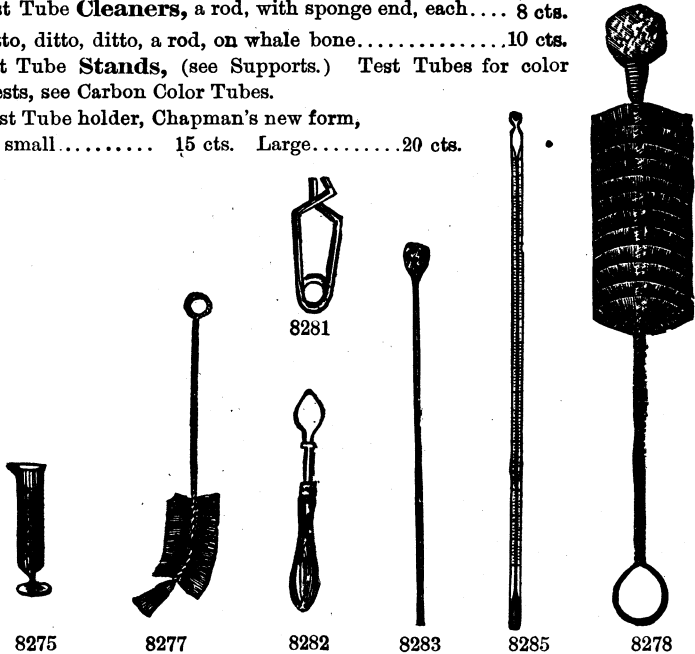
6658a



6658

- * 6659. Ignition Bulb Tubes, hardest Bohemian glass. 5 in. 6 in.
- * 6660. Ditto, ditto, ditto, " " " " .20 .25 cts.
- * 6661. **Induction or Ruhmkorff Coil**, with commutator and automatic break ; on polished mahogany base, with condenser and pole changer.
 Giving About $\frac{1}{8}$ $\frac{1}{4}$ $\frac{3}{8}$ $\frac{1}{2}$ $\frac{5}{8}$ $\frac{3}{4}$ 1 $1\frac{1}{4}$ $1\frac{1}{2}$ $1\frac{3}{4}$ 2 in. spark.
 Price, \$3.80 5.00 8.00 9.80 14.50 17.50 22.00 27.00 32.00 40.00 50.00
 3 4 5 6 8 in. spark.
 70.00 85.00 100.00 140.00 190.00
- 6662. **Induction Wires**, according to quality and insulating coat, from 1 cent to 20 cents. For sizes, see Wires.

- * 8275. Test Tubes, on foot, graduated in cubic centimeters.
 5 CC in $\frac{1}{2}$ 10 CC in $\frac{1}{2}$ 15 CC in $\frac{1}{2}$ 25 CC in $\frac{1}{2}$
 .25 .40 .45 60 cts.
- Ditto, ditto, without foot, graduated, see color carbon tubes.
- 8276. Test Tube **Brushes**, plain, galvanized wire, each..... 5 cts.
- * 8277. Ditto, ditto, ditto, brass wire..... 8 cts.
- * 8278. Ditto, ditto, ditto, with sponge end, each 10 cts. (thick or thin,) per dozen .90 cts.
- * 8279. Test Tube **Clamp**, made of wood usual form, (see figure 5955), each 15 cts.
- 8280. Ditto, ditto, ditto, with spring, larger, (see figure 5956,) each..... 40 cts.
- * 8281. Ditto, ditto, ditto, Bunsen's, made of brass, each..... 30 cts.
- * 8282. Ditto, ditto, ditto, holder, metal on wooden handle..... 40 cts.
- * 8283. Test Tube **Cleaners**, a rod, with sponge end, each.... 8 cts.
- 8284. Ditto, ditto, ditto, a rod, on whale bone..... 10 cts.
- Test Tube **Stands**, (see Supports.) Test Tubes for color tests, see Carbon Color Tubes.
- 8284a. Test Tube holder, Chapman's new form,
 small..... 15 cts. Large..... 20 cts.



THERMOMETERS.

Superior quality, all made of Weber's resistance glass.

- * 8285 **Thermometers, chemical, scale clear engraved on the stem, white back, or on enclosed milk glass scale, best European make, in pasteboard case, very exact. Graduated up to about 100° Celsius.....\$1 25**
- " " 200° Celsius..... 1 40
- " " 250° Celsius..... 1 60
- " " 300° to 360° Celsius..... 1 75
- " " 212° Fahrenheit..... 1 25
- " " 350° Fahrenheit..... 1 40
- " " 600° Fahrenheit..... 1 75
- 8286. Ditto, same as above, stem, graduated on one and the same thermometer in **300° Celsius and 600° Fahrenheit, \$2.50, or 100° C. and 212° F.....\$1 75**
- 8286a. Thermometers with certificate of corrections, each, in 1-1.....\$7 00
 in 1-5, \$8 00; in 1-10... 9 50

(If with magnifying front 20% extra.)

No. 253. Counter Scale, in glass case, nickel plated throughout; very handsome and accurate; sensitive to 2 grains; may be loaded with 20 lbs. without damage. Beam inside of glass case reading to 8 oz. Pans 9 in. diameter. Without weights.....\$35 00

No. 206. Counter Scale. Beams 12 in., nickel plated pans 9 in., capacity 20 lbs., sensitive to 10 grains. Side beam to 16 oz. by $\frac{1}{4}$ oz. Price...\$12 50

No. 206t. Same Scale, with triple beam.

Avoird. reading to 16 oz. by $\frac{1}{4}$ oz.

Troy " to 14 $\frac{1}{2}$ oz. by 2 pwts.

Metric, " to 450 gms. by 5 gms. Price.. \$14 00

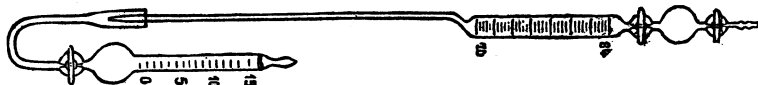
No. 207. Same Scale, without side beam. Price..... 10 75

Either Scale, all nickel plated, costs \$3.00 extra.

Besides the above, there are many other styles of the Torsion Balance, and we shall be pleased to mail special catalogue on application.

— 9016. **Weights, Analytical, new platinum plated, non-corrosive, of greatest accuracy.** In box, with loose or hinged cover.

20 grammes to 1 milligramme, with riders.....	\$12 00
50 " " " " " "	14 00
100 " " " " " "	16 00
200 " " " " " "	24 00



9017

* 9017. **Barometer, syphon, new form, with absolutely tight patent stopcocks; easily filled or emptied; graduated in $\frac{1}{2}$ millimeters.** Price, unfilled.....\$14 00

The advantage of this barometer over the ordinary form is apparent. The latter is troublesome to fill, and when filled before shipping is very liable to breakage in transit.

Battery, Edison-Lalande; the most economical and convenient on the market. Its advantages are:

1st. High and constant available E. M. F.

2d. No local action, and consequent loss of material, while the cell is idle.

The chemical action in cell is less than 1% per month.

3d. Extremely low internal resistance.

4th. Cheap materials, easily obtained.

5th. No attention or inspection required until all the energy of its elements is exhausted.

6th. Convenience of form, and freedom from noxious fumes or chemical deposits.

7th. No polarization.

8th. The Edison-Lalande battery is now made in seven different types, each one of which is especially designed for the kind of work named.

○ 9018. Type "BB" Cell, Annunciator model. Capacity, 50 ampere-hours. Price complete, porcelain jar.....\$1 50

Price of renewal parts—

Copper oxide plate (capacity 1 charge).....\$.24

Zinc plate (capacity 1 charge)..... .28

Can containing 2 sticks caustic potash (1 charge)..... .15

Bottle heavy paraffine oil (sufficient for one charge)..... .05

○ 9021. Type "R" Cell, Western Union Telegraph model. Capacity, 300 ampere-hours. Price complete, porcelain jar.....\$2 90

Price of renewal parts—

2 Zinc plates (capacity 1 charge), 25c. each.....\$.50

1 Copper oxide plate (capacity 1 charge)..... .55

Can containing 2 sticks caustic potash (1 charge)..... .28

Bottle heavy paraffine oil (sufficient for one charge)..... .07