

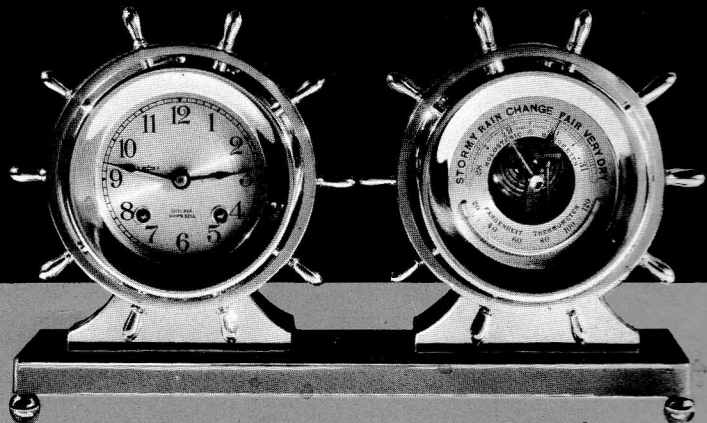
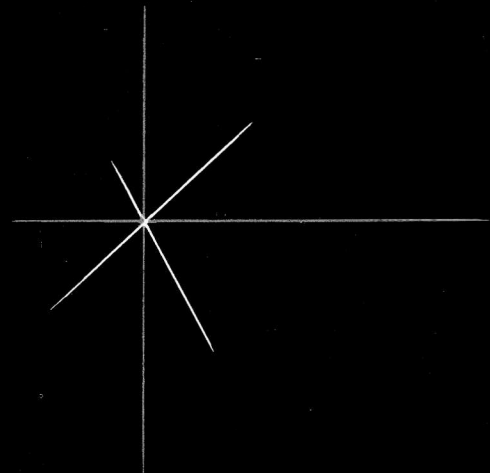
*Aristocrats*

**CHELSEA**

*of*

**CLOCKS**

*Time*



WHEREVER you may search you will find no finer timepiece than a Chelsea — for precision, for workmanship, or for beauty. Whether you are considering the purchase of a Chelsea Clock for yourself — or as a gift for some special purpose — it will give you the satisfaction that comes of owning, or giving, the finest thing of its kind in the world. Chelsea is a clock that the owner will live with, and by, for a lifetime. It becomes an intimate part of the home in which it is placed — through generations — a constant and everlasting reminder of the care and wisdom shown in choosing it. . . .

# The Admiral

A mantel clock that commands immediate attention.

With Raised Bronze Numerals on a silvered dial, the Admiral is an outstanding design in a group of beautiful presentation pieces made by Chelsea.

The Admiral has a case and base of solid cast bronze and is finished in Statuary Bronze.

It is equipped with an eight-day jeweled Chelsea lever movement of latest design that strikes the regulation Ship's Bells on the hour and half hour.

See Page 15 for Ship's Bell Striking Code.

*Size:*

Dial 8½"

Height 12½"

Width 14"



## The Carver

In this distinguished piece, Chelsea has reproduced an 18th century English Wall clock with barometer.

With its beauty, dignity and usefulness, the Carver makes a distinguished decoration for rooms of any period.

A period clock, yet as modern as tomorrow, it is a most graceful and desirable clock for the home, office or lounge.

Solid mahogany inlaid case. Chelsea eight-day jeweled lever movement without strike. Aneroid barometer. Accurate, easily-read thermometer. High grade hygrometer.

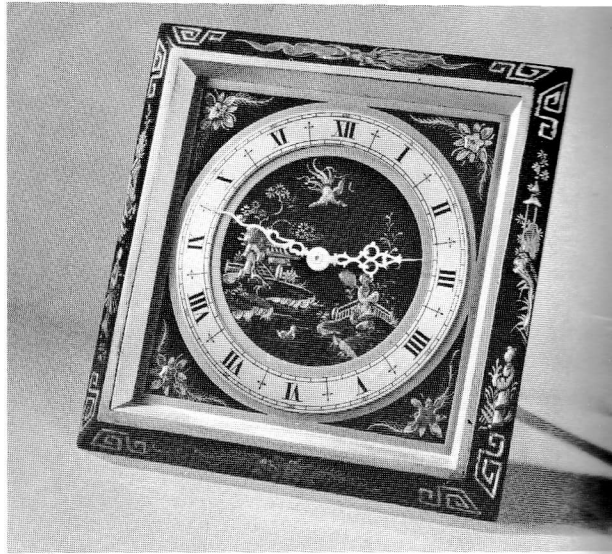
Hand-rubbed inlaid mahogany with polished brass trim.

Standard finish is brownish shade of mahogany beautifully executed to highlight the maximum beauty of graining.

Any finish color to sample can be worked up on special order.

*Three-quarter Size* — 4" clock dial and 6" barometer dial, height 30 $\frac{3}{4}$ ".

*Full Size* — 6" clock dial and 7 $\frac{1}{2}$ " barometer dial, height 38 $\frac{1}{2}$ ".



## The Chinese Lacquer

A beautiful Chelsea clock, rich and luxuriant. Faithful reproduction of colored lacquer work first applied to clocks in the latter half of the 17th century.

Chelsea eight-day nonstriking jeweled lever movement of latest design, with micrometer regulator and back wind and set. Solid bronze frame, finished in Chinese Lacquer, hand applied.

This model can be furnished with self-starting synchronous electric movement if desired.

An outstanding feminine favorite and one that is completely distinctive for use with the many Radio and Television cabinets in Chinese designs.

Also available in background of rich Chinese Red or Jade Green and Ivory.

*Size:* Dial 6" (6 $\frac{3}{4}$ " square).





# The Claremont

The Claremont is the pride of Chelsea's craftsmen. A presentation gift that has no equal. Consistently used as a yachting trophy and a most popular presentation gift to mark an anniversary, a milestone of mutual progress, the promotion or retirement of an executive or "Skipper" — or any occasion that calls for a rare trophy or gift.

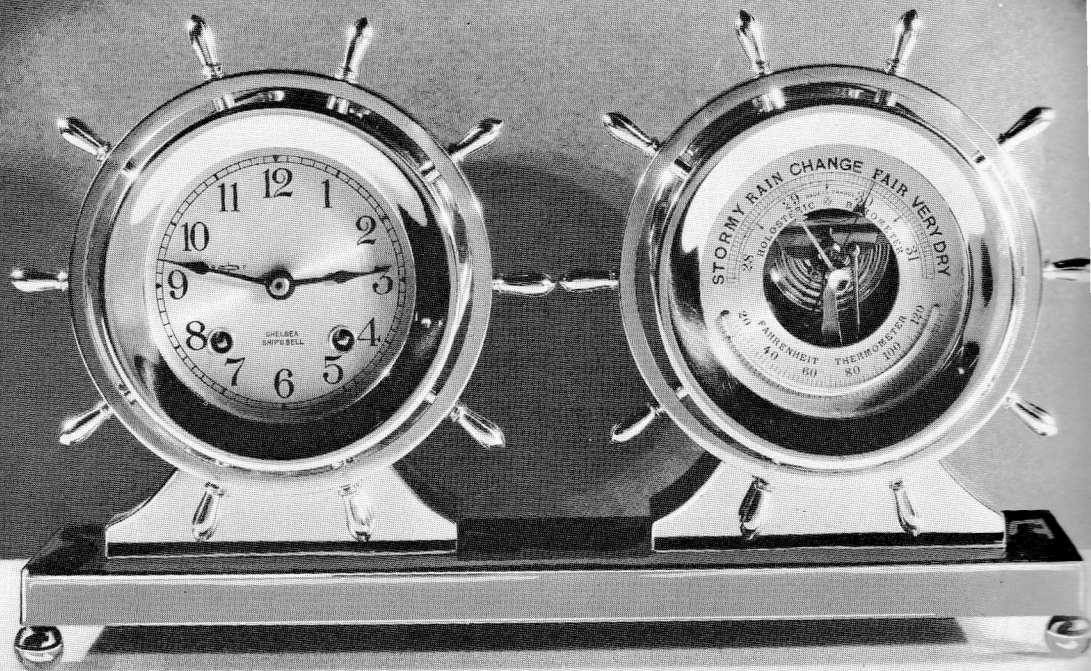
This pride of Chelsea is finished in a combination of statuary bronze and polished yellow brass.

It is equipped with an eight-day jeweled Chelsea lever movement that strikes the regulation ship's bells on the hour and half hour, and a holosteric barometer of finest quality and workmanship throughout, with Fahrenheit thermometer.

The solid bronze base is ideally suited for any hand-engraved inscription.

Size:

Dial  $3\frac{3}{4}$ "      Height  $8\frac{1}{2}$ "  
Width  $14\frac{1}{2}$ "





## *The Comet*

A superb new desk or occasional clock of nautical design for home or office use.

Mounted on a suspension cradle, the case can be easily tilted to any angle required for easy reading. The Comet weighs but two lbs. four oz. and can also serve as a very dependable and accurate time-piece for travel use.

Solid cast bronze case and sub-base with polished yellow brass cradle and handles, mahogany base, with eight-day 11-jeweled nonstriking lever movement of carefully engineered postwar design incorporating micrometer regulation for close, accurate time-keeping.

*Size:*

Dial  $2\frac{3}{4}$ "

Height 5"

Width  $4\frac{3}{4}$ "

# *The Constitution*

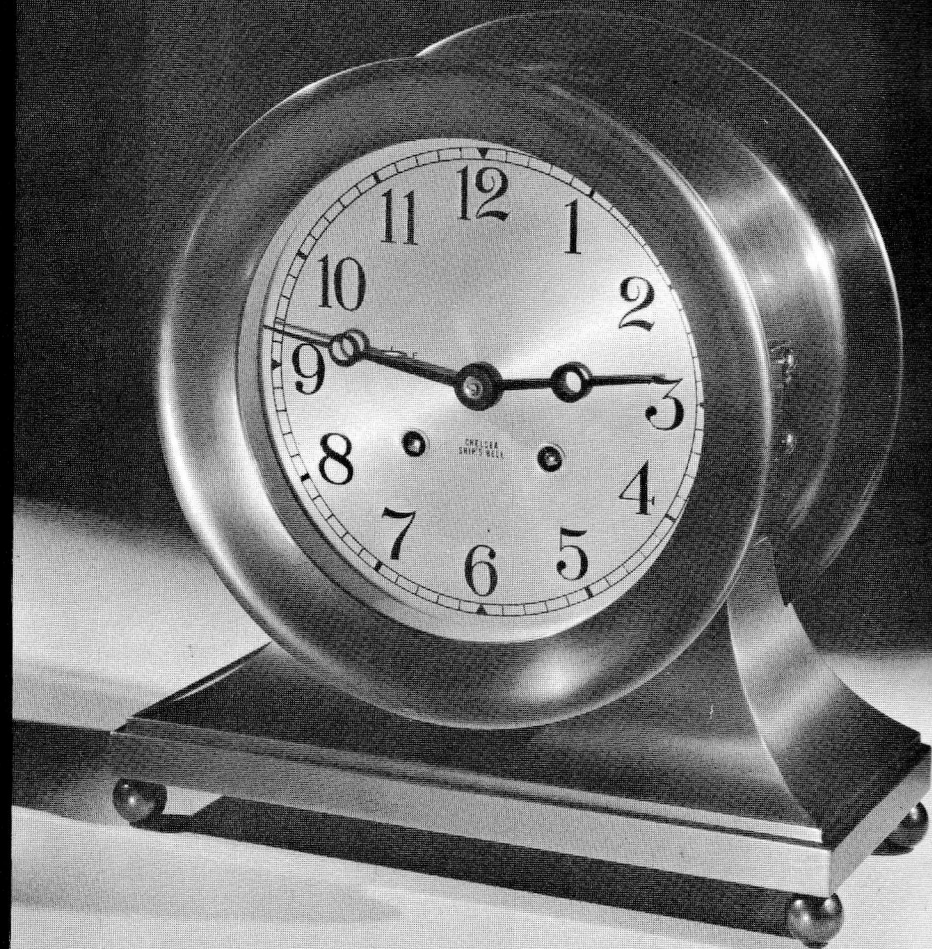
Cased in solid bronze and equipped with a Chelsea eight-day jeweled movement, the Constitution is a favorite among Chelsea Ship's Bell Clocks. It has dignity and lasting charm. Finish — Statuary Bronze.

*Size:*

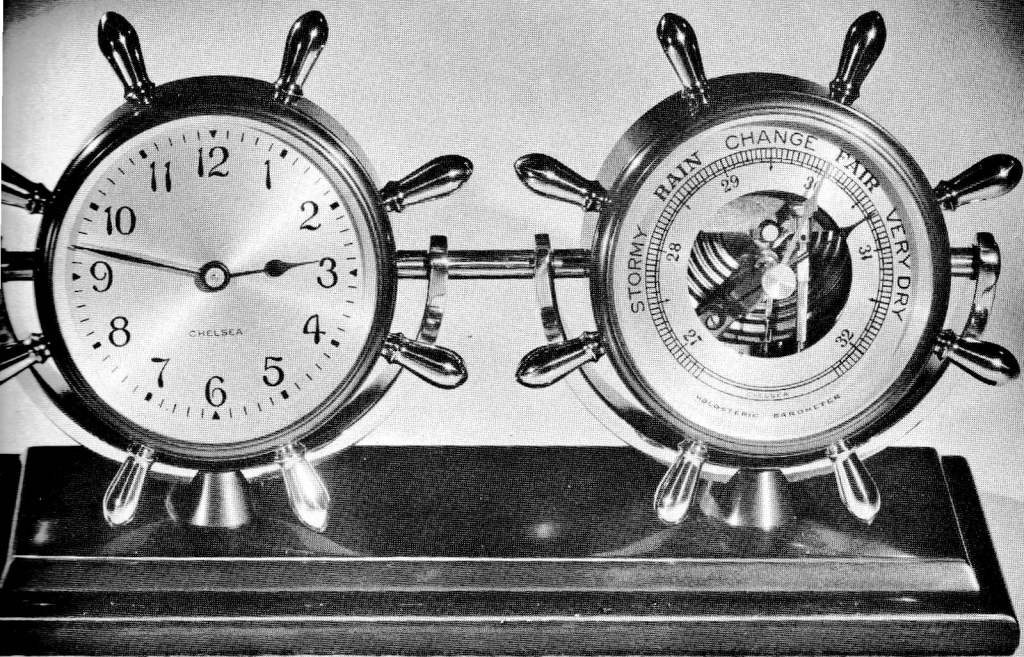
Dial 6"

Height 9"

Width 9 $\frac{1}{8}$ "







## *The Corvette*

The new Corvette Model with its handsome nautical design is Chelsea's lowest priced clock-barometer set of the ship's wheel type. The clock and barometer cases are mounted on suspension cradles so that both pieces can be adjusted to desired position.

Solid bronze cases and sub-base with polished yellow brass cradles and handles, mahogany base; with eight-day 11-jeweled nonstriking lever movement of carefully engineered postwar design incorporating micrometer regulation for close, accurate timekeeping. The aneroid barometer is of finest quality.

Size:  
Dial  $2\frac{3}{4}$ "      Height 5"  
Width 9"

# The Drake

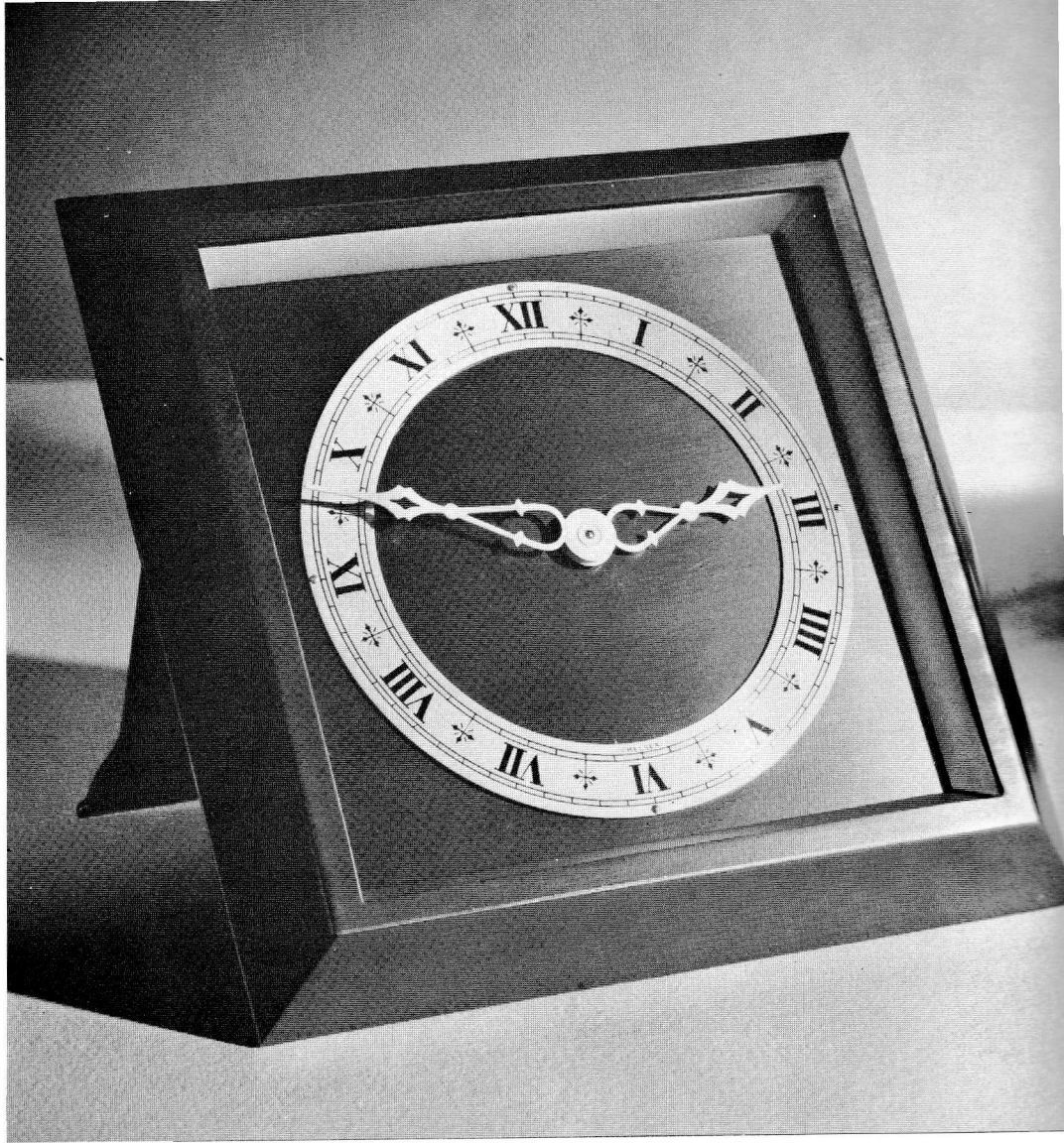
A Model of Chelsea craftsmanship. Solid cast bronze case with easel rest, finished in statuary bronze with Roman band dial.

Fitted with eight-day nonstriking jeweled lever movement with micrometer regulator and back wind and set.

This model can be furnished with self-starting synchronous electric movement if desired.

## *Size:*

Dial 6" (6 $\frac{3}{4}$ " square overall).



## *The Erickson and The Perry*

Both men and women appreciate the extreme simplicity of this easel-backed desk or table type of Clock-Barometer set.

It is extremely useful and most decorative.

Cased in a solid bronze case and finished in statuary bronze.

Features a Chelsea eight-day nonstriking jeweled lever movement of latest design, with micrometer regulator and back wind and set.

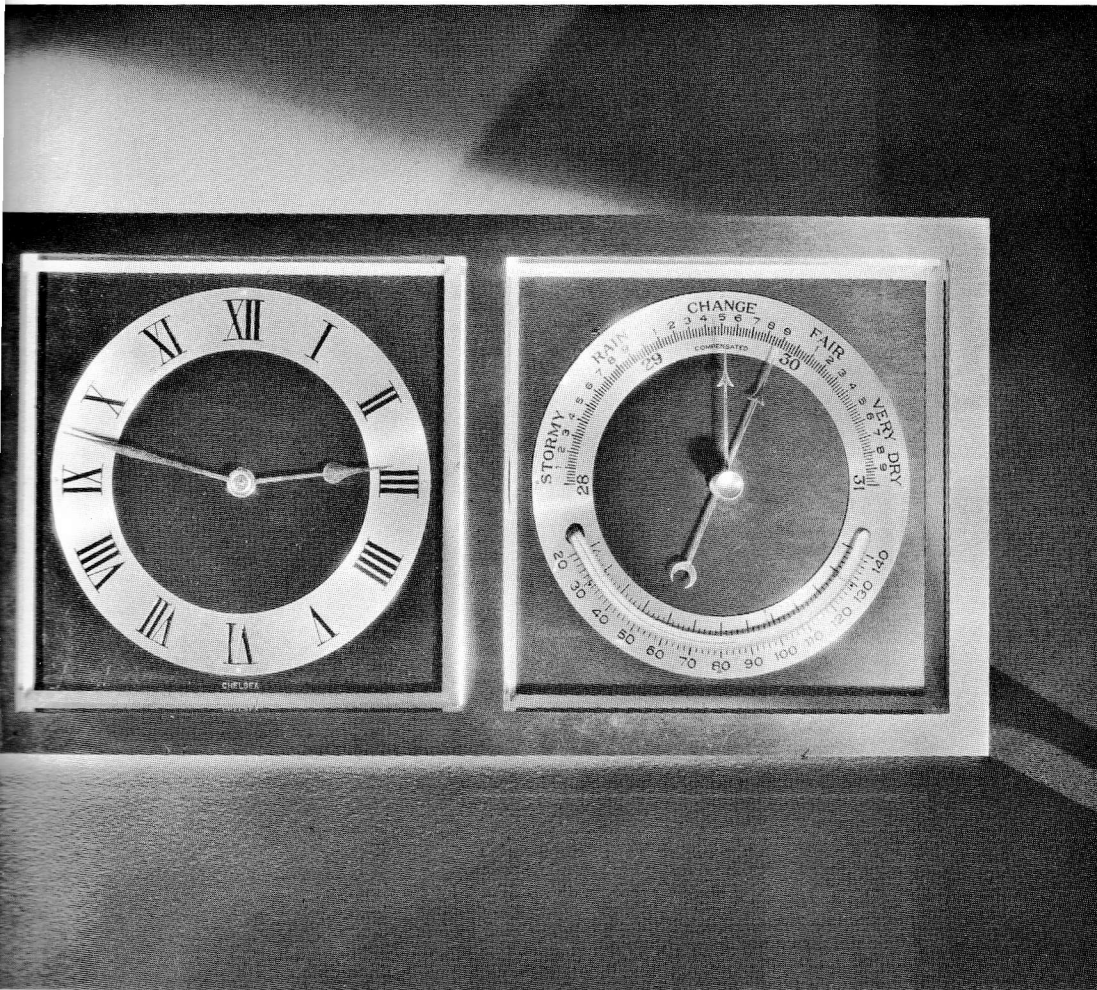
The Erickson model can be furnished with self-starting synchronous electric movement if desired.

### THE ERICKSON

Height 6"                      Width 11½"

### THE PERRY

Height 4"                      Width 7⅞"

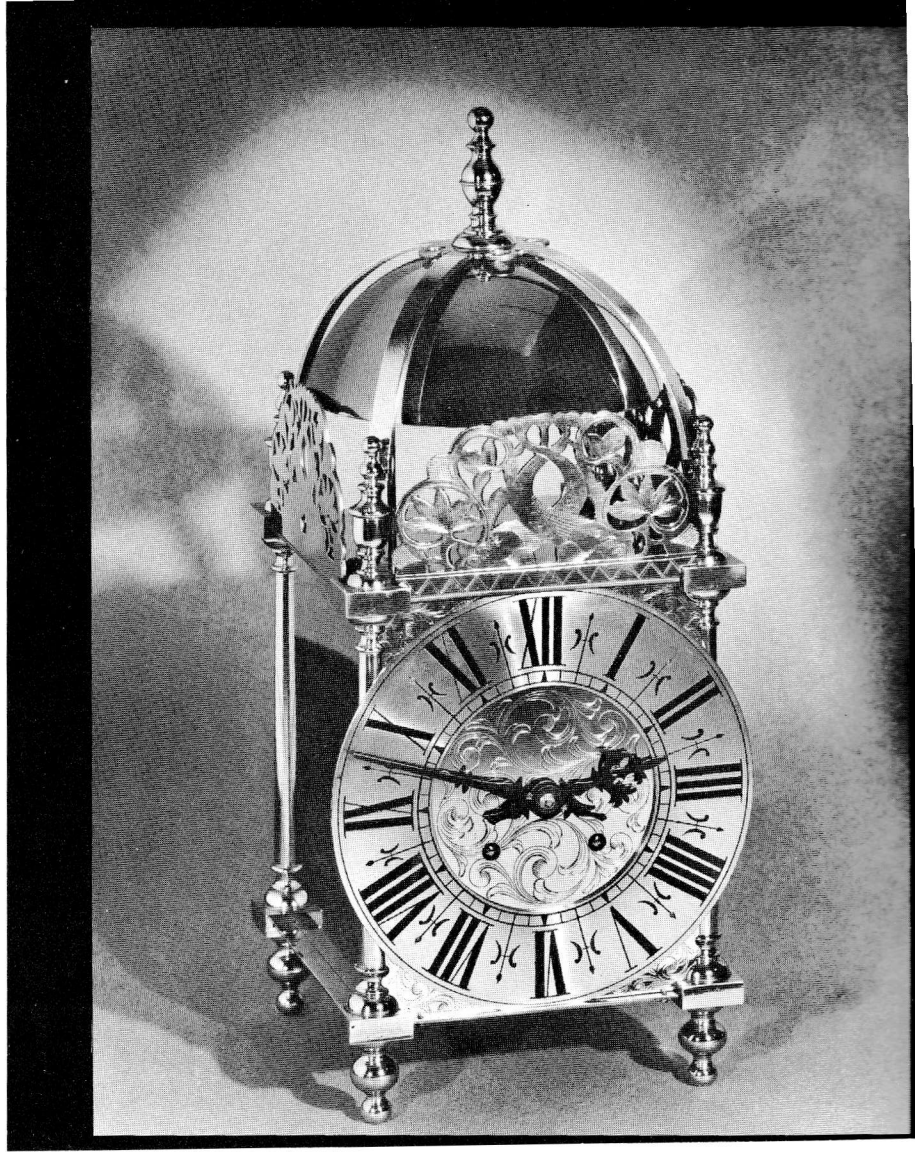


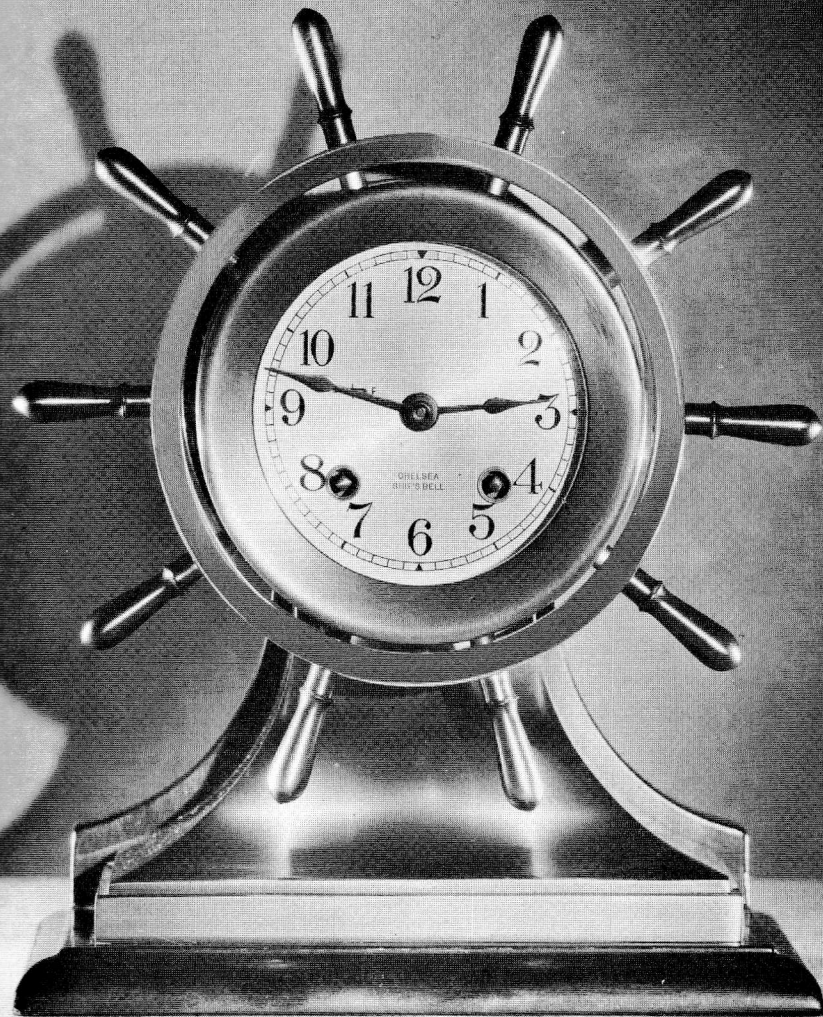


# *The Lantern*

A skillful reproduction of the 17th century English popular "bird cage" or "Cromwellian" clock. It is faithfully executed in sparkling brass in full or three-quarter sizes. Both have 8-day, 11-jeweled lever escapement hour and half-hour striking movements which strike on the exposed bell at the top of the case.

The full size model is 6" square at base, 14 $\frac{1}{2}$ " high to tip of center ornament, 6 $\frac{1}{4}$ " diameter dial. The three-quarter size model is 5 $\frac{1}{4}$ " square at base, 12" high to tip of center ornament, 5 $\frac{1}{4}$ " diameter dial.





## *The Mariner*

As nautical in appearance as its name implies, it is as sturdy and faithful as the men who go down to the sea in ships.

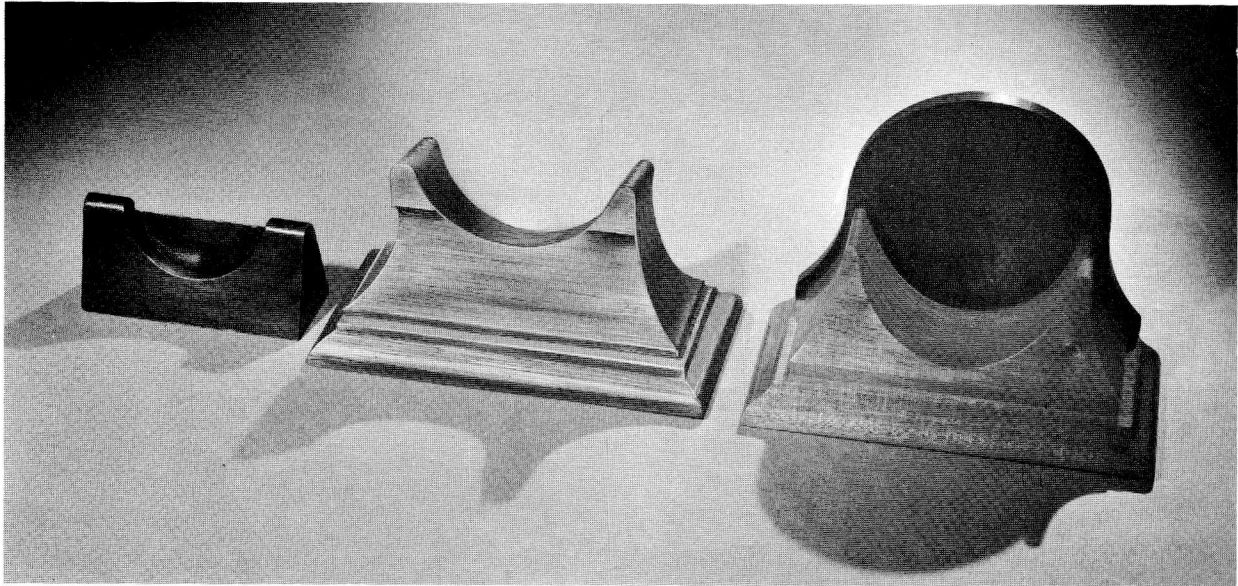
A resplendent Chelsea timepiece, the Mariner is an excellent choice for a mantel or desk clock. Cased in solid bronze, it is finished in statuary bronze and yellow brass and rests on a stand of solid mahogany. Equipped with the jeweled Chelsea eight-day lever movement with ship's bell strike.

<i>Dial</i>	<i>Height</i>	<i>Width</i>
3 $\frac{3}{4}$ "	10 $\frac{1}{2}$ "	8 $\frac{3}{4}$ "
4 $\frac{1}{2}$ "	13 $\frac{1}{2}$ "	11 $\frac{1}{2}$ "
6"	17 $\frac{1}{8}$ "	14 $\frac{1}{2}$ "

Barometers to match all of the above sizes are available.

## DISPLAY BASES

"Saddle-Type" wood bases, not requiring the use of fastening screws, available for display and functional use, for the models indicated. Particularly designed for the convenient use at home or office during the winter months of clocks or barometer removed from boats at end of season. All bases available only in reddish mahogany finish *except* on special firm order at extra cost.



### Manhattan and Viking

<i>Wide</i>	<i>High</i>	<i>Deep</i>
4 <sup>7</sup> / <sub>8</sub> "	2 <sup>1</sup> / <sub>8</sub> "	1 <sup>13</sup> / <sub>16</sub> "

### Pilot

<i>Dial</i>	<i>Wide</i>	<i>High</i>	<i>Deep</i>
3 <sup>3</sup> / <sub>4</sub> "	8 <sup>1</sup> / <sub>4</sub> "	4 <sup>3</sup> / <sub>8</sub> "	4 <sup>1</sup> / <sub>4</sub> "

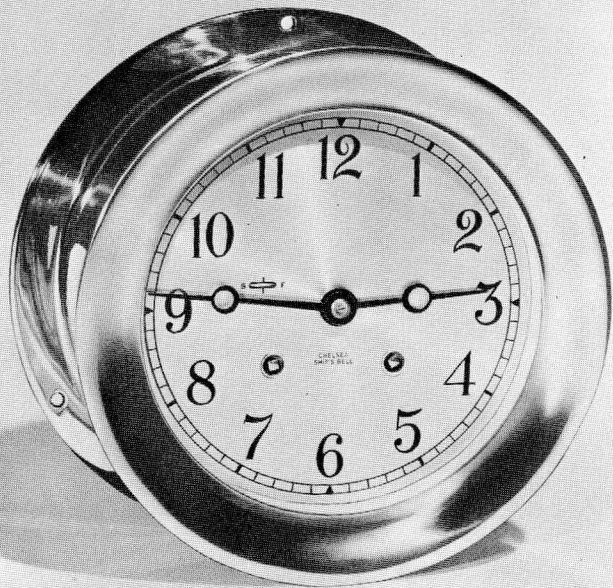
### Ship's Bell and Marine

<i>Dial</i>	<i>Wide</i>	<i>High</i>	<i>Deep</i>
3 <sup>3</sup> / <sub>4</sub> "	8 <sup>1</sup> / <sub>8</sub> "	6 <sup>1</sup> / <sub>4</sub> "	3 <sup>3</sup> / <sub>4</sub> "
4 <sup>1</sup> / <sub>2</sub> "	9 <sup>1</sup> / <sub>2</sub> "	7 <sup>1</sup> / <sub>2</sub> "	4"
6"	14"	9 <sup>3</sup> / <sub>8</sub> "	4 <sup>1</sup> / <sub>8</sub> "

# Timekeeper

## The SHIP'S

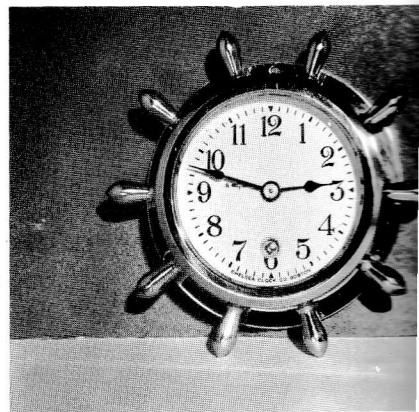
Telling time by Ship's Bell Code has a romantic background, having been used on shipboard the world over for hundreds of years. As the staccato notes of the ship's bell ring out, they tell the exact time. On land, too, it is popular and prized for its convenience as well as for its charm. A Chelsea Ship's Bell Clock is distinctive.



### SHIP'S BELL

A beautiful Chelsea leader. Designed for marine use, yet it can be attractively used in Hotels, Clubs, Lounges, and Game Rooms. In polished yellow brass, with eight-day jeweled lever movement, striking the prescribed ship's bell code.

Dial	Depth	Back Flange	Type Case	Dial	Depth	Back Flange	Type Case
3 $\frac{3}{4}$ "	3 $\frac{1}{2}$ "	4 $\frac{7}{8}$ "	Screw Bezel Hinge Bezel	6"	3 $\frac{3}{4}$ "	7 $\frac{5}{8}$ "	Screw Bezel Hinge Bezel
4 $\frac{1}{2}$ "	3 $\frac{1}{2}$ "	5 $\frac{3}{4}$ "	Screw Bezel Hinge Bezel	8 $\frac{1}{2}$ "	3 $\frac{3}{4}$ "	10 $\frac{5}{8}$ "	Hinge Bezel



### MAN

The answer to the time and weather problems of panel or removed for home use. Chelsea eight-day strike. Fitted with micrometer regulator for close barometer with thermometer. In solid brass, p Dial — 2 $\frac{3}{4}$ ". Depth — 1 $\frac{1}{2}$ ". Diameter to VIKING — not pictured. Is same as Man

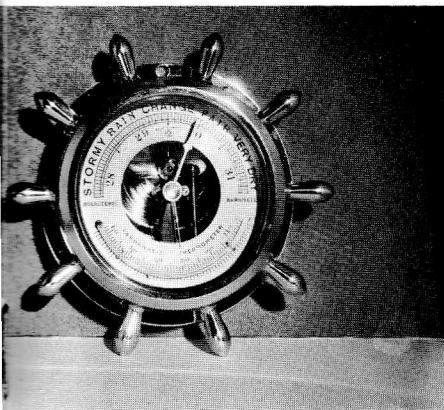


# of the Sea

## BELL CODE

8 Bells	4:00	8:00	12:00
1 Bell	4:30	8:30	12:30
2 Bells	5:00	9:00	1:00
3 Bells	5:30	9:30	1:30
4 Bells	6:00	10:00	2:00
5 Bells	6:30	10:30	2:30
6 Bells	7:00	11:00	3:00
7 Bells	7:30	11:30	3:30

Hours are even numbers and half hours are odd numbers.  
Inexpensive Display Bases available for all models shown  
—See Page 13.



## ATTAN

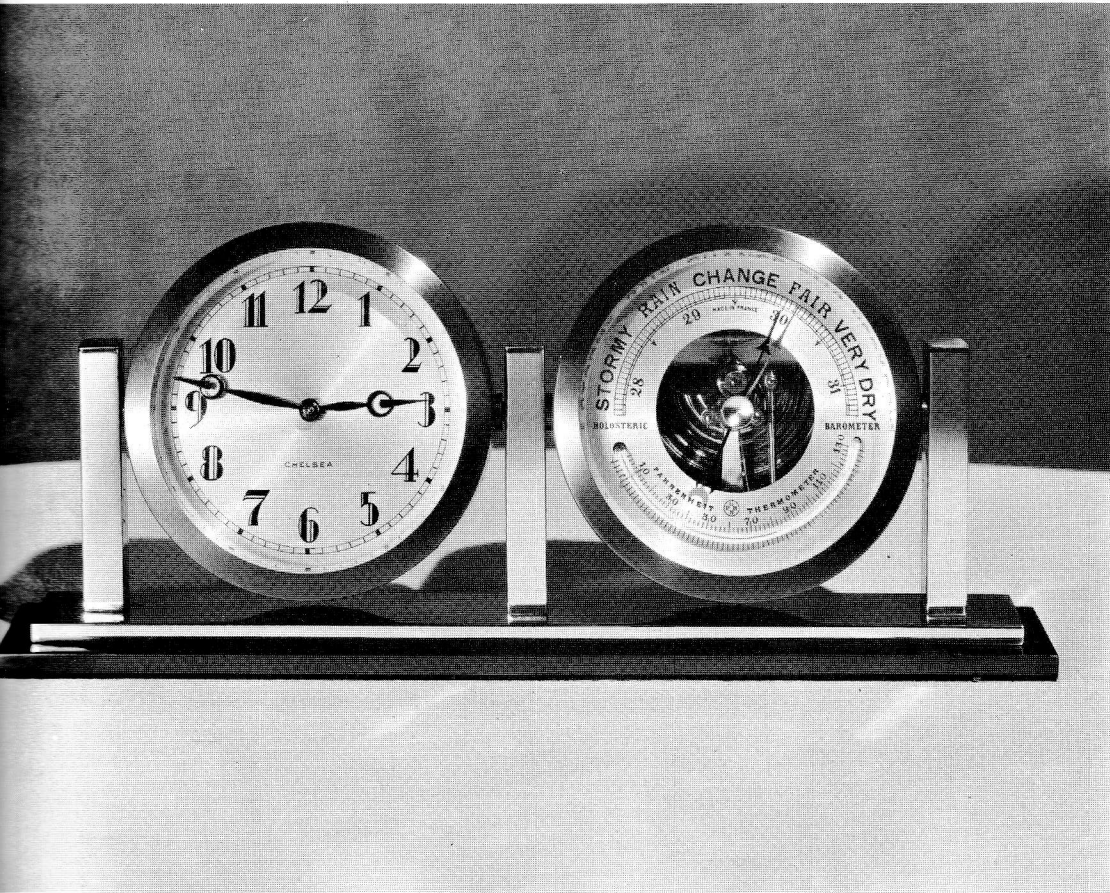
Every yachtsman. Easily installed on the instrument panel. Jewel lever movement of latest design without need for accurate adjustment of timekeeping rates. Aneroid movement with polished finish, with screw bezel weather-tight cases. Available in 4 $\frac{3}{4}$ " diameter except without wheel handles.



## MATCHING BAROMETER

These Holosteric Barometers with reliable Fahrenheit Thermometers are made according to the same precision standards that characterize Chelsea clocks. They are carefully tested and will give dependable service year after year. Cased in solid brass, screw bezel, polished finish to match depth of either Ship's Bell or nonstriking Marine or Timemaster models.

Round — Dial	Back Flange	Pilot —	Dial	Diam. inc. handles
3 $\frac{3}{4}$ "	4 $\frac{7}{8}$ "		3 $\frac{3}{4}$ "	8 $\frac{3}{4}$ "
4 $\frac{1}{2}$ "	5 $\frac{3}{4}$ "		4 $\frac{1}{2}$ "	11 $\frac{1}{2}$ "
6"	7 $\frac{5}{8}$ "		6"	14 $\frac{1}{2}$ "



# *The Nautilus*

The Chelsea Nautilus Model is a strikingly beautiful combination clock-barometer set built to modern design.

Cased in solid bronze, it is finished with Statuary Bronze case and sub-base, with polished yellow brass posts and mahogany base.

With back wind and set Chelsea eight-day nonstriking jeweled lever movement. Exquisite quality and precision workmanship. Has micrometer regulation for close, accurate timekeeping.

*Size:*

Dial 2 $\frac{3}{4}$ "

Height 4"

Width 9"

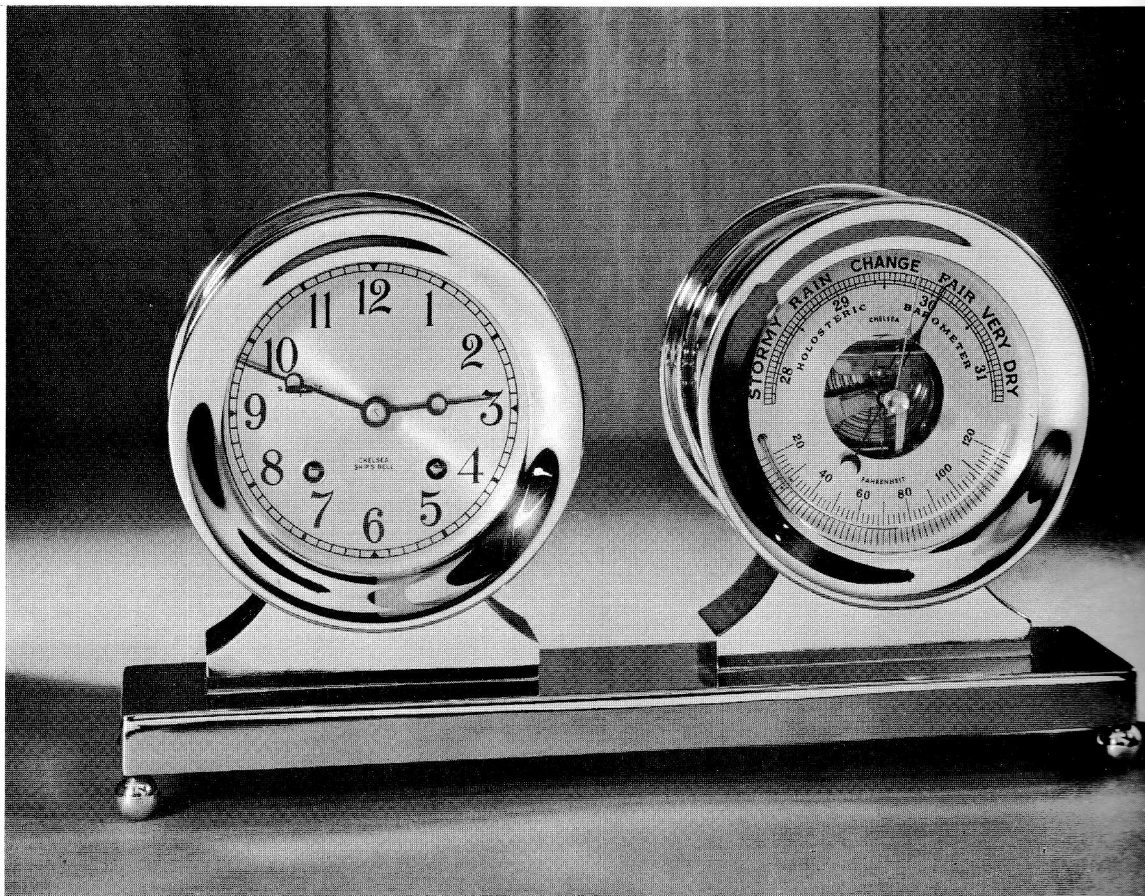


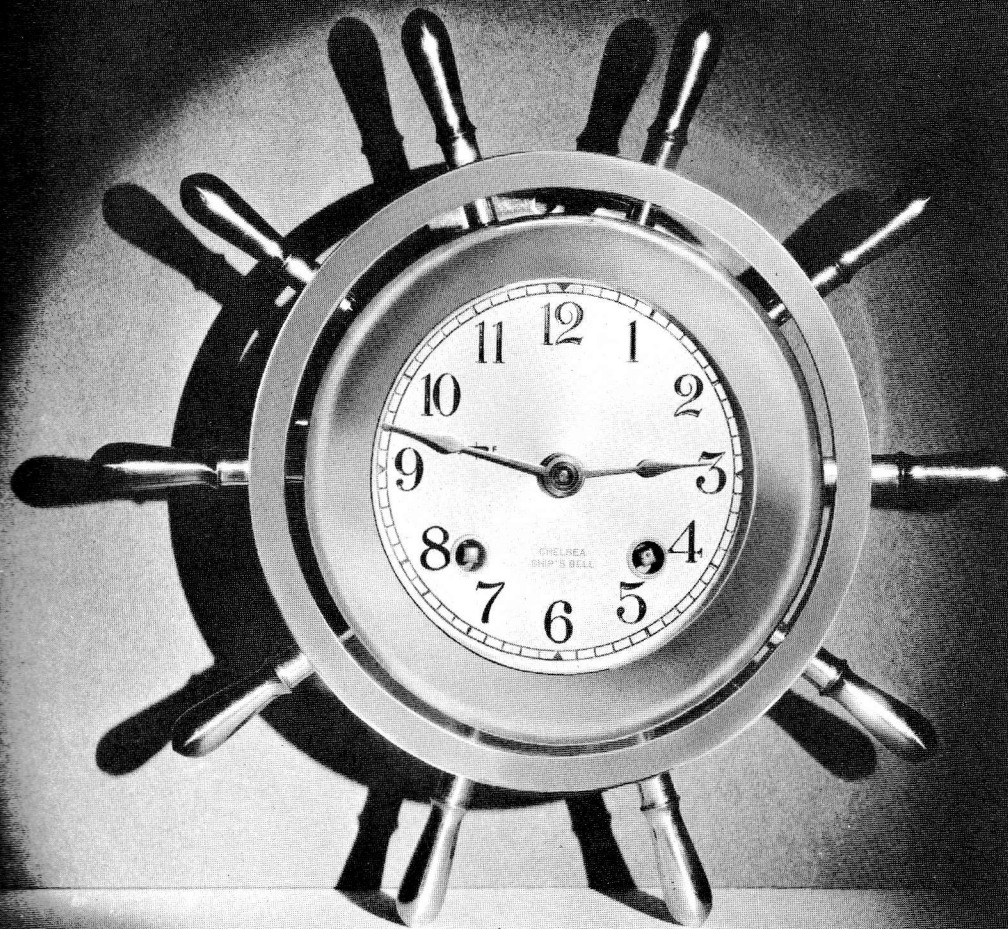
# Ocean Pride

A beautiful combination clock and barometer set of simple yet rich design. The solid bronze base is ideal for a hand-engraved inscription.

The unit is finished in an attractive combination of statuary bronze and polished yellow brass. The clock has an 8-Day, 11-Jeweled lever movement striking ship's time on the hour and half hour. Aneroid barometer and Fahrenheit thermometer are of first quality and workmanship.

<i>Dial</i>	<i>Height</i>	<i>Width</i>
3 $\frac{3}{4}$ "	7"	12 $\frac{1}{4}$ "
4 $\frac{1}{2}$ "	8"	14"





## *The Pilot*

A beautiful ship's wheel design in a wall clock for home, cabin, office or clubroom. It is a classic example of Chelsea's famed "Timekeepers of the Sea" in solid bronze; a combination of polished yellow brass case and handles with statuary bronze ring.

Contains the Chelsea eight-day jeweled lever movement with ship's bell strike.

Dial,  $3\frac{3}{4}$ " diameter, including handles,  $8\frac{3}{4}$ ". Screw bezel.

Dial,  $4\frac{1}{2}$ " diameter, including handles,  $11\frac{1}{2}$ ". Hinge bezel.

Dial, 6" diameter, including handles,  $14\frac{1}{2}$ ". Hinge bezel.

Pilot Barometers to exactly match all sizes of Pilot Clocks are available.

Inexpensive Display Base available for  $3\frac{3}{4}$ " size. See page 13.

# The Shelton

A substantial semi-modern styled clock; an ideal piece for mantel or bookcase use.

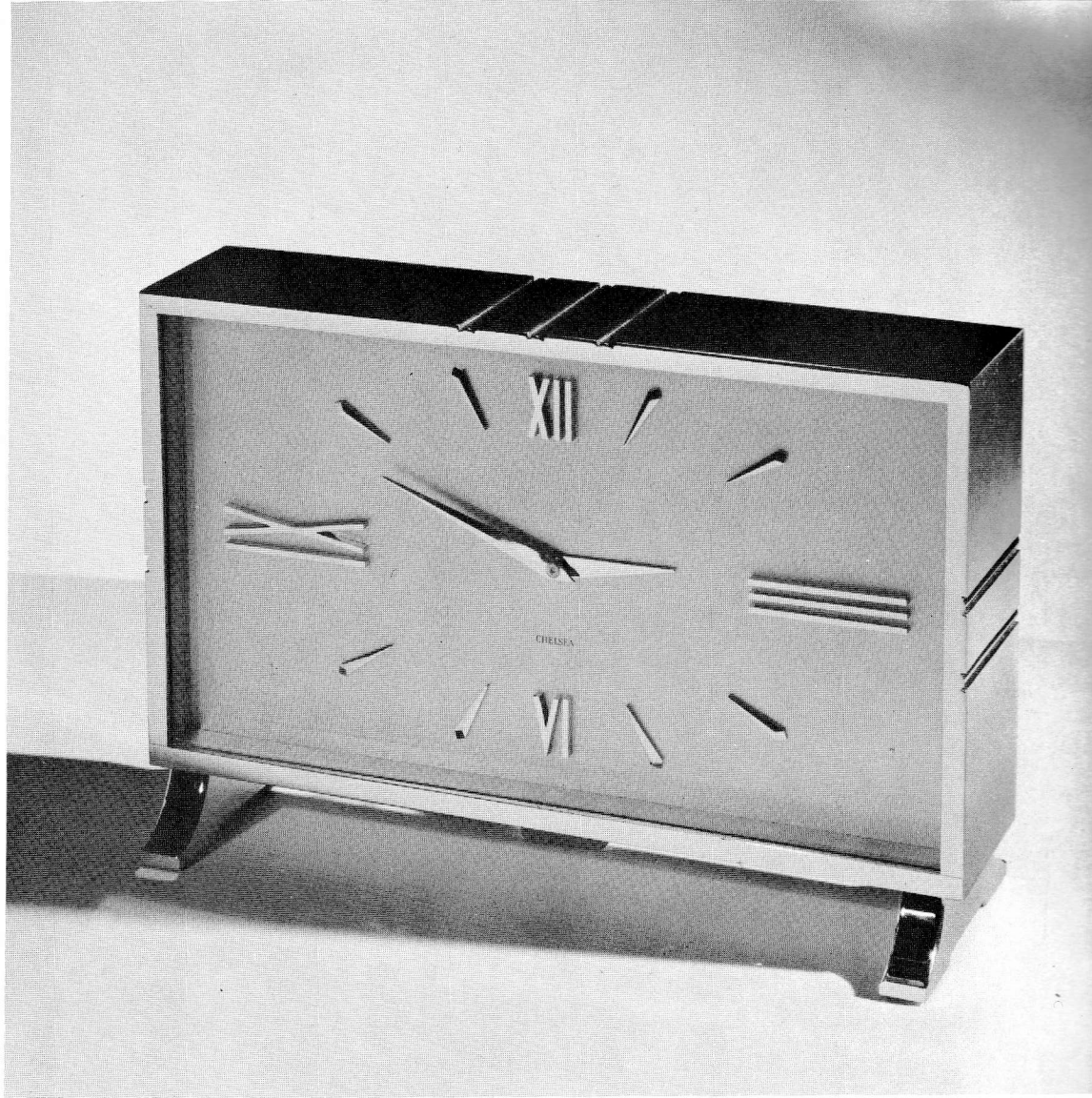
Case is of solid brass beautifully finished in a combination of brush and polished, heavy, bright gold.

Clock movement is of 8-Day, 11-Jeweled back wind nonstriking type, fitted with micrometer regulator to assure accurate timekeeping.

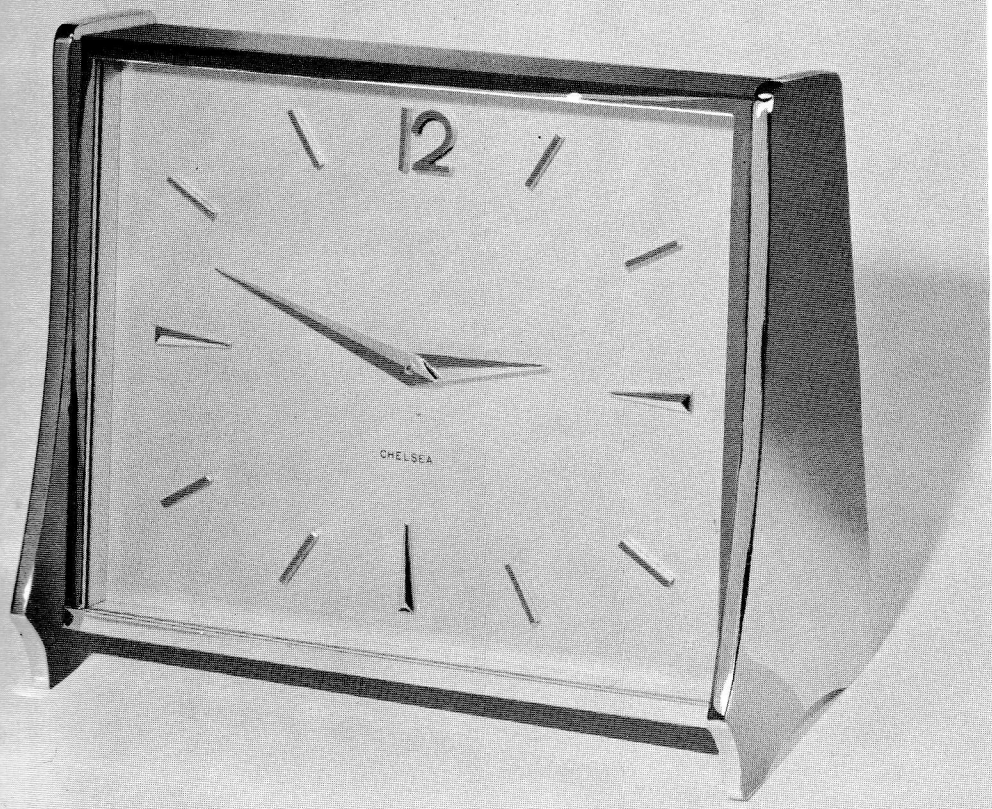
The beauty, superb quality, and precision workmanship of this attractive clock makes it most desirable.

*Size:*

Height, 5 $\frac{3}{4}$ "; Width, 8 $\frac{3}{4}$ ".







## *The Socialite*

A unique contemporary design suitable for home living quarters.

Case is gold plated on solid brass. Five minute markers of bright gold on satin silver background.

Clock movement is 8-day, 11 jewel, back wind, non-striking type, fitted with micrometer regulator to assure accurate timekeeping.

### *Size*

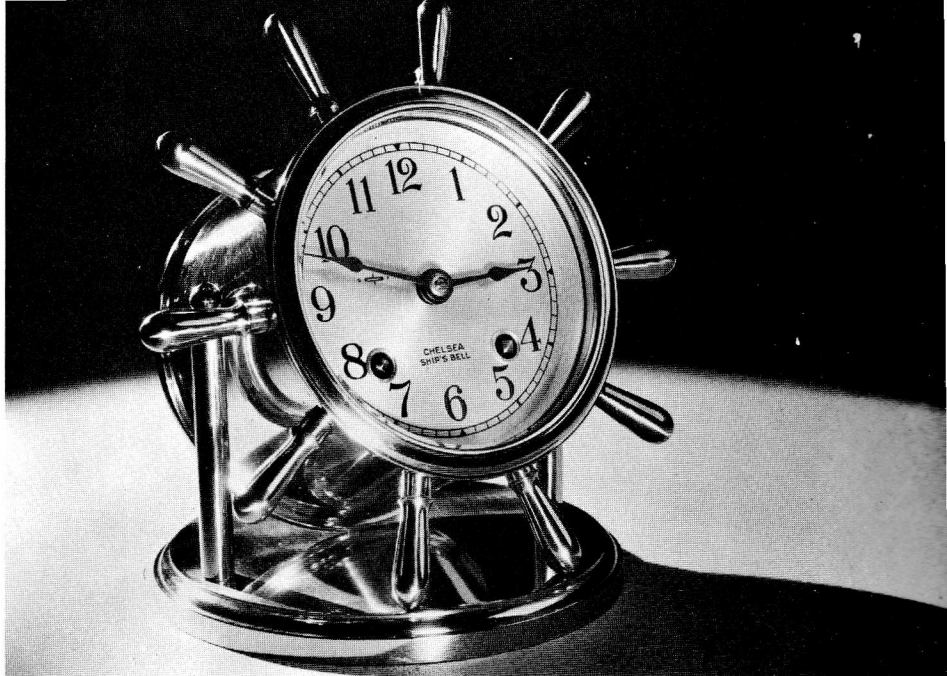
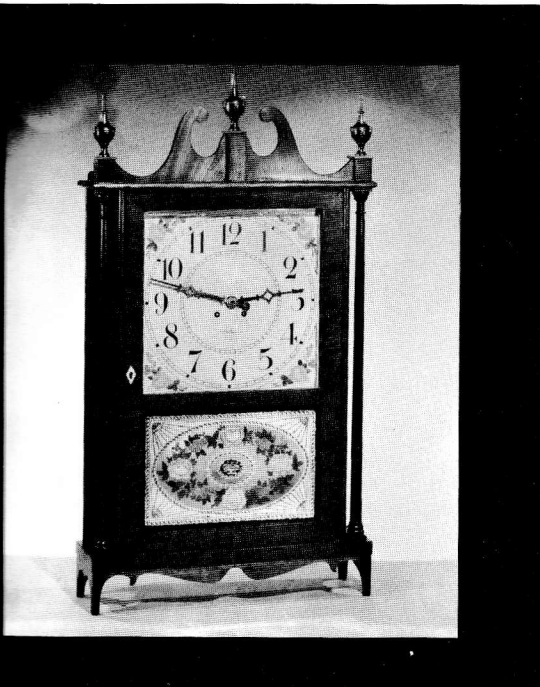
Height  $4\frac{5}{8}$ "; Width  $5\frac{1}{2}$ ".

# The Terry

American shelf clocks of this type were first made early in the 19th century. The Terry has a mahogany case with hand painted dial and panel. Chelsea eight-day jeweled lever movement with hour and half-hour strike.

*Finish:* Hand-rubbed mahogany. Brass trim. *Three-quarter size—*

*Dial* 10"; *Height to tip of center ornament* 24 $\frac{3}{4}$ "; *Width* 13 $\frac{1}{2}$ "; *Depth* 5".



# The Vanderbilt

A Salty Sea Model, with its ship's wheel design, the Chelsea Vanderbilt is a popular nautical timepiece with a strong appeal alike to the seafarer and the week-end sportsman.

Solid cast bronze, beautifully finished in statuary bronze, with yellow polished brass handles. The Vanderbilt is a compact striking ship's bell clock particularly designed and suited for desk use — a welcome addition to your home or office. Eight-day jeweled lever movement of outstanding Chelsea design.

The Vanderbilt may be had fitted with fine quality barometer to exactly match the clock.

*Size:* Dial, 3 $\frac{3}{4}$ "; *Height*, 7 $\frac{1}{4}$ "; *Width*, 6 $\frac{3}{4}$ ".



## *The Verna*

Designed for the space age with the traditional fine Chelsea precision movement inside, this up-to-date model is particularly suited for the modern home or office.

Famous Chelsea 8-day, 11-jewel, nonstriking lever movement with micrometer regulator for accurate timekeeping. Gold plated solid brass case.

*Size:*

Length  $5\frac{5}{8}$ "

Height  $3\frac{1}{4}$ "



# The Willard Banjo

The Chelsea Willard Banjo is an excellent reproduction of an original Simon Willard Banjo clock.

It is constructed of solid mahogany with hand-rubbed finish and polished brass trim.

It is equipped with jeweled lever eight-day movements having a micrometer regulator permitting accurate adjustment.

The door panels are hand-painted in oil colors and two subjects are available for choice:

## MOUNT VERNON CONSTITUTION-GUERRIERE

### NONSTRIKING WILLARD

Size	Dial	Height
3/4"	6"	32"

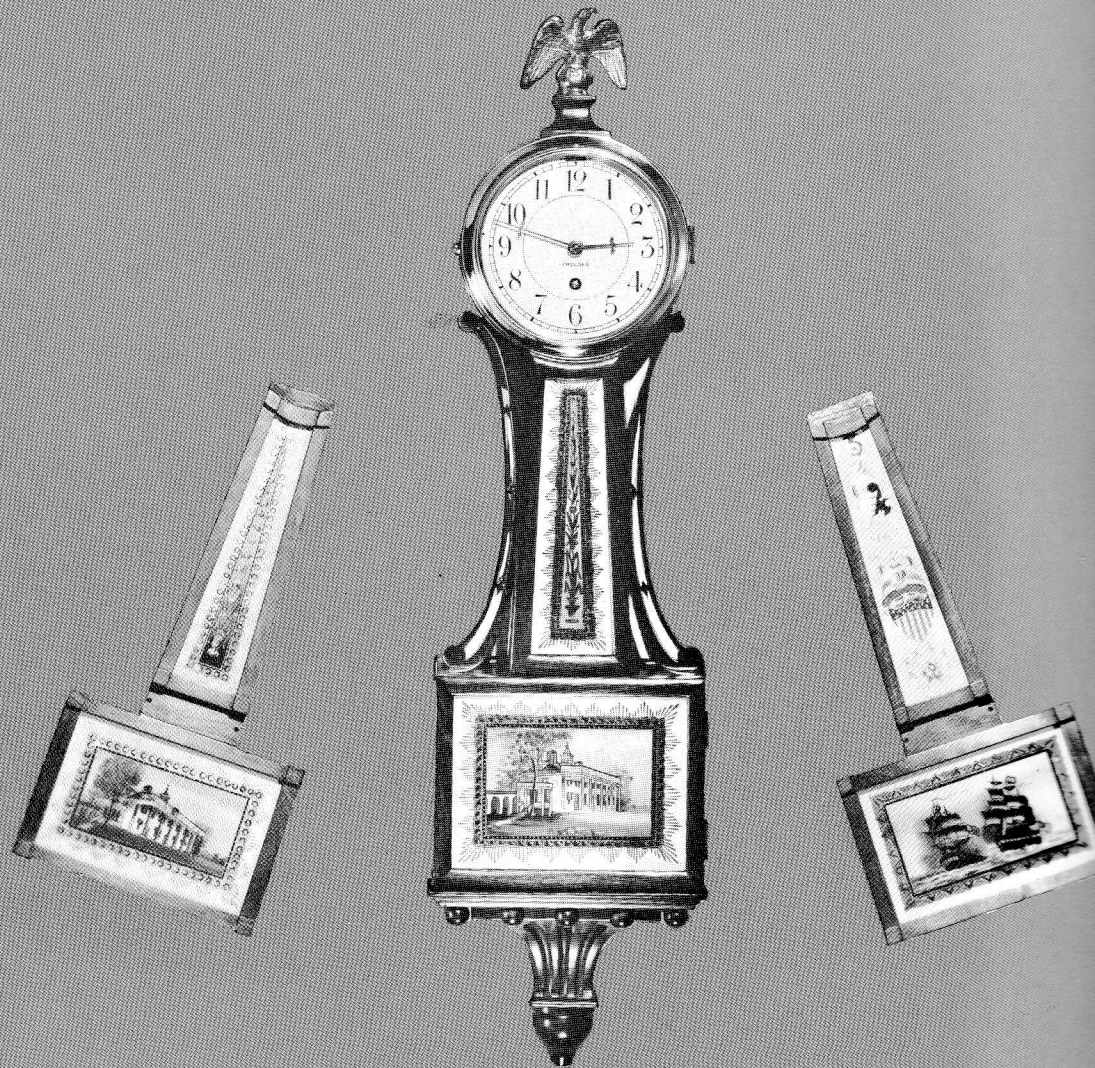
(Inc. Eagle)

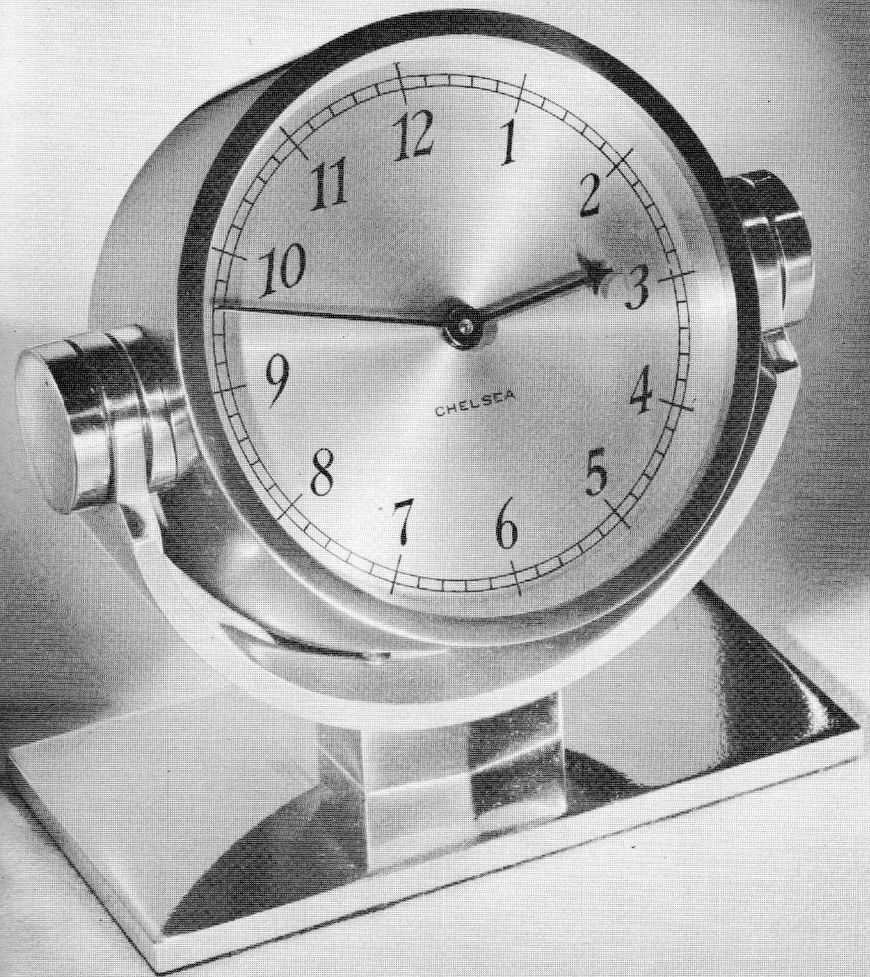
### SHIP'S BELL STRIKING WILLARD

Size	Dial	Height
3/4"	6"	32"

### HOUR AND HALF HOUR STRIKE WILLARD

Size	Dial	Height
3/4"	6"	32"





## *The Winston*

A hallmark of gracious contemporary design combined with a special crisp touch . . . for desk, office or home. The sturdy brass case and pedestal in rich overtones are meticulously crafted to complement masculine settings.

A graceful suspension cradle tempts the user to tilt the case to its most convenient reading angle. Behind the handsome silvered face is our latest design 8-day, 11-jeweled, non-striking movement. Micrometer regulated movement for precise and positive timekeeping by this new model.

*Size:*

Dial  $3\frac{1}{16}$ "

Height  $4\frac{7}{8}$ "

Width  $4\frac{7}{8}$ "

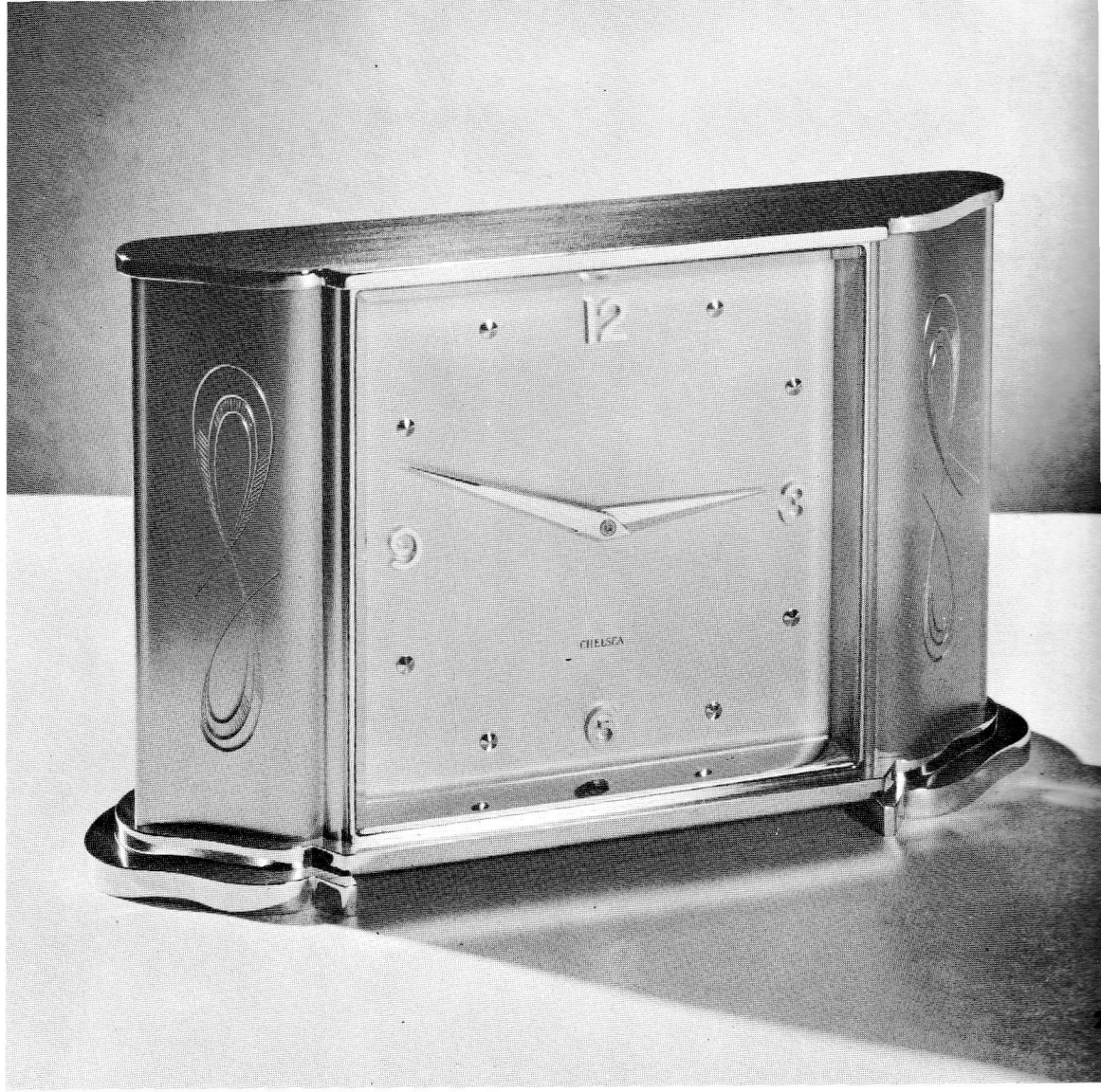
# *The Wisteria*

The subtle blend of modern simplicity and traditional elegance, this model is also gold plated on solid brass case, with hand engraved design. Numerals, dots and hands are bright gold on silver dial background. Chelsea 8-day, 11-jewel, nonstriking lever movement with micrometer regulator for accurate timekeeping.

*Size:*

Length 8"

Height 5½"







## *The Wythe House*

Williamsburg Restoration has approved this clock made under its supervision and special license by the best manufactory exclusively by CHELSEA.

George Wythe (1726-1806), a great patriot and scholar of the American Revolution, was one of the most influential Americans of his era, a Virginia signer of The Declaration of Independence, and North America's first College Professor of Law (at the College of William and Mary). He was a teacher and dear friend of Thomas Jefferson and an inspiration to many other brilliant young minds of his time. He served in important positions in the Government of Virginia before and after the Revolution, and was instrumental in the formation of the Federal Government after Independence.

The George Wythe House has passed through many owners but in 1938 was acquired by Colonial Williamsburg and restored with great care.

The Wythe House Clock is an authentic reproduction of a late

18th Century English Clock on exhibit in the historic Wythe House in Williamsburg, Virginia. The hand-rubbed dark Mahogany cabinet is enriched with a genuine Hollywood and inlaid design. The feet, sash and top handle are solid brass. The white metal dial is  $3\frac{7}{8}$ " in diameter and the full height of the clock (with handle extended) is  $10\frac{1}{2}$ ". Dimensions over feet  $7\frac{1}{2}$ " wide and 4" deep. Both the key wind and the electric models have modern mechanisms of finest quality to assure long and accurate service.

The key wind model is fitted with 8-day, 11-jeweled, Lever Escapement nonstriking movement and the electric model has a Chelsea VE "Electronometer" synchronous self-starting movement for operation on regulated 110 Volt, 60 Cycle Alternating Current.

The Chelsea Clock Company is proud to have been appointed by Williamsburg Restoration Incorporated as the only Company authorized to reproduce the old and charming Wythe House Clock. As a consequence of the exacting requirements of the RESTORATION and the consistent high standard maintained by Chelsea, this clock is offered as an outstanding achievement of combined quality, tradition, and beauty.



## *Barometers*

are available in many case designs as indicated throughout the catalog — as well as in the plain round solid brass case illustrated. They are made to the same precision standards that characterize Chelsea Clocks and will give dependable service year after year.

Illustration shows our  $3\frac{3}{4}$ " dial size round Barometer to match Ship's Bell Clock, mounted on separate Mahogany Base as described on Page 15.

**CHELSEA CLOCK COMPANY**

**284 EVERETT AVENUE**

**CHELSEA 50, MASS.**