

" BARIGO " SHIPS CLOCKS/BAROMETERS

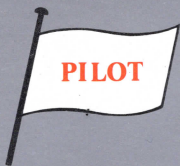
RAUTEC PTY. LTD.

P.O. BOX 25, MT. WAVERLEY
VICTORIA, AUST. 3149

Schiffsbarometer
Schiffsuhren
Ship's Barometers
Ship's Clocks

Katalog
1979/80





713



717



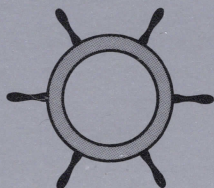
718



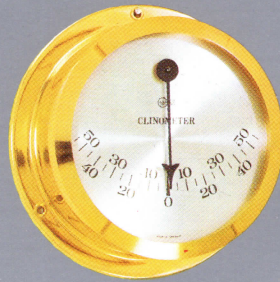
719



720

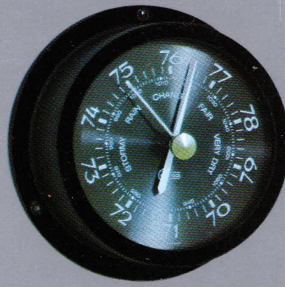


Mit Speichen lieferbar
Available with spokes
ø 115 mm

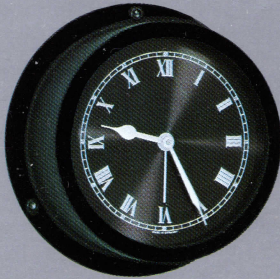


721

No.	Instrument	Skala · Dial mm ø in ø		Gehäuse · Case mm ø in ø		Beschreibung · Description
713	Barometer	70	2¾	88 × 35	3½ × 1¾	MESSING BRASS · LAITON Chrom - Chrome Skalen Fischsilber Dials silver-white
717	Uhr, Clock · QUARTZ	70	2¾	88 × 35	3½ × 1¾	
718	Hygrometer	70	2¾	88 × 35	3½ × 1¾	
719	Thermometer	70	2¾	88 × 35	3½ × 1¾	
720	Thermo/Hygrometer	70	2¾	88 × 35	3½ × 1¾	
721	Clinometer	70	2¾	88 × 35	3½ × 1¾	



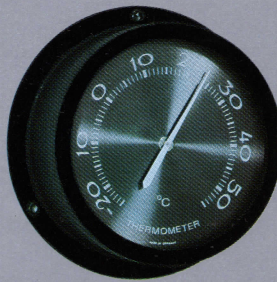
723



727

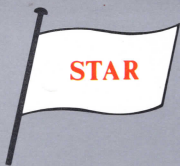


728



729

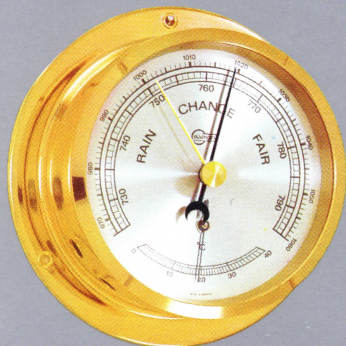
No.	Instrument	Skala · Dial		Gehäuse · Case		Beschreibung · Description
		mm ϕ	in ϕ	mm ϕ	in ϕ	
723	Barometer	70	2 3/4	88 × 35	3 1/2 × 1 3/8	MESSING BRASS · LAITON schwarzverchromt matt matt-black chrome finish
727	Uhr, Clock · QUARTZ	70	2 3/4	88 × 35	3 1/2 × 1 3/8	
728	Hygrometer	70	2 3/4	88 × 35	3 1/2 × 1 3/8	
729	Thermometer	70	2 3/4	88 × 35	3 1/2 × 1 3/8	



1184



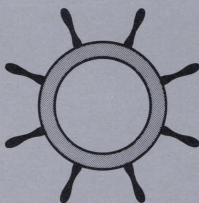
1185



1186



1187



Mit Speichen lieferbar
Available with spokes
ø 140 mm

No.	Instrument	Skala · Dial mm ø	Dial in ø	Gehäuse · Case mm ø	Case in ø	Beschreibung · Description
1184	QUARTZ-Alarm	85	3 3/8	110 × 45	4 3/8 × 1 1/4	MESSING BRASS · LAITON Chrom - Chrome Skalen Fischsilber Dials silver-white
1185	Barometer	85	3 3/8	110 × 45	4 3/8 × 1 1/4	
1186	Baro/Thermometer	85	3 3/8	110 × 45	4 3/8 × 1 1/4	
1187	Uhr, Clock · QUARTZ	85	3 3/8	110 × 45	4 3/8 × 1 1/4	

STAR



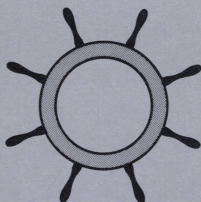
1188



1189



1191

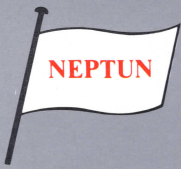


Mit Speichen lieferbar
Available with spokes
ø 140 mm



1190

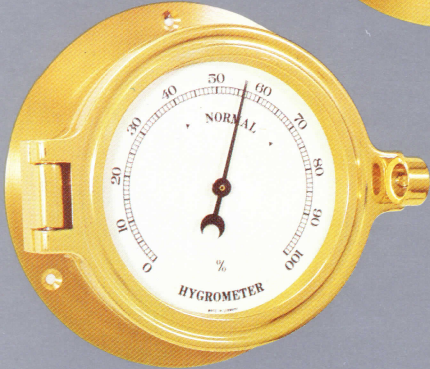
No.	Instrument	Skala · Dial		Gehäuse · Case		Beschreibung · Description
		mm ø	in ø	mm ø	in ø	
1188	Hygrometer	85	3 3/8	110 × 45	4 3/8 × 1 3/4	MESSING BRASS · LAITON Chrom - Chrome Skalen Fischsilber Dials silver-white
1189	Thermometer	85	3 3/8	110 × 45	4 3/8 × 1 3/4	
1191	Clinometer	85	3 3/8	110 × 45	4 3/8 × 1 3/4	
1190	Thermo/Hygrometer	85	3 3/8	110 × 45	4 3/8 × 1 3/4	



1385



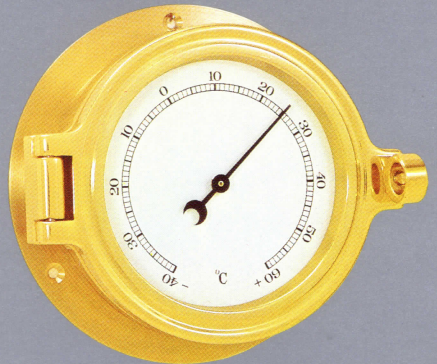
1387



1388



1390



1389

No.	Instrument	Skala · Dial mm ø	Dial in ø	Gehäuse · Case mm ø	Case in ø	Beschreibung · Description
1385	Barometer	85	3 3/8	120 × 45	4 3/4 × 1 3/4	MESSING BRASS · LAITON Besonders schwere Ausführung Solid, heavy brass case Skalen Fischesilber Dials silver-white
1387	Uhr, Clock · QUARTZ	85	3 3/8	120 × 45	4 3/4 × 1 3/4	
1388	Hygrometer	85	3 3/8	120 × 45	4 3/4 × 1 3/4	
1389	Thermometer	85	3 3/8	120 × 45	4 3/4 × 1 3/4	
1390	Thermo/Hygrometer	85	3 3/8	120 × 45	4 3/4 × 1 3/4	



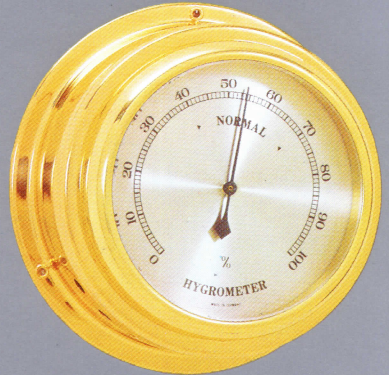
2185



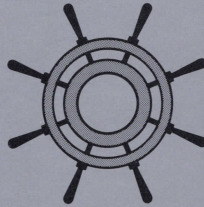
2186



2187
2187/8

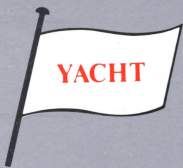


2188
2189



Mit Speichen lieferbar
Available with spokes
ø 180 mm

No.	Instrument	Skala · Dial		Gehäuse · Case		Beschreibung · Description
		mm ø	in ø	mm ø	in ø	
2185	Barometer	90	3 1/2	135 × 55	5 1/4 × 2 1/4	MESSING BRASS · LAITON Chrom - Chrome Skalen Fischsilber Dials silver-white
2186	Baro/Thermometer	90	3 1/2	135 × 55	5 1/4 × 2 1/4	
2187	Uhr, Clock · QUARTZ	90	3 1/2	135 × 55	5 1/4 × 2 1/4	
2187/8	Uhr, Clock · 8-Tag, 8 day	90	3 1/2	135 × 55	5 1/4 × 2 1/4	
2188	Hygrometer	90	3 1/2	135 × 55	5 1/4 × 2 1/4	
2189	Thermometer	90	3 1/2	135 × 55	5 1/4 × 2 1/4	



612
612/70



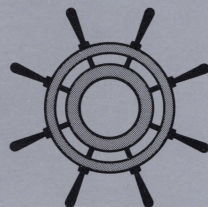
613
613/70



616



2350

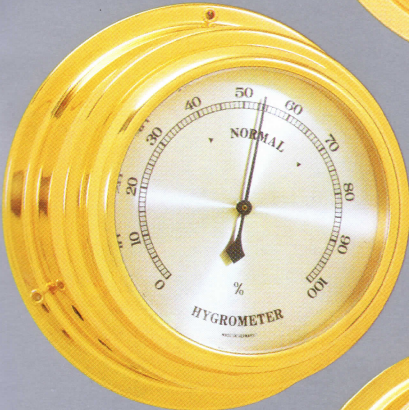


Mit Speichen lieferbar
Available with spokes
ø 210 mm

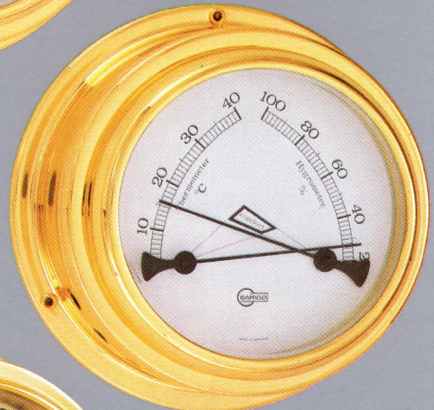
No.	Instrument	Skala · Dial		Gehäuse · Case		Beschreibung · Description
		mm ø	in ø	mm ø	in ø	
612	Baro/Thermometer	100	4	150 × 60	6 × 2 3/8	MESSING BRASS · LAITON Chrom - Chrome Skalen Fischsilber Dials silver-white
612/70	Baro/Thermometer	100	4	150 × 70	6 × 2 3/4	
613	Barometer	100	4	150 × 60	6 × 2 3/8	MESSING BRASS · LAITON Chrom - Chrome Skalen Fischsilber Dials silver-white
613/70	Barometer	100	4	150 × 70	6 × 2 3/4	
616	Uhr, Clock · 8-Tag, 8 day	100	4	150 × 60	6 × 2 3/8	
2350	Uhr, Clock · QUARTZ	100	4	150 × 60	6 × 2 3/8	



617

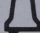


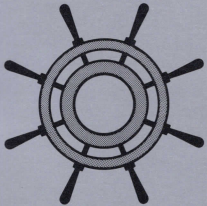
618
619



620



2441/70 



Mit Speichen lieferbar
Available with spokes
ø 210 mm

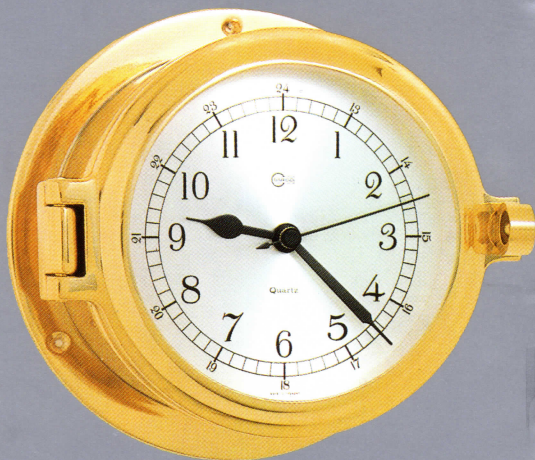
No.	Instrument	Skala · Dial mm ø	Dial in ø	Gehäuse · Case mm ø	Case in ø	Beschreibung · Description
617	Uhr, Clock · QUARTZ TIME & TIDE	100	4	150 × 60	6 × 2 3/8	MESSING BRASS · LAITON Chrom - Chrome Skalen Fischsilber Dials silver-white
618	Hygrometer	100	4	150 × 60	6 × 2 3/8	
619	Thermometer	100	4	150 × 60	6 × 2 3/8	
620	Thermo/Hygrometer	100	4	150 × 60	6 × 2 3/8	
2441/70	Uhr, Clock · 8-Tag, 8 day Glasenschlag, Ship's Bell	100	4	150 × 70	6 × 2 3/4	



1485

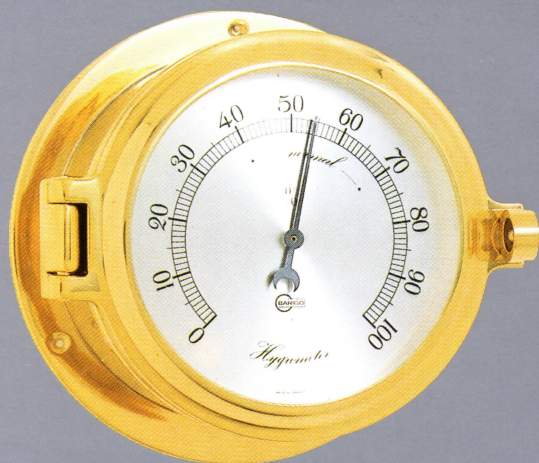


1486

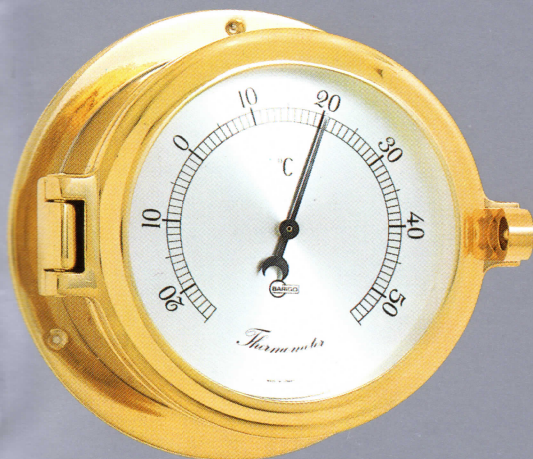


1487

No.	Instrument	Skala · Dial mm ø in ø		Gehäuse · Case mm ø in ø		Beschreibung · Description
1485	Barometer	100	4	140 × 80	5 3/4 × 3 1/8	MESSING BRASS · LAITON Besonders schwere Ausführung Solid, heavy brass case Skalen Ms versilbert Dials brass, silver plated
1486	Baro/Thermometer	100	4	140 × 80	5 3/4 × 3 1/8	
1487	Uhr, Clock · QUARTZ	100	4	140 × 80	5 3/4 × 3 1/8	

1488



1489



1491



1492

No.	Instrument	Skala · Dial		Gehäuse · Case		Beschreibung · Description
		mm ϕ	in ϕ	mm ϕ	in ϕ	
1488	Hygrometer	100	4	140 × 80	5 3/4 × 3 1/8	MESSING BRASS · LAITON
1489	Thermometer	100	4	140 × 80	5 3/4 × 3 1/8	
1491	Uhr, Clock · 8-Tag, 8 day Glasenschlag, Ship's Bell	100	4	140 × 80	5 3/4 × 3 1/8	Besonders schwere Ausführung Solid, heavy brass case
		100	4	140 × 80	5 3/4 × 3 1/8	
1492	Uhr, Clock · QUARTZ Glasenschlag, Ship's Bell	100	4	140 × 90	5 3/4 × 3 1/2	Skalen Ms versilbert Dials brass, silver plated



1524

TWIN DIAPHRAGM
DOPPELDOSE



1570
1576

1571 

No.	Instrument	Skala · Dial		Gehäuse · Case		Beschreibung · Description
		mm \varnothing	in \varnothing	mm \varnothing	in \varnothing	
1524	Barometer	125	5	180 × 70	7 × 2 3/4	MESSING BRASS · LAITON Skalen Ms versilbert Dials brass, silver plated
1570	Uhr, Clock · QUARTZ	125	5	180 × 70	7 × 2 3/4	
1571	Uhr, Clock · 8-Tag, 8 day Glasenschlag, Ship's Bell	125	5	180 × 70	7 × 2 3/4	
1576	Uhr, Clock · 8-Tag, 8 day	125	5	180 × 70	7 × 2 3/4	



1523



1528



1560

1566

1561

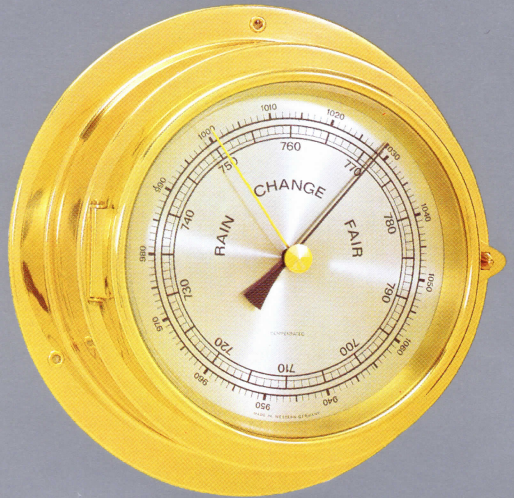


1529

No.	Instrument	Skala · Dial		Gehäuse · Case		Beschreibung · Description
		mm ø	in ø	mm ø	in ø	
1523	Barometer	125	5	180 × 70	7 × 2 3/4	MESSING BRASS · LAITON Skalen Aluminium Dials Aluminum
1528	Hygrometer	125	5	180 × 70	7 × 2 3/4	
1529	Thermometer	125	5	180 × 70	7 × 2 3/4	
1560	Uhr, Clock · QUARTZ	125	5	180 × 70	7 × 2 3/4	
1561	Uhr, Clock · 8-Tag, 8 day Glasenschlag, Ship's Bell	125	5	180 × 70	7 × 2 3/4	
1566	Uhr, Clock · 8-Tag, 8 day	125	5	180 × 70	7 × 2 3/4	



1512



1513



1541 
1516



1550

No.	Instrument	Skala mm ϕ	Dial in ϕ	Gehäuse · Case mm ϕ	in ϕ	Beschreibung · Description
1512	Baro/Thermometer	125	5	180 × 70	7 × 2 $\frac{3}{4}$	MESSING BRASS · LAITON Skalen Fischsilber Dials silver-white
1513	Barometer	125	5	180 × 70	7 × 2 $\frac{3}{4}$	
1541	Uhr, Clock · 8-Tag, 8 day Glasenschlag, Ship's Bell	125	5	180 × 70	7 × 2 $\frac{3}{4}$	
1516	Uhr, Clock · 8-Tag, 8 day	125	5	180 × 70	7 × 2 $\frac{3}{4}$	
1550	Uhr, Clock · QUARTZ	125	5	180 × 70	7 × 2 $\frac{3}{4}$	



1613



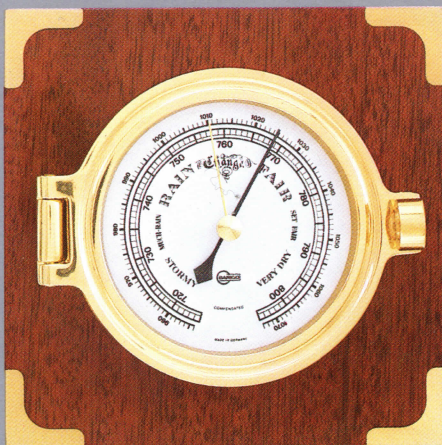
1641



1650

1616

No.	Instrument	Skala · Dial		Gehäuse · Case		Beschreibung · Description
		mm \varnothing	in \varnothing	mm \varnothing	in \varnothing	
1613	Barometer	150	6	220 × 70	8 3/4 × 2 3/4	MESSING BRASS · LAITON Skalen Fischsilber Dials silver-white
1641	Uhr, Clock · 8-Tag, 8 day Glasenschlag, Ship's Bell	150	6	220 × 70	8 3/4 × 2 3/4	
1650	Uhr, Clock · QUARTZ	150	6	220 × 70	8 3/4 × 2 3/4	
1616	Uhr, Clock · 8-Tag, 8 day	150	6	220 × 70	8 3/4 × 2 3/4	



1285



1287

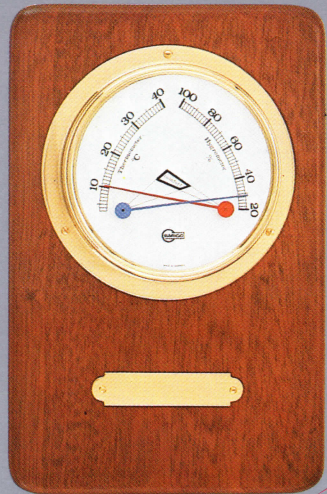
No.	Instrument	Skala · Dial mm ϕ in ϕ		Gehäuse · Case mm ϕ in ϕ		Beschreibung · Description
1285	Barometer	85	3 ³ / ₈	140 × 140 × 60	5 ¹ / ₂ × 5 ¹ / ₂ × 2 ³ / ₈	MESSING BRASS · LAITON Mahagony poliert Mahogany polished
1287	Uhr, Clock · QUARTZ	85	3 ³ / ₈	140 × 140 × 60	5 ¹ / ₂ × 5 ¹ / ₂ × 2 ³ / ₈	



1745



1747

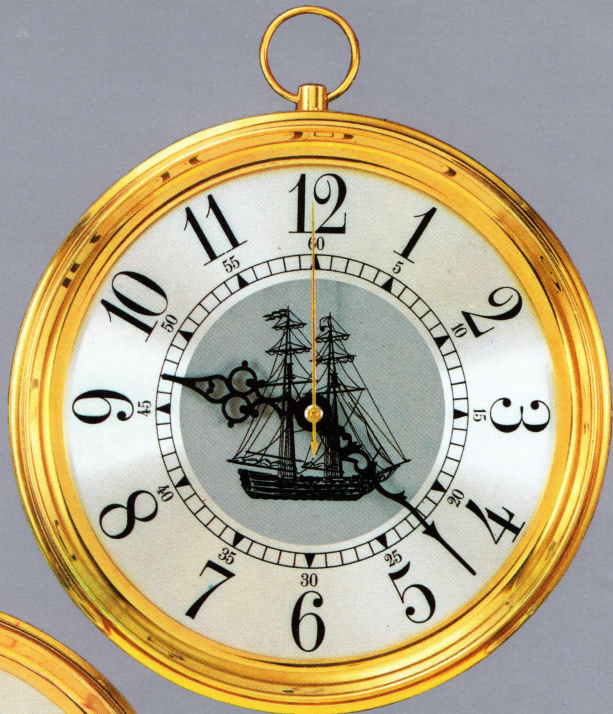


1750

1748

1749

No.	Instrument	Skala · Dial		Gehäuse · Case		Beschreibung · Description
		mm ø	in ø	mm ø	in ø	
1745	Barometer	70	2¾	170 × 110 × 40	6⅝ × 4⅜ × 1½	MESSING BRASS · LAITON Mahagoni matt Mahogany matt
1747	Uhr, Clock · QUARTZ	70	2¾	170 × 110 × 40	6⅝ × 4⅜ × 1½	
1750	Thermo/Hygrometer	70	2¾	170 × 110 × 40	6⅝ × 4⅜ × 1½	
1748	Hygrometer	70	2¾	170 × 110 × 40	6⅝ × 4⅜ × 1½	
1749	Thermometer	70	2¾	170 × 110 × 40	6⅝ × 4⅜ × 1½	

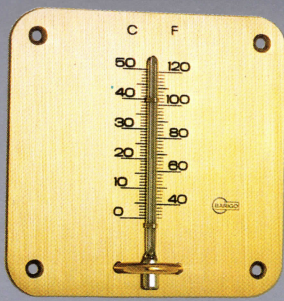


9063

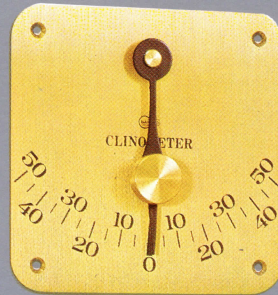
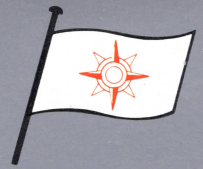


9033

No.	Instrument	Skala · Dial		Gehäuse · Case		Beschreibung · Description
		mm \varnothing	in \varnothing	mm \varnothing	in \varnothing	
9063	Uhr, Clock · QUARTZ	200	8	230 × 65	9 × 2 1/2	MESSING BRASS · LAITON Skalen Ms versilbert Dials brass, silver plated
9033	Baro/Thermometer Hygrometer	200	8	230 × 65	9 × 2 1/2	



909



910



855



911

No.	Instrument	Skala · Dial		Gehäuse · Case		Beschreibung · Description
		mm ϕ	Dial in ϕ	mm ϕ	Case in ϕ	
909	Thermometer			80 × 80	3 1/8 × 3 1/8	
910	Clinometer			80 × 80	3 1/8 × 3 1/8	
911	Clinometer	130	5 1/8	155 × 50	6 1/8 × 2	
855	Thermometer			220 × 35	8 3/4 × 1 3/8	



RAUTEC

PTY. LTD.

BARIGO

70 - 2 3/4" **PILOT**

No.	page 2
713 Bar.	29.-
717 Qtz. Cl.	42.-
718 Hyg.	22.-
719 Ther.	21.-
720 Th/Hy.	25.-
721 Clin.	23.-
Chrome.	+ 6.-

85 - 3 3/8" **NEPTUN**
solid

No.	page 6
1385 Bar.	59.-
1387 Qtz. Cl.	72.-
1388 Hyg.	48.-
1389 Ther.	47.-
1390	52.-

70 - 2 3/4" **CORSAR**

No.	page 3
723 Bar.	32.-
727 Qtz. Cl.	46.-
728 Hyg.	25.-
729 Ther.	24.-

90 - 3 1/2" **CAPTAIN**

No.	page 7
2185 Bar.	40.-
2186 Ba/Th.	43.-
2187 Qtz. Cl.	48.-
2187/8 Clock.	59.-
2188 Hyg.	34.-
2189 Ther.	32.-
Chrome.	+10.-
'Spokes +	16.-

85 - 3 3/8" **STAR**

No.	page 4-5
1184 Q. Alarm.	55.-
1185 Bar.	33.-
1186 Ba/Th.	37.-
1187 Qtz. Cl.	48.-
1188 Hyg.	26.-
1189 Ther.	25.-
1190 Th/Hy.	29.-
1191 Clin.	27.-
Chrome.	+ 8.-

100 - 4" **YACHT**

No.	page 8-9
612 Ba/Th.	47.-
612/70 "	50.-
613 Bar.	44.-
613/70 "	48.-
616 Clock	62.-
617 Q. Cl. T.	73.-
618 Hyg.	37.-
619 Ther.	36.-
620 Hy/Th.	41.-
2350 Qtz. Cl.	51.-
2441/70 Bell.	101.-
Chrome	+10.-
'Spokes +	16.-

● IMPORTERS ● WHOLESALERS ● AGENTS

P.O. BOX 25, MOUNT WAVERLEY, VICTORIA, AUSTRALIA, 3149

Office:
79 Headingley Road
Mt. Waverley, 3149
Telephone: 232 5296

Ship's Clocks

BAROMETER
HYGROMETER
THERMOMETER

Price List

1.1.1981

100 - 4"
solid

ADMIRAL

No.	page 10-11
1485 Bar.....	69.-
1486 Ba/Th....	73.-
1487 Qtz.. Cl..	76.-
1488 Hyg.....	59.-
1489 Therm....	57.-
1491 Bell....	125.-
1492 Q. Bell	148.-

150 - 6"

COLUMBUS

No.	page 15
1613 Bar.....	85.-
1616 Clock...	107.-
1641 Bell....	139.-
1650 Qtz.. Cl..	92.-

125 - 5"
Fancy

CLIPPER

No.	page 12-13
1524 Bar.. S...	67.-
1570 Qtz.. Cl..	68.-
1571 Bell....	109.-
1576 Clock....	84.-
1523 Bar.....	60.-
1528 Hyg.....	53.-
1529 Ther....	52.-
1560 Qtz.. Cl..	67.-
1561 Bell....	117.-
1566 Clock....	83.-

3 3/8"
Mahog.

VIP

No.	page 16
1285 Bar.....	69.-
1287 Qtz.. Cl..	83.-

2 3/4"
Trophy

ACE

No.	page 17
1745 Bar.....	27.-
1747 Qtz.. Cl..	37.-
1748 Hyg.....	21.-
1749 Ther....	20.-
1750 Th/Hy....	23.-

125 - 5"
Std.

NAUTILUS

No.	page 14
1512 Ba/Th....	62.-
1513 Bar.....	59.-
1516 Cl.....	81.-
1541 Bell....	115.-
1550 Qtz.. Cl..	66.-

200 - 8"

MARINER

No.	page 18
9033 B.T.H....	72.-
9063 Qtz.. Cl..	85.-

No.	page 19
909 Therm....	8.-
910 Clin.....	9.-
911 Clin.....	30.-
855 Ther.....	15.-

Price List WHOLESALE ONLY effective 1.1.81
Prices are ex store Melbourne and are plus Sales
Tax of 27½% for clocks and 15% all other items.