

No. 6.

---

ILLUSTRATED CATALOGUE

AND

PRICE LIST

OF

COPPER WEATHER VANES, BANNERETS,

AND FINIALS,

MANUFACTURED BY

A. B. & W. T. WESTERVELT,

---

OFFICE AND WAREHOUSES:

107 NASSAU ST.,

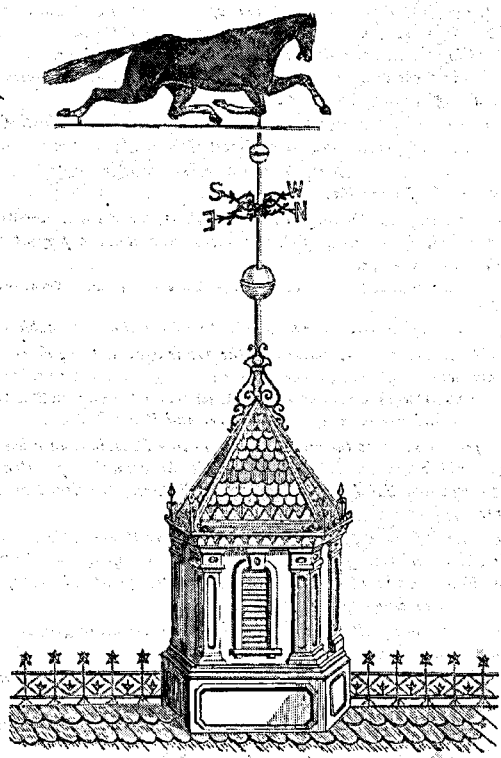
NEW YORK.

NEW YORK.

---

Entered as second-class matter, March 18, 1883, by A. B. & W. T. Westervelt,  
Postoffice at New York, N. Y., under No. 107, as Librarian of Congress, at Washington, D. C.

CUPOLA AND VANE.



This cut represents a Cupola and Vane, mounted complete, showing the proper position of Balls and Points of Compass. If no compass is at hand to set the cardinal points by, notice that the sun is exactly in the South at meridian (or noon).

DIRECTIONS FOR PUTTING UP VANE

Bore or cut a hole perfectly perpendicular—care must be taken it will make the Vane stand crooked—the hole should be a little larger than the size of the vane. Fill any crevices or joints with White Lead should be set in from 8 to 12 inches, and for a very large Vane, 18 inches to

**NOTE.**—Avoid handling the gilding with the bare hands; handle with tissue-paper, cotton or soft cloth.

All the tools necessary are a screw driver, with which to fasten the Vane to the Spire, and brace and bit or chisel, to make the hole for the lower Ball to Spire, and

## PREFACE.

*In compiling this (the sixth) edition of our Illustrated Catalogue of Weather Vanes, Bannerets and Finials, we have endeavored to include appropriate designs for Churches, Public Buildings, Residences, Stables, Barns, &c., &c., thus making it the most complete work issued; we are, however, continually adding new and original designs to our stock.*

*Our Vanes are made Entirely of Copper and Gilded with the Finest Gold Leaf, will keep bright, will not corrode, and are perfect indicators of the wind's direction.*

*The letters and balls are well gilded, the spires are of wrought iron, with hardened steel spindles for the Vanes to turn upon.*

*Our Copper Eagles, from the largest to the smallest, for Vanes or Architectural purposes, are full-bodied, the wings of double thickness, and are a perfect representation of the American Eagle.*

*The Price of each Vane includes a Wrought Iron Spire with points of Compass, Gilt Letters and Balls.*

*Vanes of any design or size, to order on short notice and at reasonable rates.*

*We would caution our customers and the public against being deceived by Vanes which are now being made, (copied after our original designs,) which are manufactured of Sheet Zinc and covered with a thin solution of Copper with Zinc Tubing, unlike our Vanes, which are made of Sheet Copper and Brass Tubing.*

*Special attention given to the erection of Lightning Rods, in connection with our Vanes, Crestings, Finials and Terminals. All the varieties of Galvanized Iron, Copper covered and Solid Copper Rods with Fixtures, furnished on short notice, (see page 99.)*

*With the view of simplifying the ordering of our Vanes, please describe each design by the name, &c., given in this book; always specifying the Figure Number, size of Vane, and number of this catalogue (No. 6); also, be careful to give full and particular shipping directions.*

*Experienced persons will be sent to receive instructions, to give practical information and take orders.*

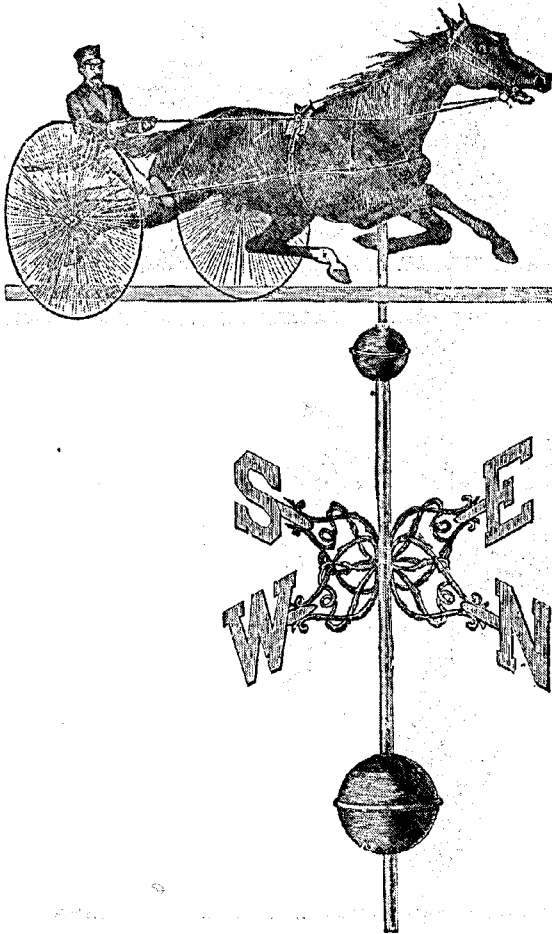
*It will be our endeavor to ship all goods with promptness, and careful attention is given to packing.*

*We make our grateful acknowledgments to our customers and friends for past favors, and trust to merit their future patronage.*

*Respectfully*

A. B. & W. T. WESTERVELT.

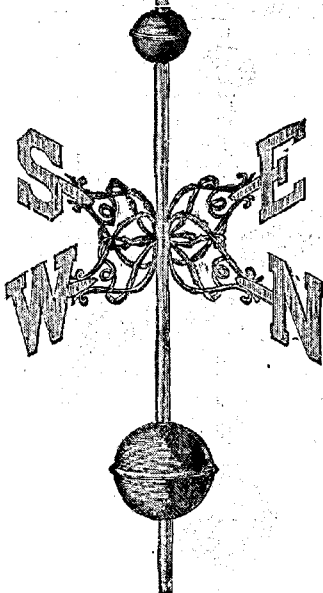
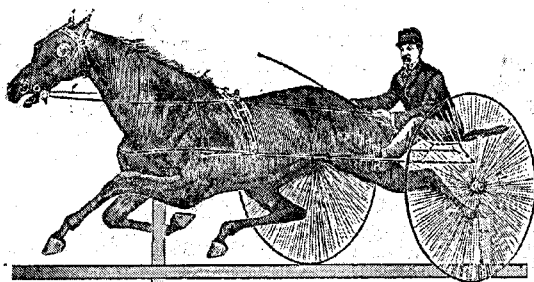
ST. JULIAN.



No. 301.	New design, 39 inches long, full bodied.....	\$44 00
" 302.	" " 48 " " with Sulky and Driver.....	62 00
" 303.	" " 32 " " swell bodied.....	20 00

☞ All our Vanes are made of copper, and gilded with finest gold leaf.

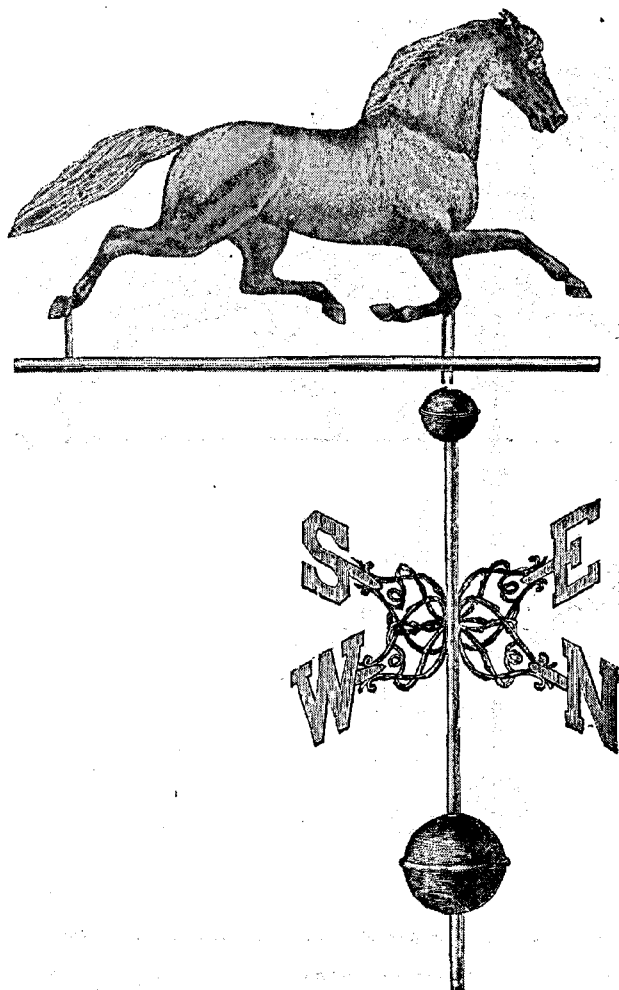
MAUD S.



No. 301.	New design,	23 inches long,	full bodied	.....	\$42 00
" 303.	" "	44 " "	with Sulky and Driver	.....	60 00
" 306.	" "	31 " "	swell bodied	.....	33 00

† All four Vanes are made of copper, and gilded with finest gold leaf.

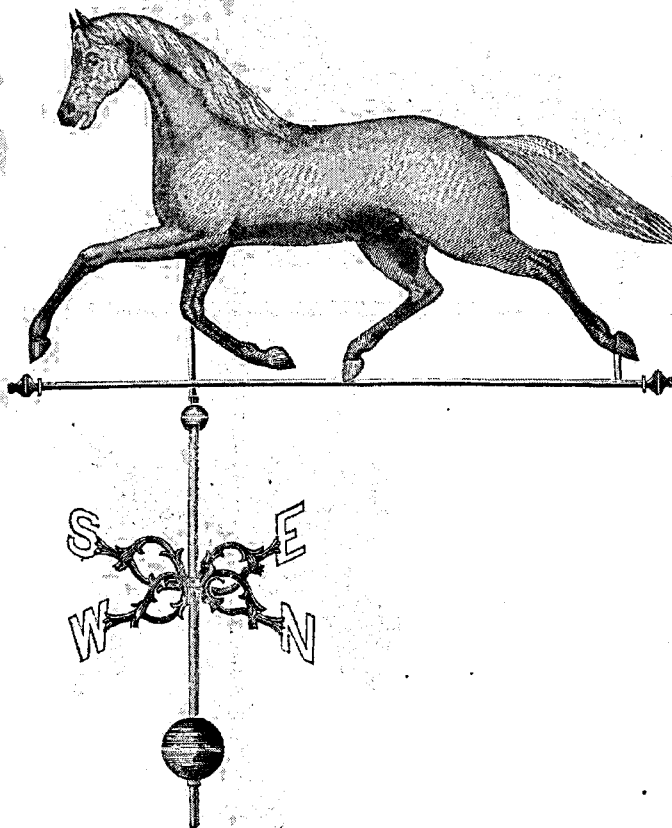
LARGE 48-INCH ETHAN ALLEN.



No. 159 c.	4 feet long.....	\$75 00
" 159 d.	4 " " with Jockey.....	85 00
" 159 e.	5 " " Sulky and Driver.....	100 00
" 159 f.	5 " 6 Inches, with Wagon and Driver.....	125 00

☞ All our Vanes are made of copper, and gilded with finest gold leaf.

GEORGE M. PATCHEN.



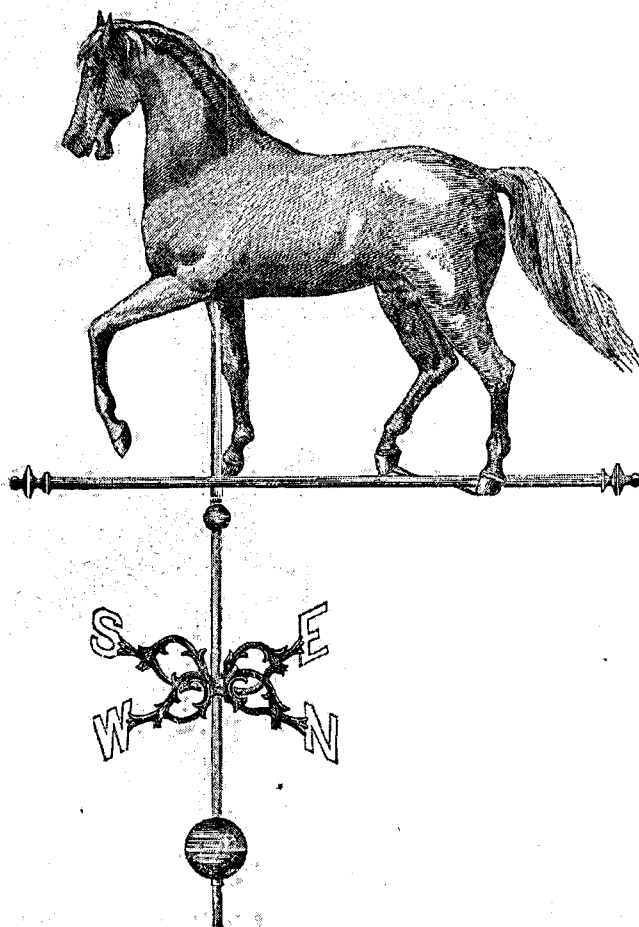
No. 186. 3 feet 6 inches long, swell bodied.....	\$40 00
" 187. 4 " 4 " " with Sulky and Driver.....	60 00
" 187 1/2. 5 " long, with Wagon " .....	83 00

The price of each Vane includes an iron spire, appropriate letters and balls complete.





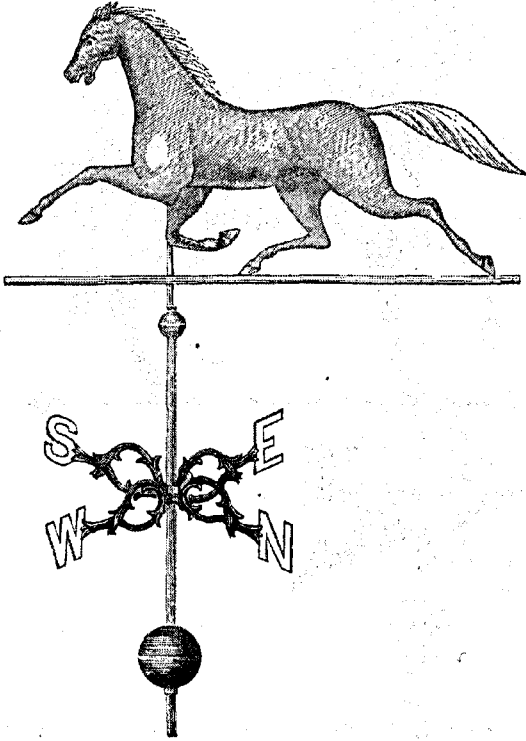
NEW DESIGN.—STALLION.



No. 163. 28 inches long, full bodied.....\$50 00

All our Vanes are made of copper, and gilded with finest gold leaf.

ETHAN ALLEN.



*Large, Handsome, Showy Horse Vane, at a Low Price.*

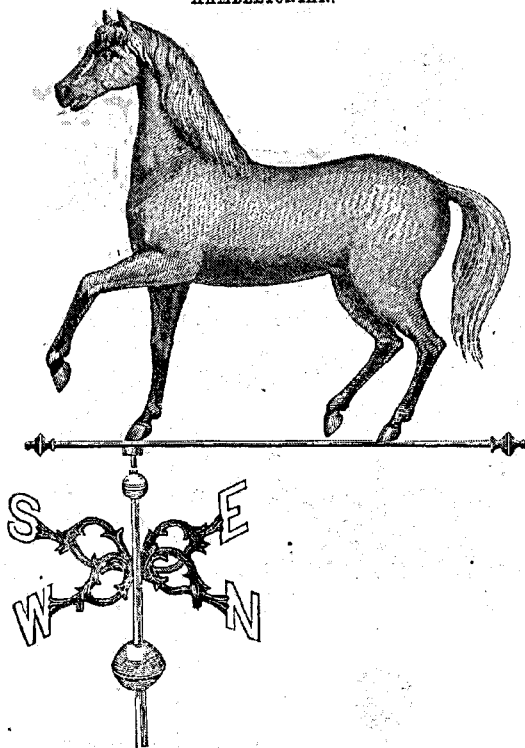
SWELL BODIED, COPPER.

No. 189.	31 inches long.....	\$20 00
" 189j.	36 " " with Sulky and Driver.....	30 00
" 189a.	31 " " " Jockey.....	25 00
" 189b.	39 " " " Wagon and Driver.....	35 00

☞ All complete as above, with Spire, Letters and Balls.

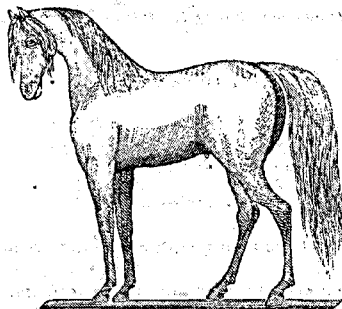
Note.—Our Vanes are gilded with finest gold leaf, and on copper, warranted to stand the weather in any climate, and not tarnish or corrode.

HAMBLETONIAN.



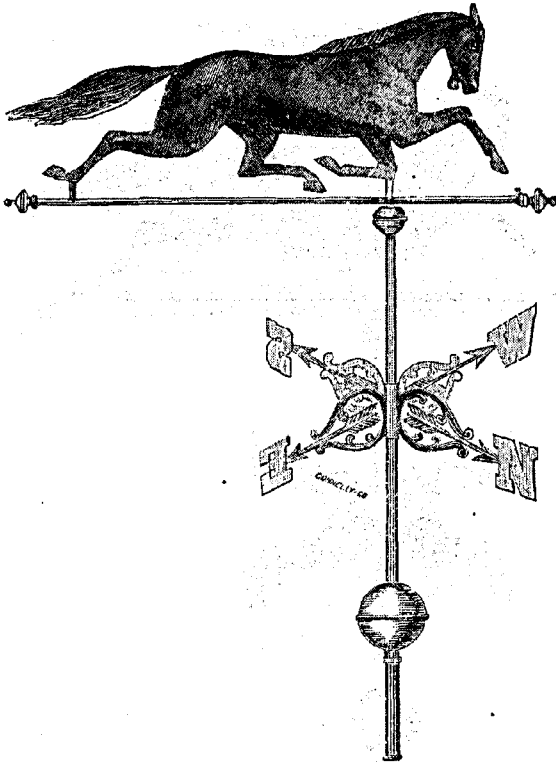
No. 166. New design, 26 inches long ..... \$25 00-

ARABIAN.



No. 304A. 17 inches long, mounted complete as shown above..... \$14 00-

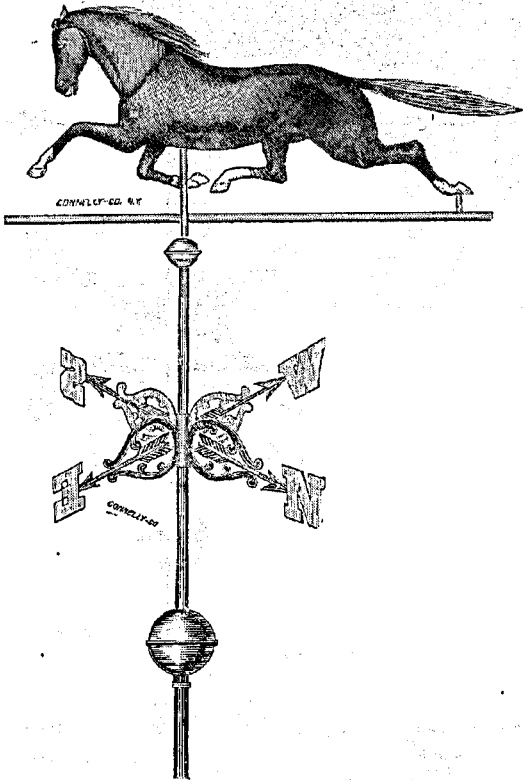
DEXTER.



No. 167.	48 inches long.....	\$40 00
" 172.	48 " " with Jockey.....	50 00
" 170.	53 " " Sulky and Driver.....	55 00
" 173.	57 " " Wagon and Driver.....	75 00
" 174.	34 " " .....	22 00
" 174½.	34 " " with Jockey.....	27 00
" 175.	42 " " Sulky and Driver.....	33 00
" 173.	50 " " Wagon and Driver.....	40 00

☞ All our Vanes are made of copper, and gilded with finest gold leaf.

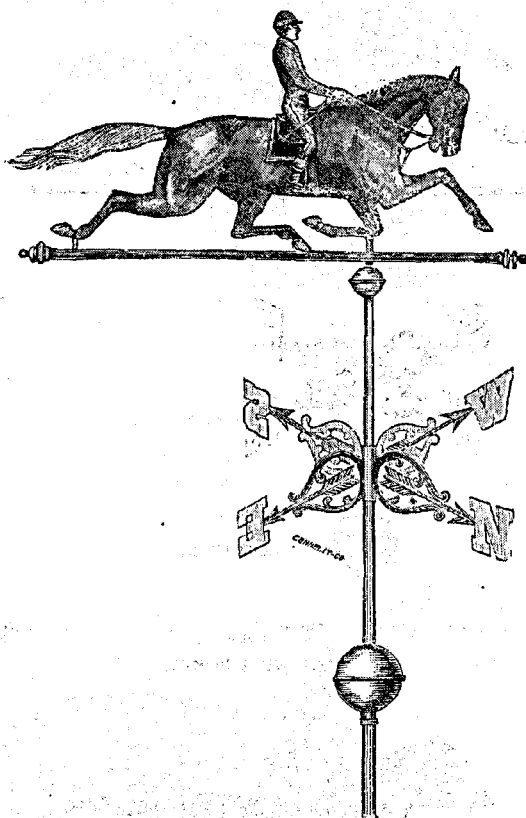
DEXTER.



No. 168 A3.	26 inches long, new design, full bodied.....	\$25 00
" 168 1/2 A3.	26 " with Jockey.....	30 00
" 169 A3.	34 " " Sulky and Driver.....	35 00
" 165 B3.	42 " new design, full bodied.....	50 00
" 165 1/2 B3.	42 " with Jockey.....	65 00
" 171 B3.	38 " " Sulky and Driver.....	75 00

All our Vanes are made of copper, and gilded with finest gold leaf.

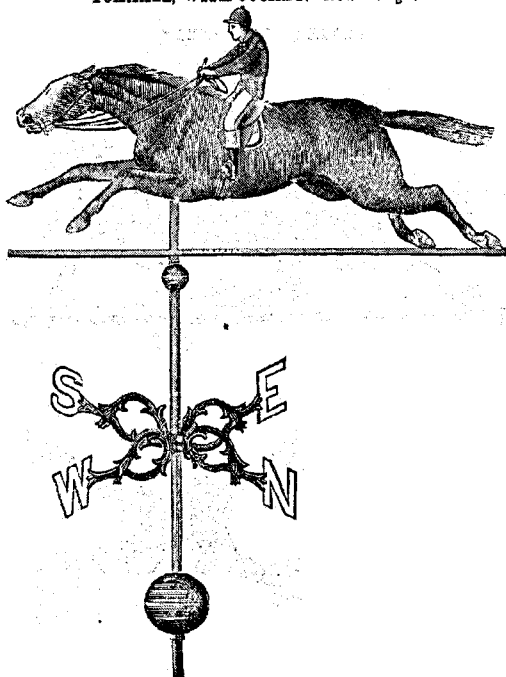
DEXTER, WITH JOCKEY.



No. 176½	42 inches long, full bodied, with Jockey.....	\$65 00
“ 177.	43 “ “ swell “ “ “ .....	50 00
“ 178.	34 “ “ “ “ “ “ .....	27 00
“ 178½	28 “ “ full “ “ “ .....	30 00

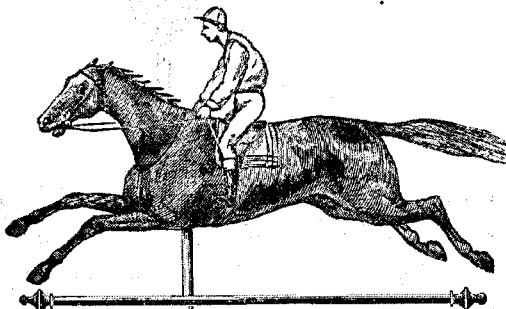
178 All our Vanes are made of copper, and gilded with finest gold leaf.

FOXHALL, WITH JOCKEY.—New Design.



No. 305A. New design, 31 inches long, full bodied ..... \$30 00  
 " 305A. " " 31 " " without Jockey..... 25 00

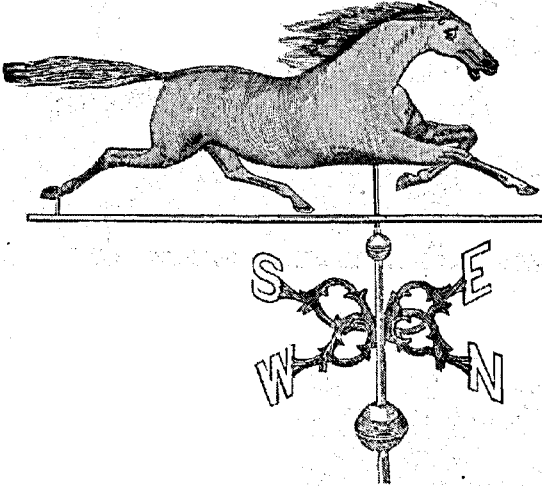
KENTUCKY, WITH JOCKEY.



No. 179. New design, 23 inches long, full bodied, mounted complete, as shown above. \$30 00  
 " 180. " " " " without Jockey, mounted complete, as shown above..... 25 00

⚡ All our Vanes are made of copper, and gilded with finest gold leaf.

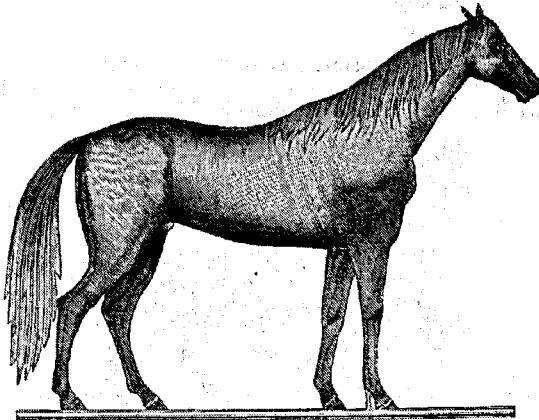
**GOLDSMITH MAID.**



**NEW DESIGN, FULL BODIED.**

No. 188.	32 inches long.....	.....	\$30 00
" 184.	40 " with Sulky and Driver .....	.....	45 00
" 183.	46 " " Wagon " .....	.....	50 00

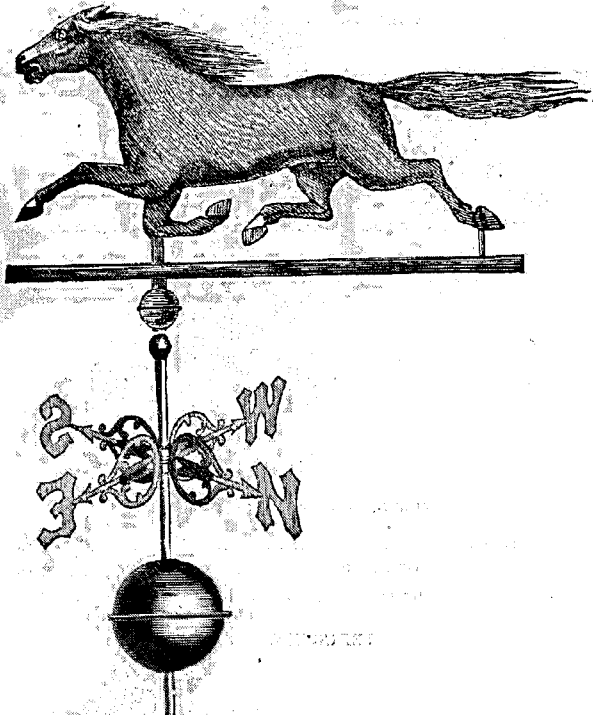
**LEXINGTON.**



No. 188.	35 inches long, mounted complete, as shown above.....	.....	\$30 00
----------	---	-------	---------



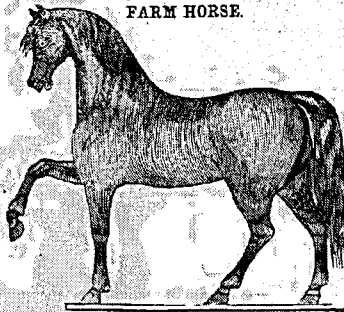
SMUGGLER.



A VERY ATTRACTIVE VANE, FULL OF ACTION.

No. 164.	31 inches long .....	\$20 00
" 164a.	31 " with Jockey .....	25 00
" 164b.	36 " " Sulky and Driver .....	30 00

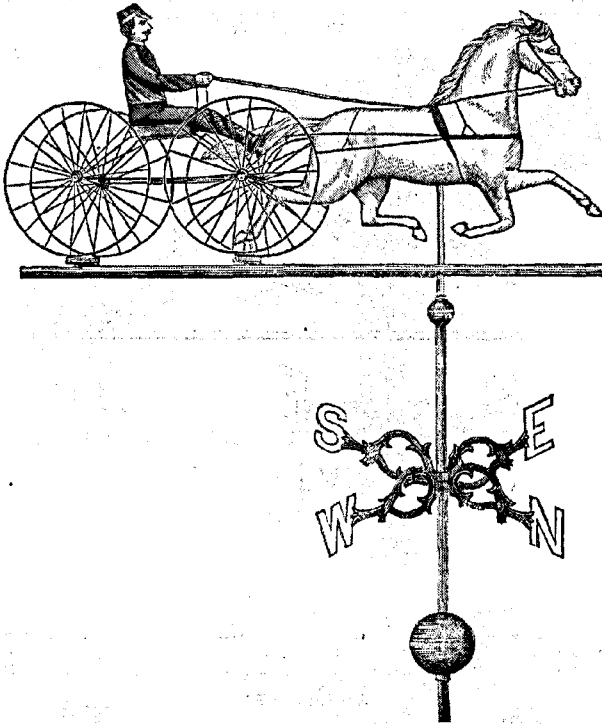
FARM HORSE.



No. 164.	18 inches long, mounted complete, as shown above.....	\$14 00
----------	---	---------

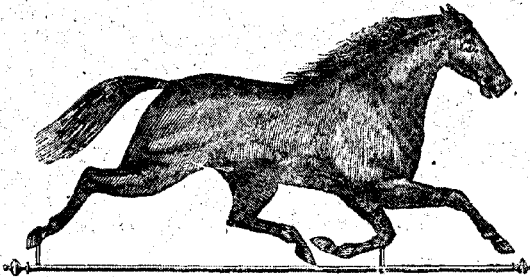
⚡ All our Vanes are made of copper, and gilded with finest gold leaf.

HORSE TO WAGON.



No. 194 Horse to Wagon. 46 inches long. .... \$50 00

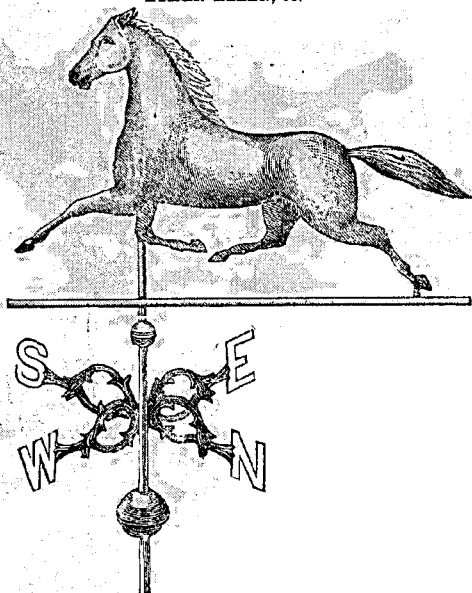
MOUNTAIN BOY



No. 194 33 inches long, new design, full bodied, mounted complete, as shown above. \$35 00

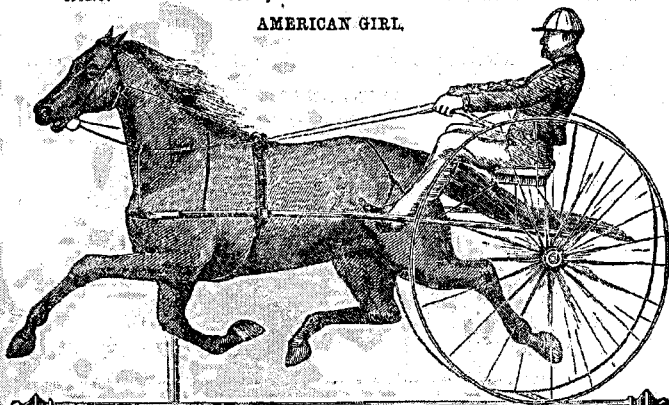
All four Vanes are made of copper, and gilded with finest gold leaf.

ETHAN ALLEN, Jr.



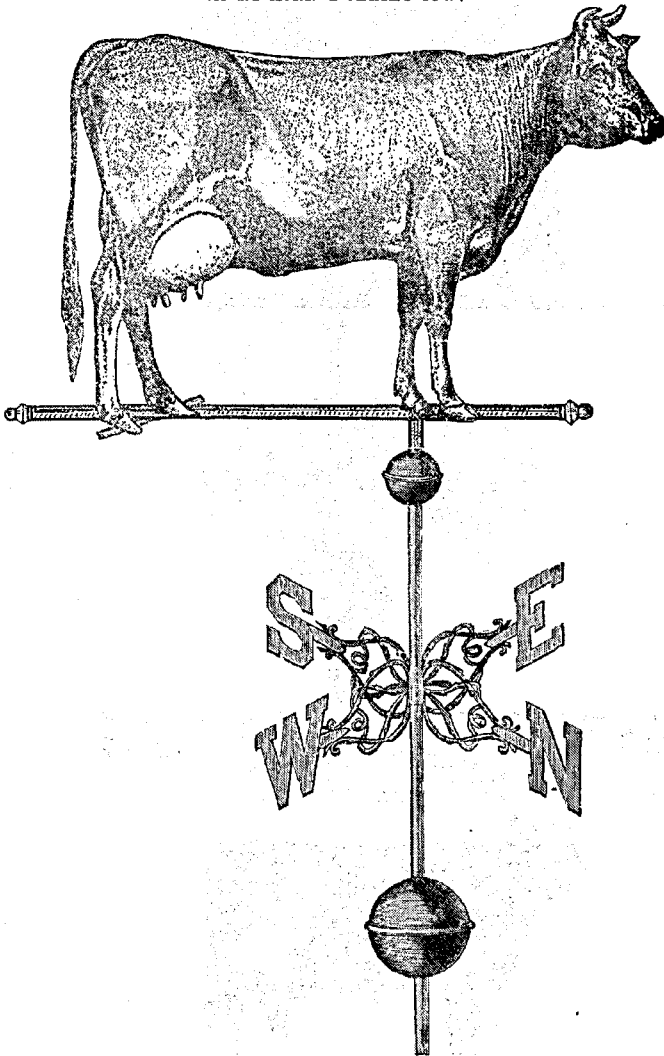
No. 180.	26 inches long.....	\$15 00
" 190a.	30 " with Sulky and Driver.....	25 00
" 190b.	26 " " Jockey.....	20 00

AMERICAN GIRL.



No. 161.	32 inches long, mounted complete, as shown above.....	\$35 00
" 182.	36 " with Sulky and Driver, mounted complete, as shown above. 45 00	
" 193.	42 " " Wagon and Driver " " " " 50 00	

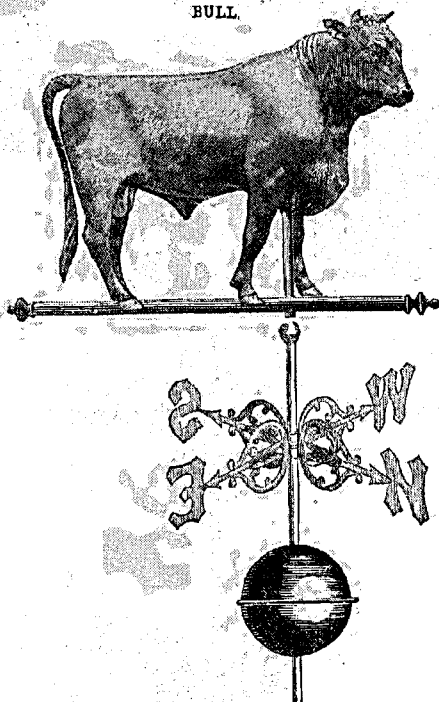
SHORT HORNED JERSEY COW.



NEW MODEL.—4 FEET LONG.

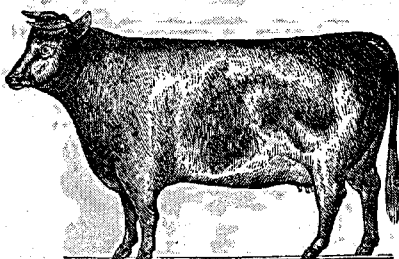
No 199.	34 inches long	.....	\$35 00
" 200.	48 " "	.....	125 00

BULL.



No. 195.	23 inches long, new design, full bodied	.....	\$50 00
" 195A. 38	" " " " "	.....	125 00
" 195A. 43	" " " " "	.....	175 00

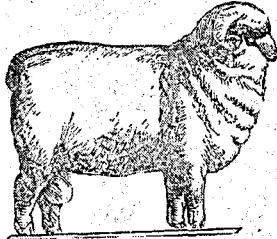
COW.



No. 196.	23 inches long, full bodied, mounted complete as shown above	.....	\$30 00
" 197.	42 " " old design, " "	.....	77 00
" 198.	34 " " " " "	.....	80 00

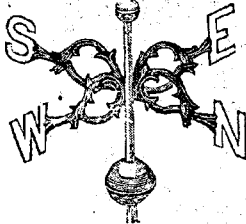
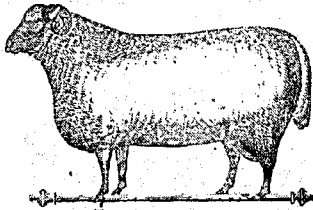


**MERINO RAM, ETHAN ALLEN.**



No. 204. 3 feet long, mounted complete, as shown below.....\$50 00

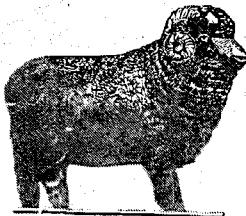
**SHEEP.**



No. 205. 28 inches long.....\$25 00

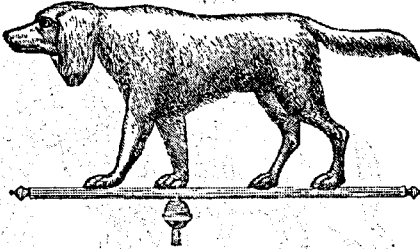
Any other style or size to order.

**MERINO RAM, SWEEPSTAKES.**



No. 206. 2 feet 5 inches long, mounted complete, as shown above.....\$32 00  
 " 206A. 3 feet long..... 50 00

**SPORTSMAN'S DOG.**



No. 71. 33 inches long, swell bodied, mounted complete, as shown opposite.....\$25 00

**DOLPHIN OR DRAGON VANE.**



No. 72. 26 inches long, full bodied, mounted complete, as shown opposite.....\$35 00

**OSCEOLA CHIEF.**



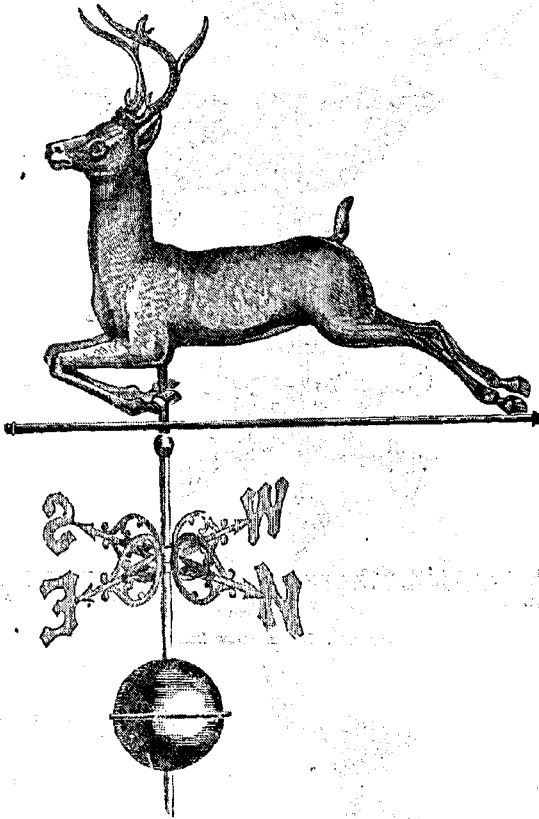
No. 73. 39 inches high, mounted complete, as shown opposite.....\$40 00

☞ Other sizes and styles to order.





RUNNING DEER.

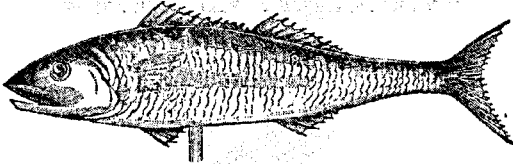


No. 231.	New design, 50 inches long, full bodied.....	\$90 00
" 232.	" 26 " " .....	50 00
" 233.	" 20 " " .....	30 00
" 234.	" 30 " " .....	40 00

☞ All our Vanes are made of copper, and gilded with finest gold leaf.

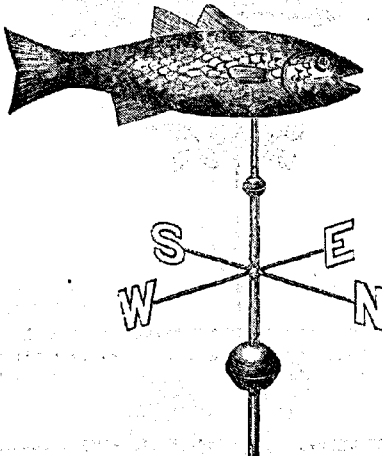


FISH VANE.—New Design.



No. 307. 30 inches long, new design, full bodied; mounted complete, as shown below, \$30 00  
 " 308. 33 " " " " " " " " " " 40 00

FISH VANE.



No. 2094. 18 inches long, full bodied.....\$15 50  
 " 209. 24 " " ..... 17 50  
 " 210. 30 " " ..... 20 00  
 " 2104. 36 " " ..... 30 00  
 " 210A. 42 " " ..... 40 00

FISH SIGNS.—Flat.

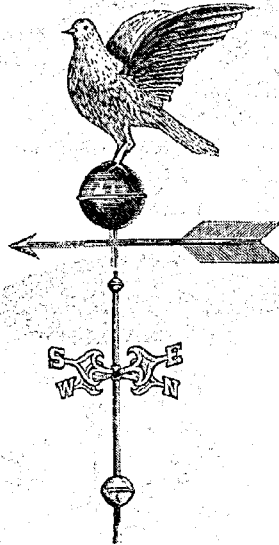


No. 211. Fish for swinging signs, 9 inches long.....\$8 00  
 " 212. " " " 16 " ..... 4 00

Any size of the above styles to order.

⚠ The price of each Vane includes a wrought iron spire, points of compass, and gilt letters and balls.

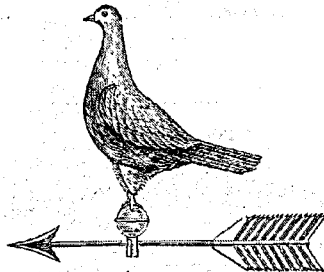
NEW DESIGN, PIGEON ON BALL, WITH ARROW.



(WINGS SPREAD.)

- No. 146. New design, full bodied, 18 inches high, including ball and arrow, with 2 feet arrow.....\$25 00  
 " 147. " " " 18 " " " " " 2 ft. 6 in. arrow...32 00

NEW DESIGN, PIGEON ON BALL, WITH ARROW.

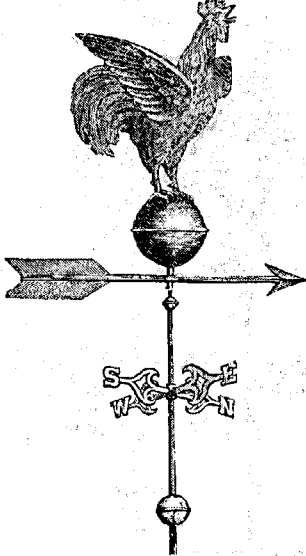


(WINGS FOLDED.)

- No. 148. New design, full bodied, 18 inches high, including ball and arrow, with 2 feet arrow... \$20 00  
 " 149. " " " 18 " " " " " 2 " 6 in. arrow 24 00  
 Mounted complete, as shown above.

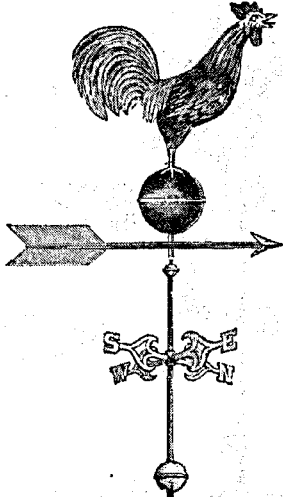
☞ All our Vanes are made of copper, and gilded with finest gold leaf.

**NEW DESIGN, CROWING ROOSTER ON BALL, WITH ARROW. (Wings Spread.)**



- No. 142. New design, full bodied rooster, 21 inches high (including ball and arrow),  
with 2 feet 6 inches arrow.....\$38 00  
" 143. With 2 feet arrow..... 35 00

**NEW DESIGN, CROWING ROOSTER ON BALL, WITH ARROW. (Wings Closed.)**



- No. 144. New design, full bodied crowing rooster, 21 inches high (including ball and  
arrow), with 2 feet 6 inches arrow.....\$34 00  
" 145. With 2 feet arrow..... 20 00

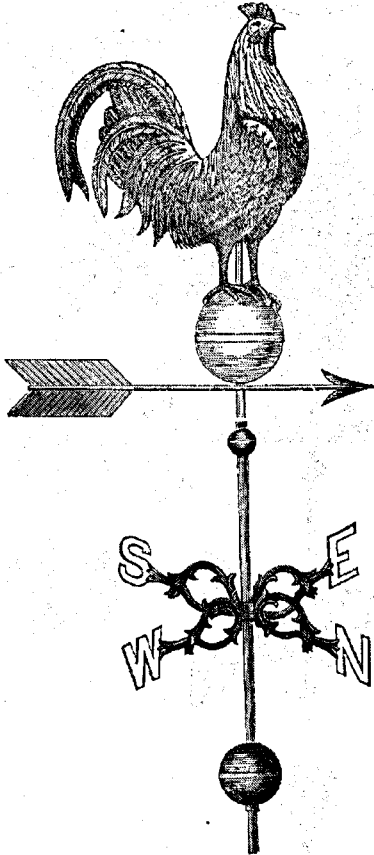








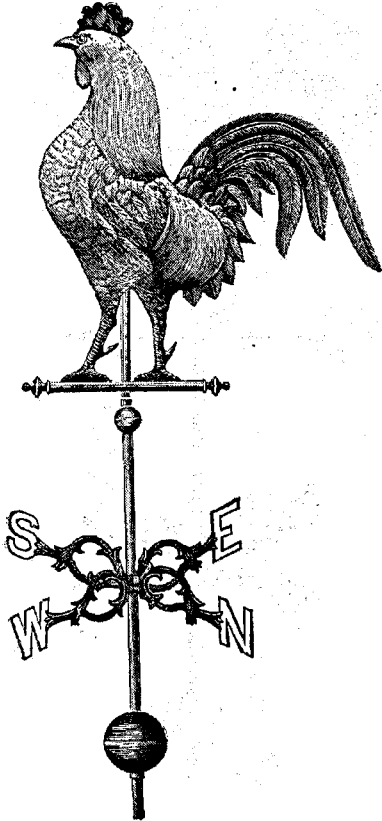
NEW DESIGN ROOSTER AND ARROW VANE.



No. 150.	15 inches high, with 18 inch Arrow	.....	\$14 00
" 151.	20 " " 20 "	.....	20 00
" 152.	32 " " 36 "	.....	40 00
" 152 1/2.	42 " " 60 "	.....	60 00

☞ All our Vanes are made of copper, and gilded with finest gold leaf.

NEW DESIGN ROOSTER VANE.



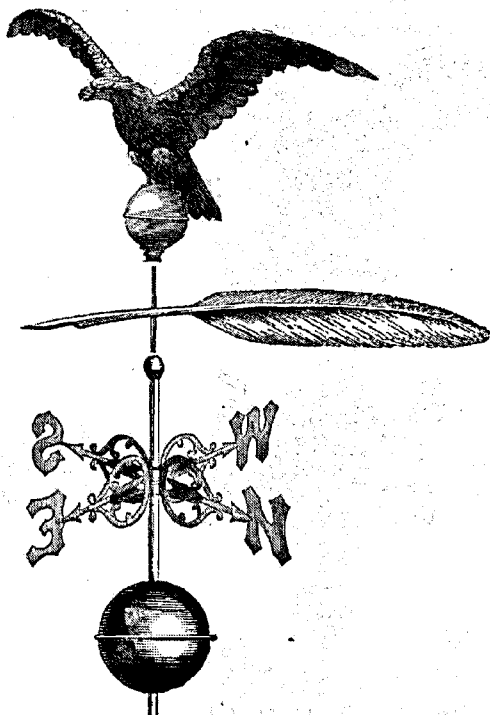
Engraved from a photograph of our Work.

(SWELL BODIED, COPPER)

No. 158.	36 inches high.....	\$35 00	with 4 feet arrow.....	\$50 00
" 159.	29 " .....	25 00	" 3 " " .....	40 00
" 160.	24 " .....	15 00	" 30 inches" .....	25 00
" 161.	14 " .....	7 50	" 24 " " .....	15 00

Rooster standing on Arrow, as shown on page 31—Game Rooster.

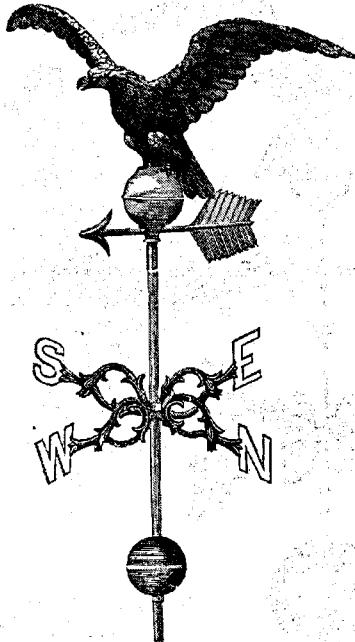
EAGLE AND PEN VANE.



Very handsome, attractive Vanes, especially designed for Schools, Colleges, Academies, Newspaper Buildings, &c., &c.

No. 92.	8 feet spread.....	with 10 feet Pen, \$275 00
" 93.	7 " " .....	" 8 " 225 00
" 94.	6 " " 6 inches spread.....	" 7½ " 200 00
" 95.	5 " " 6 " " .....	" 6¾ " 175 00
" 96.	5 " " spread.....	" 6 " 150 00
" 97.	4 " " 6 inches spread.....	" 5½ " 110 00
" 98.	4 " " spread.....	" 5 " 85 00
" 99.	3 " " 6 inches spread.....	" 4½ " 65 00
" 100.	3 " " spread.....	" 4 " 55 00
" 101.	2 " " 6 inches spread.....	" 3½ " 50 00
" 102.	2 " " spread.....	" 3 " 35 00
" 103.	1 " " 6 inches spread .....	" 80 inch Pen, 25 00
" 104.	1 " " 3 " " .....	" 24 " 15 00
" 105.	1 " " spread.....	" 15 " 12 00

COPPER EAGLE WITH ARROW.



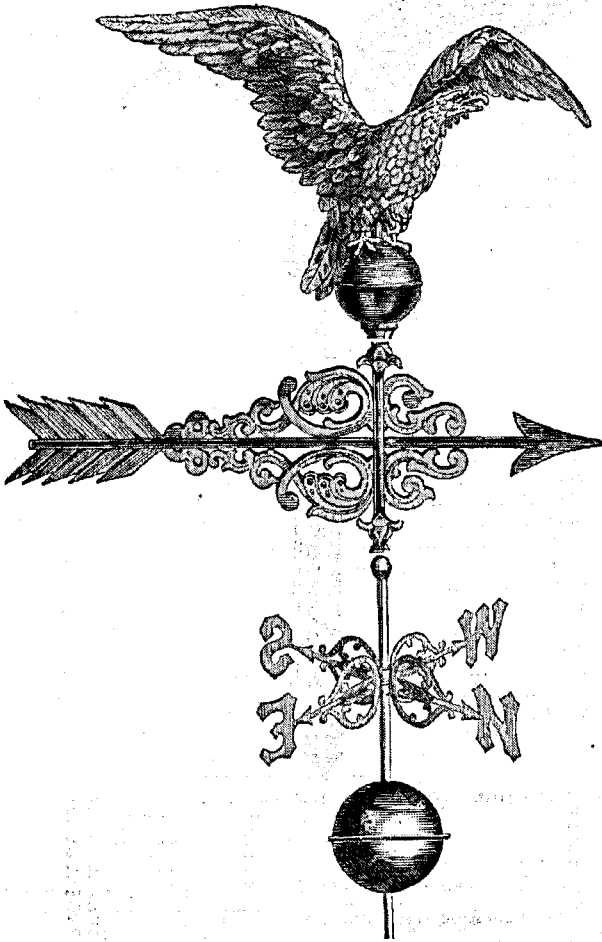
Engraved from a Photograph of our work.

We make a PERFECT EAGLE, wholly of Copper, with double thick wings.

Arrows are indispensable when Eagles are used as Vanes.

Nö. 106.	12 feet spread	.....	\$500 00
" 107.	10 " "	.....	425 00
" 108.	8 " "	.....	300 00
" 109.	7 " "	.....	225 00
" 110.	6 " 6 inches spread	.....	185 00
" 111.	5 " 6 " "	.....	150 00
" 112.	5 " spread	.....	135 00
" 113.	4 " "	.....	70 00
" 114.	3 " 6 inches spread	.....	50 00
" 115.	3 " spread	.....	47 00
" 116.	2 " 6 inches spread	.....	35 00
" 117.	2 " spread	.....	25 00
" 118.	1 foot 6 inches spread	.....	21 00
" 119.	1 " 8 " "	.....	15 00
" 120.	1 " spread	.....	10 00

NEW DESIGN EAGLE AND SCROLL VANE.



No. 121.	Eagle, 15 inches spread with 8 feet scroll.....	\$28 00
" 122.	" 20 " " 3 1/2 " .....	35 00
" 123.	" 30 " " 4 " .....	45 00
" 124.	" 30 " " 5 " .....	75 00
" 1244.	" 48 " " 6 " .....	100 00

☞ All our Vanes are made of copper, and gilded with finest gold leaf.



**CAST ZINC EAGLES**

For Flag Poles, Lamps, Store Signs, Monuments, &c, are not suitable for Vane-

3 inches spread.	\$1 25
4 "	2 25
6 1/2 "	3 25
7 "	4 00
10 "	5 00
18 "	9 00
14 "	10 00
18 "	15 00
23 "	16 50
30 "	24 00
31 "	38 00
30 "	50 00
60 "	96 00

**FLAG POLES.**

25 feet long, 3 inches diameter at Butt	\$10 00
30 " " 8 " "	15 00
35 " " 6 " "	18 00
40 " " 7 " "	23 00
40 " " 8 " "	27 00
45 " " 8 " "	33 00
50 " " 8 " "	40 00
50 " " 9 " "	45 00
55 " " 9 " "	55 00
60 " " 9 " "	70 00
60 " " 10 " "	75 00
65 " " 11 " "	100 00
70 " " 11 " "	110 00

**BEST LIGNUM-VITÆ TRUCKS**

3 inch.	\$ 50	Fitted with brass wheels.	\$1 00
3 1/2 "	70	" " "	1 20
4 "	1 00	" " "	1 40
4 1/2 "	1 20	" " "	1 60
5 "	1 30	" " "	1 80
5 1/2 "	1 40	" " "	2 40
6 "	2 00	" " "	3 00
7 "	3 50	" " "	3 75
8 "	3 50	" " "	5 00



**METAL BALLS FOR FLAG POLES.**

Metal Balls on Stems, gilded with Pure Gold Leaf, for Flag-staffs.

	Each.
3 inches.....	\$ 70
4 ".....	1 10
5 ".....	1 40
6 ".....	2 00
7 ".....	3 00
8 ".....	3 50
9 ".....	6 00
10 ".....	7 75
12 ".....	12 00



Metal Balls, not on Stems, gilded with Pure Gold, for Vanes or other purposes.

	Each.
1 inch.....	\$ 25
2 ".....	35
3 ".....	45
4 ".....	60
5 ".....	95
6 ".....	1 35
7 ".....	1 55
8 ".....	2 00
9 ".....	3 00
10 ".....	4 50
12 ".....	5 00
15 ".....	7 50
18 ".....	18 75
25 ".....	25 00

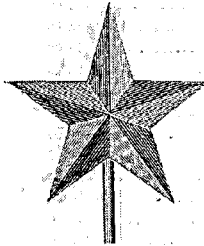
**FLAG POLE BALLS OF BEST SEASONED WHITE WOOD.**

2 inches diameter, each.....	\$ 30
2 1/2 ".....	53
3 ".....	65
4 ".....	1 30
5 ".....	1 80
6 ".....	2 50
7 ".....	3 50
8 ".....	4 50
9 ".....	5 50
10 ".....	6 75

**METAL STARS.**

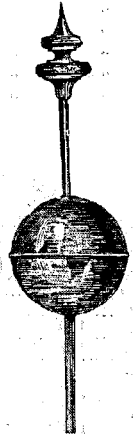
	9 in.	12 in.	15 in.	18 in.	24 in.
5 points.....	\$4 00	\$5 50	\$7 50	\$10 00	\$16 00
6 ".....	5 00	6 50	8 50	11 00	17 00
9 ".....	10 00	13 00	17 00	23 00	34 00
10 ".....	12 00	15 00	19 00	25 00	37 00
12 ".....	14 00	17 00	21 00	28 00	40 00
14 ".....	16 00	18 00	25 00	33 00	50 00

Any other size made to order.



**FLAG POLE ORNAMENTS.**

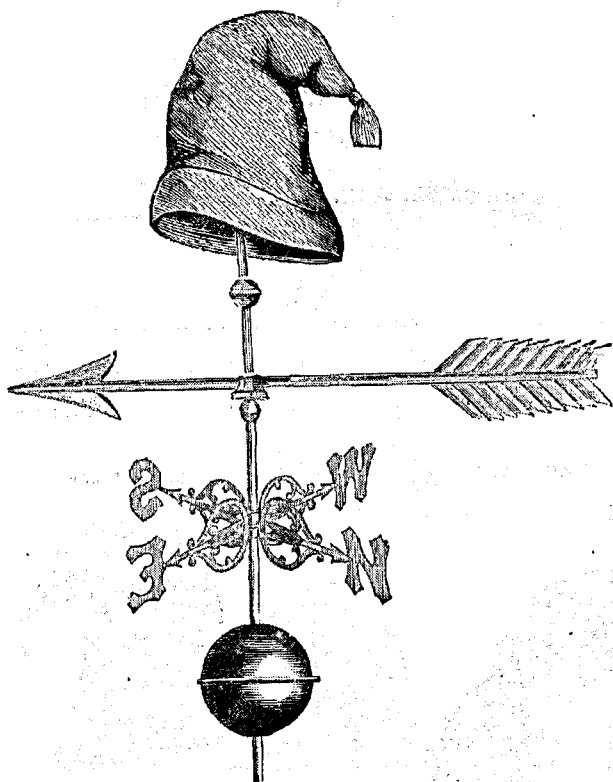
Balls and 5 Points Stars.	3 inch ball.....	\$1 00
3 in. ball, 4 in. star. \$3 20	4 ".....	1 50
4 " 5 " 3 50	5 ".....	2 00
5 " 6 " 4 50	6 ".....	2 75
6 " 7 " 5 50	7 ".....	4 00
8 " 9 " 7 50	8 ".....	4 50
10 " 12 " 13 25	9 ".....	7 50
12 " 15 " 19 50	10 ".....	9 00
15 " 18 " 25 00	12 ".....	14 00







LIBERTY CAP AND ARROW VANE



No. 25.	Liberty Cap, 12 inches high,	Arrow 24 inches long.....	\$20 00
" 26.	" 18 "	" 30 "	40 00
" 27.	" 24 "	" 36 "	55 00
" 28.	" 36 "	" 00 "	85 00

The price of each Vane includes a wrought iron spire with points of compass, gilt letters and balls.



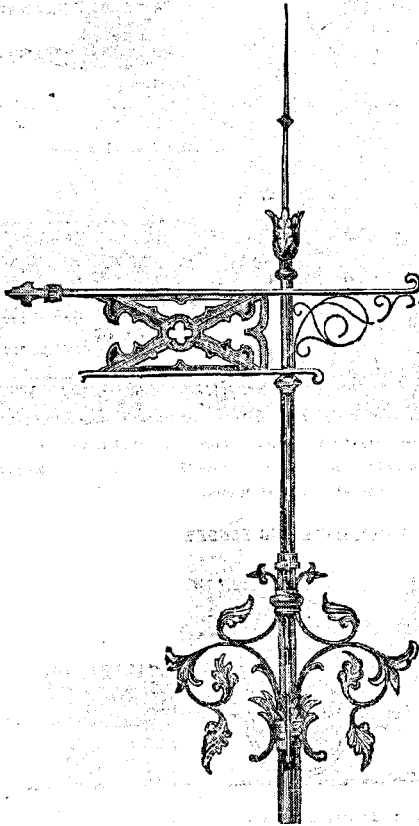








GRECIAN BANNERET, WITH SCROLL.

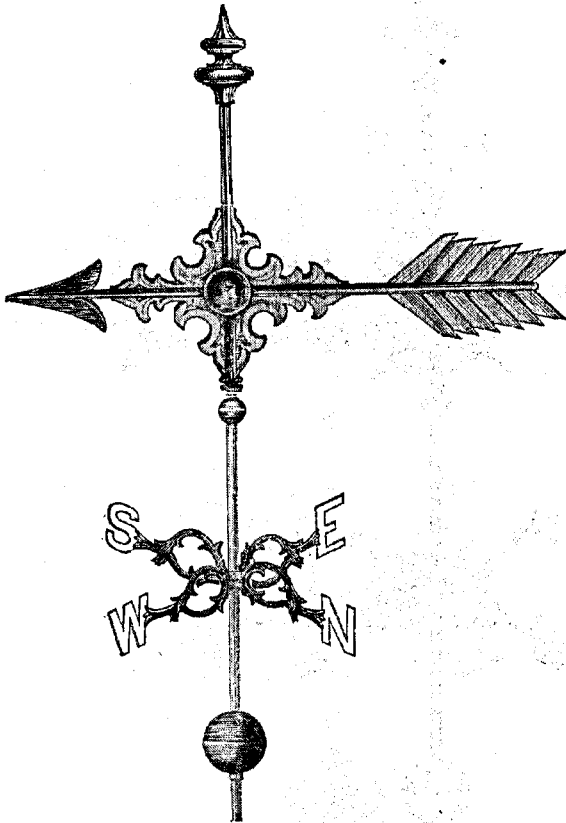


Banneret of Copper, Scroll Decorated in Gold and Colors.

No. 1.	3½ feet, 4 sided, as shown above, with scroll.....	\$70 00
.. 2.	3½ " " mounted as shown on page 50, without scroll.....	65 00
.. 3.	4 " " 4 sided, as shown above, with scroll.....	80 00
.. 4.	4 " " mounted, as shown on page 50, without scroll.....	75 00

All our Vanes are made of copper, and gilded with finest gold leaf.

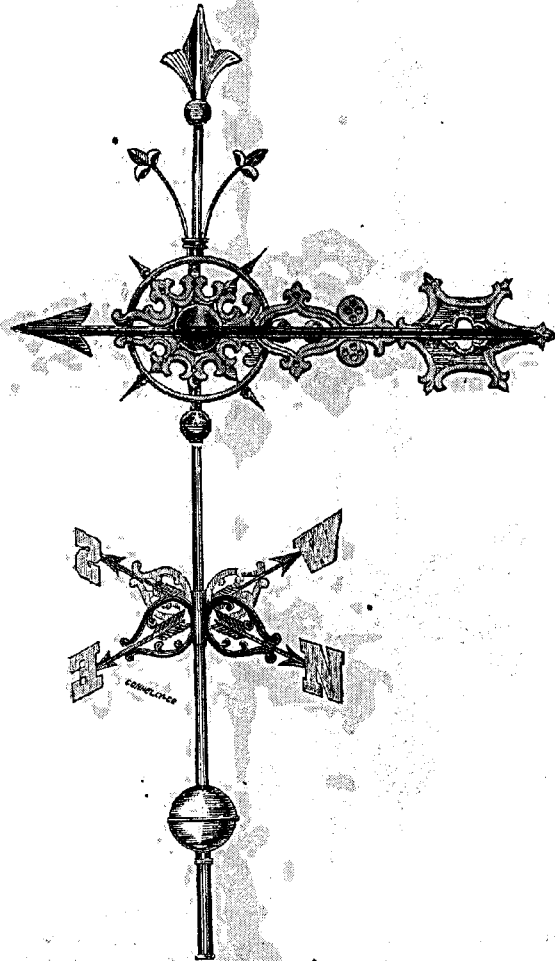
TIFFANY VANE.



No. 2704. 3 feet long.....	\$45 00
" 277. 6 " .....	60 00
" 278. 7½ " .....	80 00

187 All our Vanes are made of copper, and gilded with finest gold leaf.

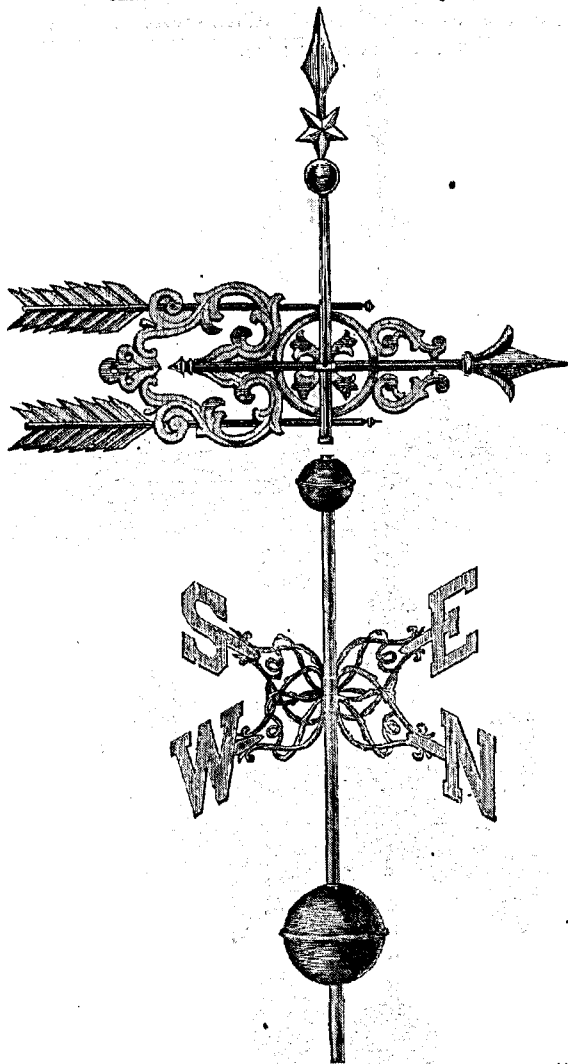
CHURCH OR SCROLL VANE.



No. 233.	6 feet long.....	\$300 00
" 233.	7 " .....	120 00
" 234.	8 " .....	140 00

All our Vanes are made of copper, and gilded with finest gold leaf.

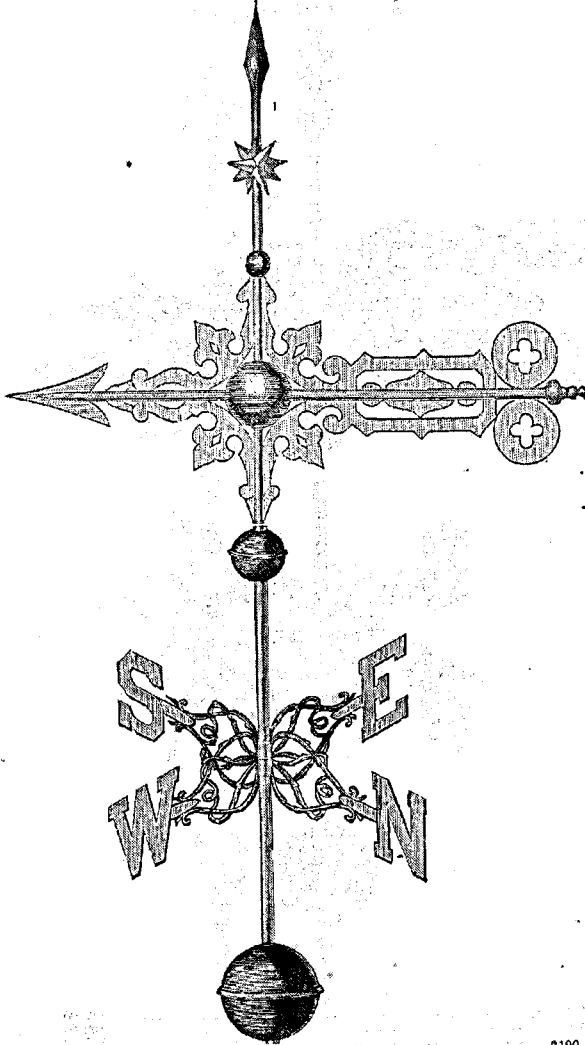
**CENTENNIAL SCROLL VANE.—New Design.**



No. 255.	5 feet long .....	\$80 00
" 256.	" .....	100 00
" 257.	" .....	130 00
" 258.	" .....	150 00

**All our Vanes are made of copper, and gilded with finest gold leaf.**

NEW DESIGN CHURCH VANE.

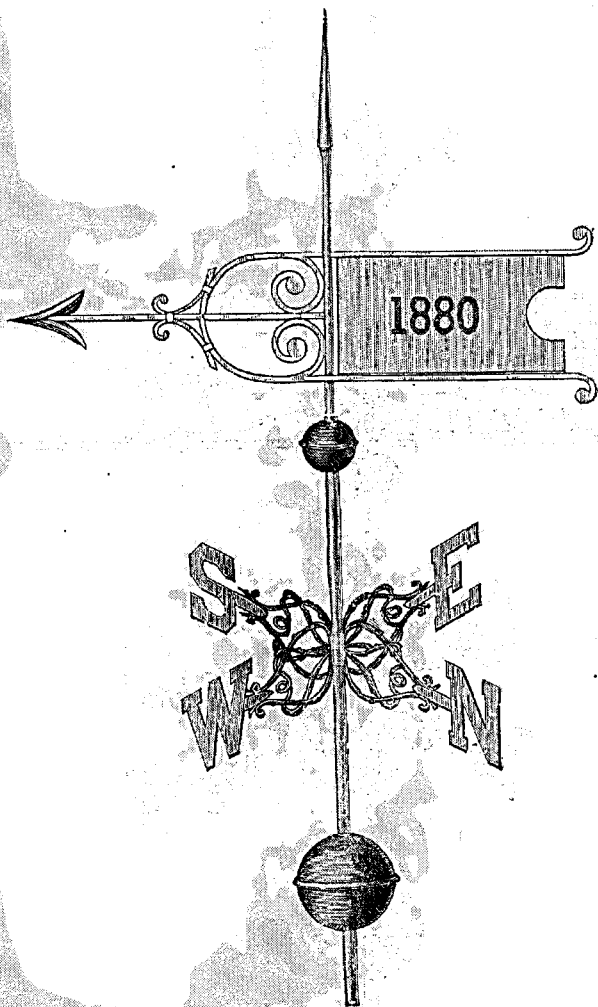


No. 813.	6 feet long	.....	\$100 00
" 814.	7 "	.....	130 00
" 815.	8 "	.....	140 00

All our Vanes are made of copper, and gilded with finest gold leaf.



NEW DESIGN BANNERET.



No. 18.	4 feet long .....	\$65 00
" 184.	4 " 6 inches long .....	70 00

Any number, monogram or initial cut in panel without extra charge.

SIGN VANE, WITH ANY NAME.



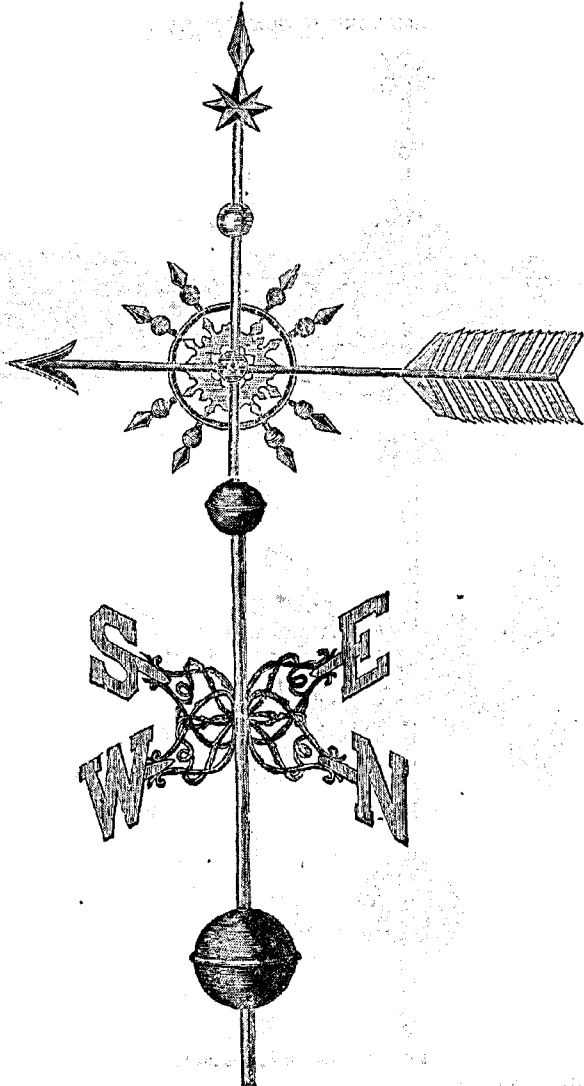
Letters in Name Decorated in Black.

No. 764. A.	6 feet long.....	\$90 00
" 764. B.	7 " .....	120 00
" 764. C.	8 " .....	150 00

All our Vanes are made of copper, and gilded with finest gold leaf.



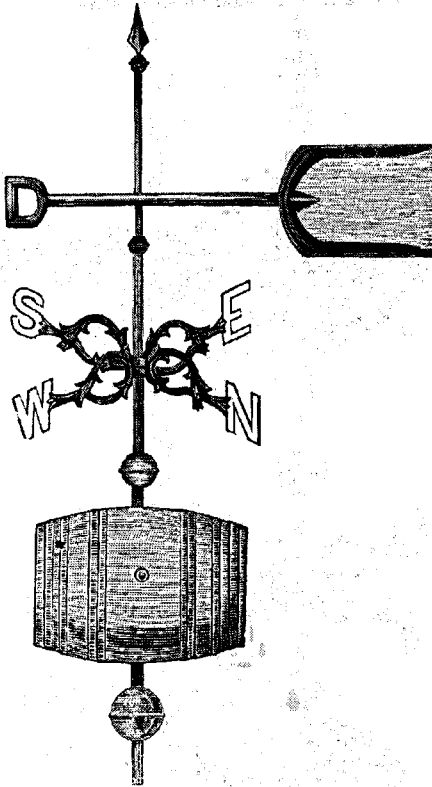
METROPOLITAN SCROLL VANE.



No. 68.	6 feet long	.....	\$80 00
" 69.	7 "	.....	90 00
" 70.	8 "	.....	125 00

☞ All our Vanes are made of copper, and gilded with finest gold leaf.

**BREWERS' AND MALSTERS' VANE.**



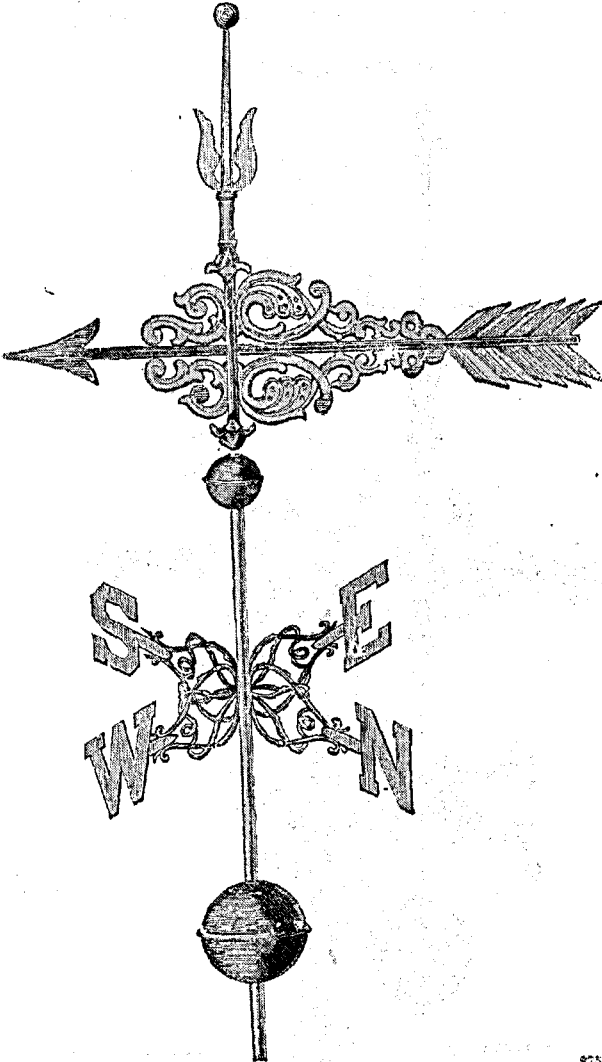
**MALT SHOVEL AND BARREL, EITHER SEPARATE OR TOGETHER.**

No. 52.	Shovel 5 feet long, Barrel raised 6 inches.....	\$50.00
" 53.	" 5 " without Barrel.....	60 00
" 53 1/2.	" 6 " Barrel raised 6 inches.....	95 00
" 54.	" 6 " without Barrel.....	75 00
" 54 1/2.	" 7 " Barrel raised 7 inches.....	120 00
" 55.	" 7 " without Barrel.....	90 00

Any size Shovel made to order with Barrel.



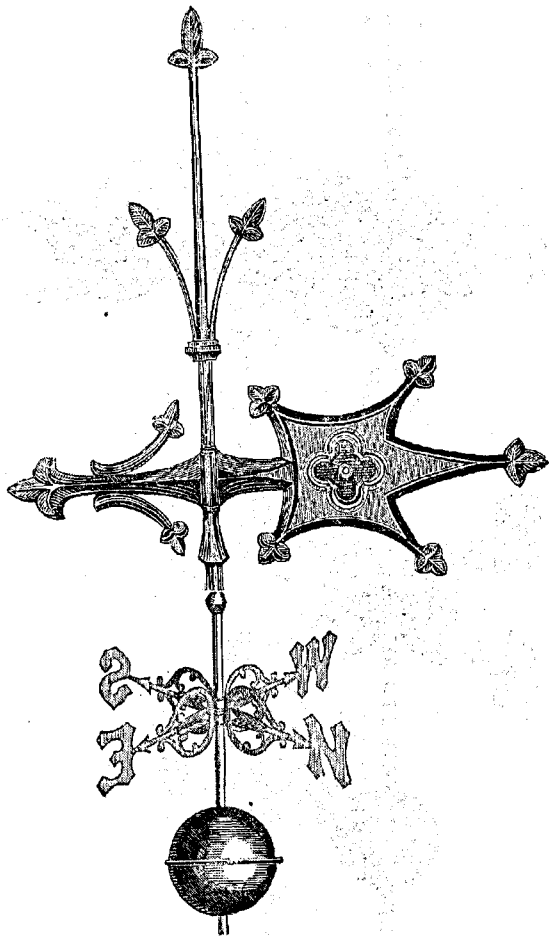
**NEW DESIGN CHURCH OR SCROLL VANE.**



No. 316.	5 feet long	.....	\$75 00
" 317.	6 "	.....	90 00
" 318.	7 "	.....	120 00

**⚠ All our Vanes are made of copper, and gilded with finest gold leaf.**

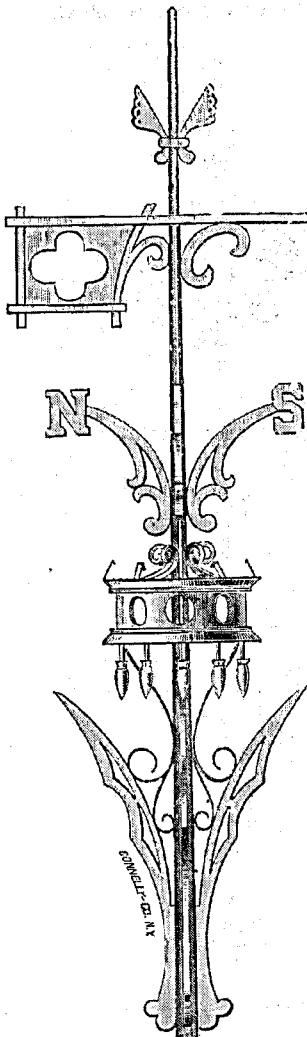
ENGLISH BANNERET.



No. 2924. 3 feet 6 inches long.....\$50 00

All our Vanes are made of copper, and gilded with finest gold leaf.

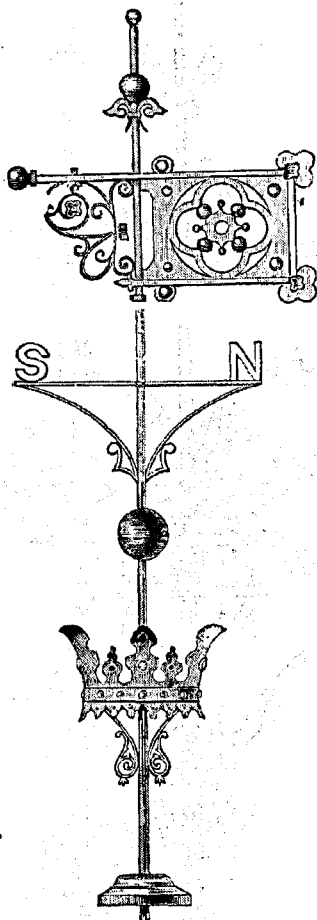
NEW DESIGN BANNERET, CROWN AND FINIAL VANE.



No. 310. Banneret, 4 feet long, complete as shown above.....\$130 00

Gilded and decorated in any color. Any size made to order.

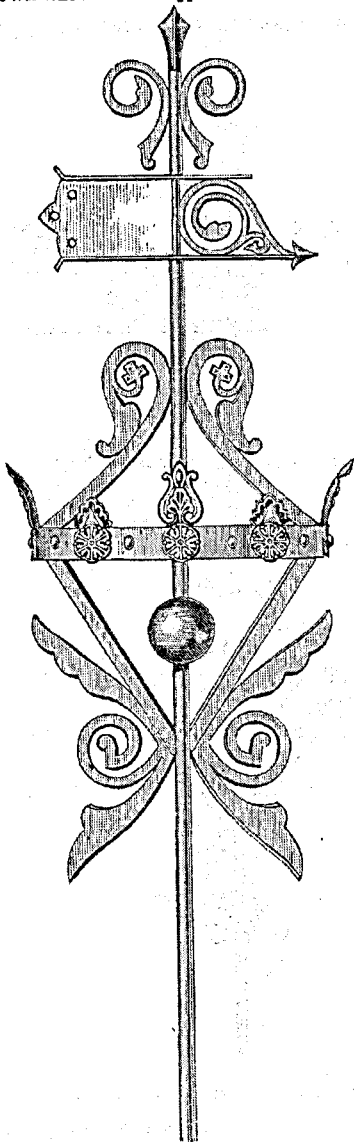
NEW DESIGN CROWN BANNERET.



No. 13. Banneret 30 inches long, Crown 24 inches diameter.....\$100 00


137 All our Vanes are made of copper, and gilded with finest gold leaf.

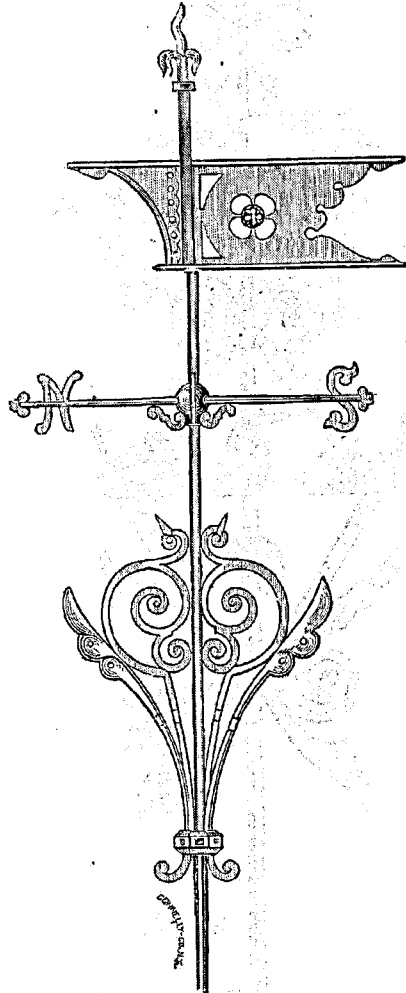
CROWN BANNERET.—Copper and Galvanized Iron.



No. 391 A. Height from bottom of Rod, 9 feet 10 inches, 4 sides.....\$125 00  
Banneret can be made with initial or ornamental device.

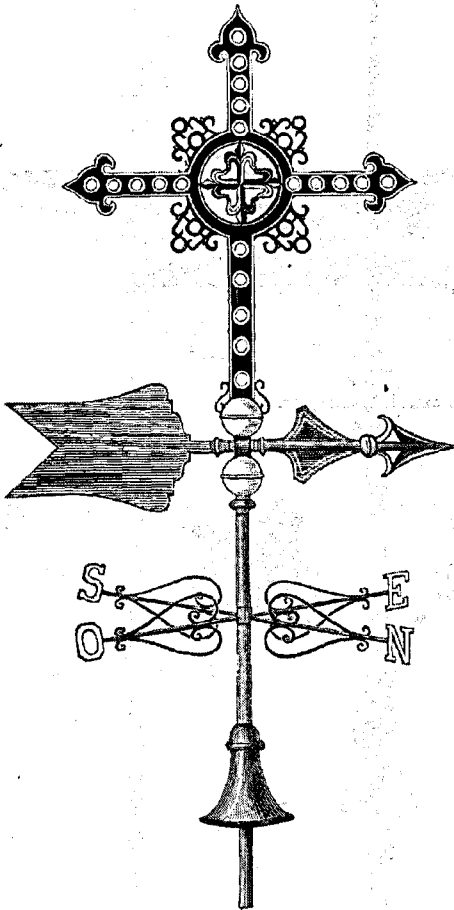


NEW DESIGN BANNERET AND SCROLLIVANE. 



No. 320.	Banneret, 3 feet long, scroll copper and gilded.....	\$100 00
" 321.	" " " mounted complete, as shown on page 60.....	50 00

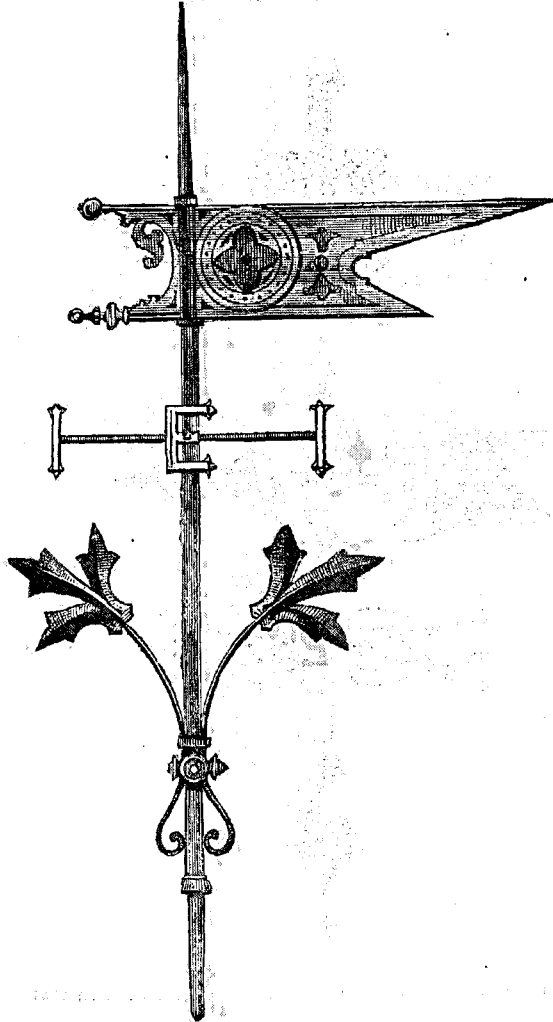
DOMINICAN CROSS AND VANE.—New Design.



No. 302 A, 16 feet high, Copper and Brass, gilded.....\$350 00

Any other design made to order.

ROMAN BANNERET.

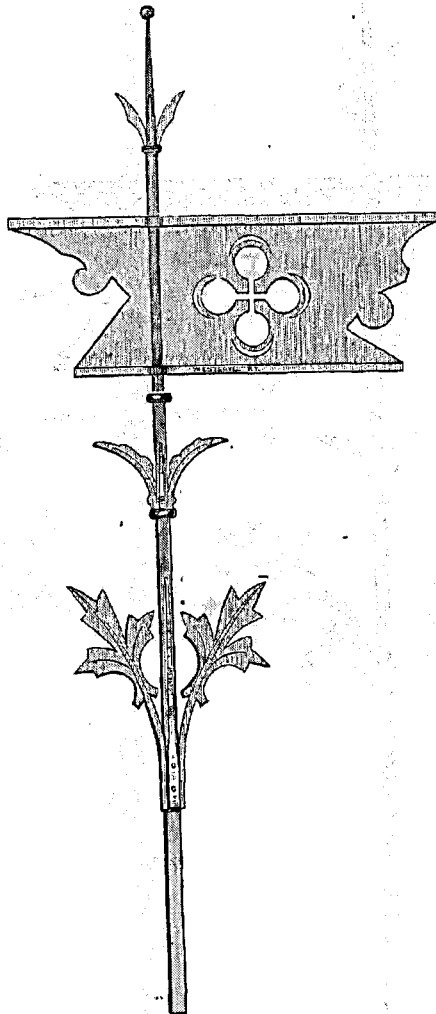


- |          |   |         |
|----------|---|---------|
| No. 290. | 3 feet long, ornaments of Iron, 4 sides, gilded and decorated in any color. | \$70 00 |
| " 291.   | 3 " 6 inches long, " " 4 " " " " " "  | 85 00   |
| " 292.   | 4 " long, " " 4 " " " " " "   | 100 00  |

Vaness of any design made to order at reasonable prices.



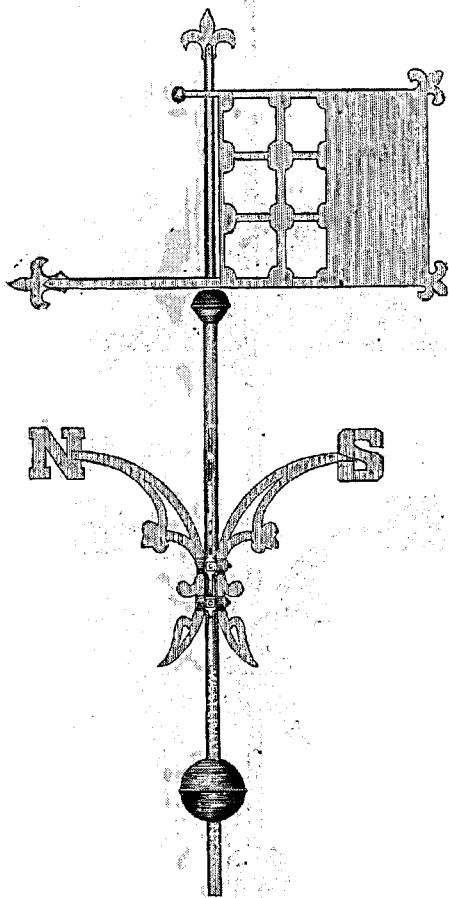
NEW DESIGN BANNERET AND FINIAL.



No. 224. 2 feet long, as shown above.....\$10 00  
" 225. 3 " " mounted, as shown on page 81..... 33 50  
Banneret of copper and gilded, finial of iron, decorated in gold and colors.



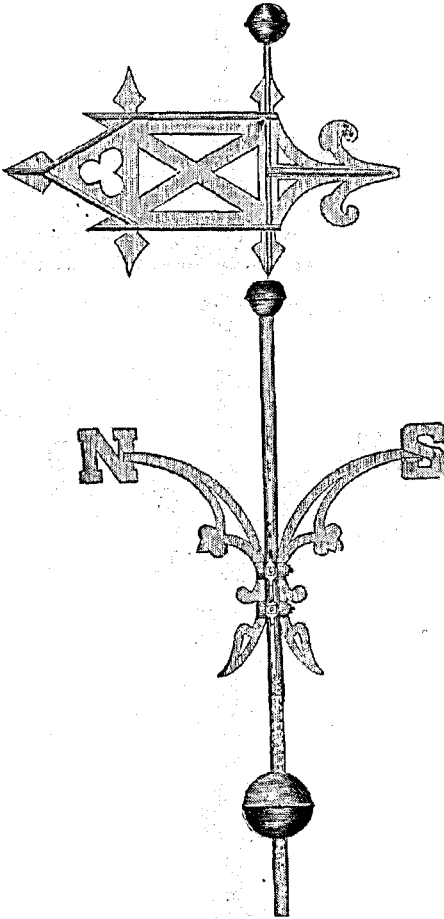
NEW DESIGN BANNERET.



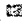
No. 326. 3 feet long, as shown above..... 852 50  
" 327. 3 " " " on page 81..... 47 50

Banneret of Copper and gilded, points of compass of iron, and decorated in gold and colors.

NEW DESIGN BANNERET.

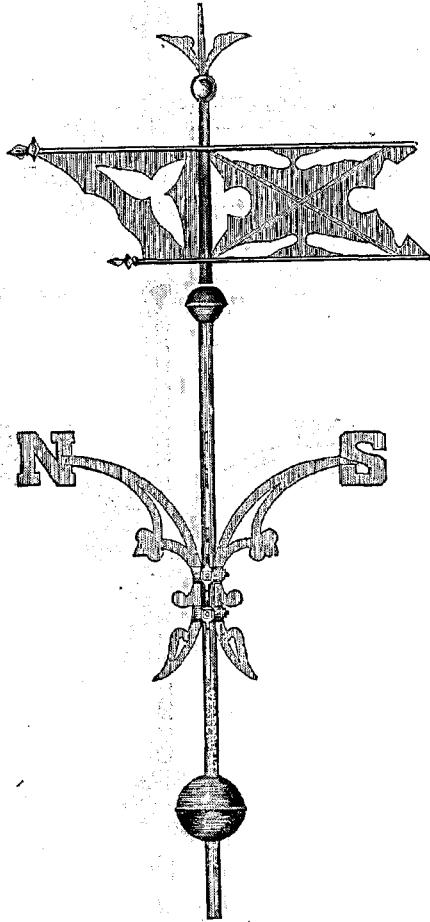


No. 325. 3 feet long, as shown above.....\$50 00  
" 320. 3 " " on page 81..... 45 00

 Banneret of copper and gilded, points of compass of iron, and decorated in gold and colors.



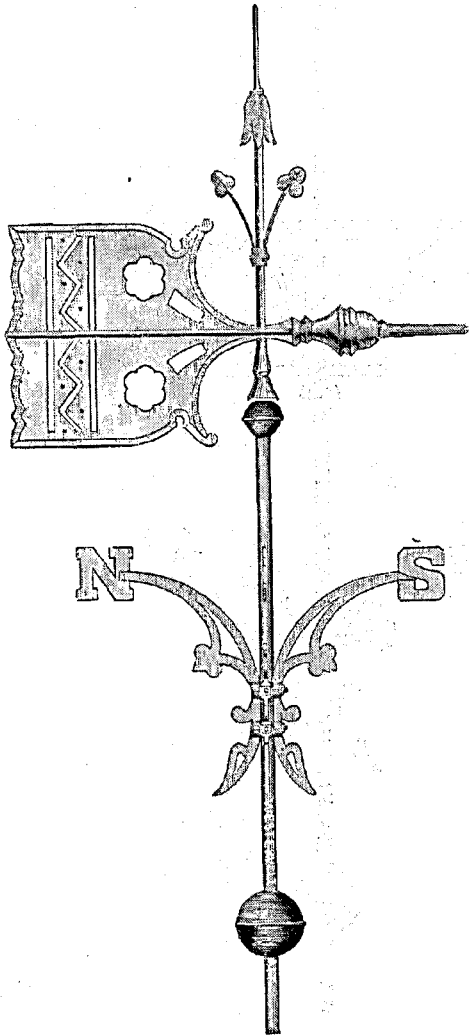
NEW DESIGN BANNERET.



No. 330.	3 feet 6 inches long, as shown above.....	\$60 00
" 231. # 3	" " " " on page 81.....	55 00

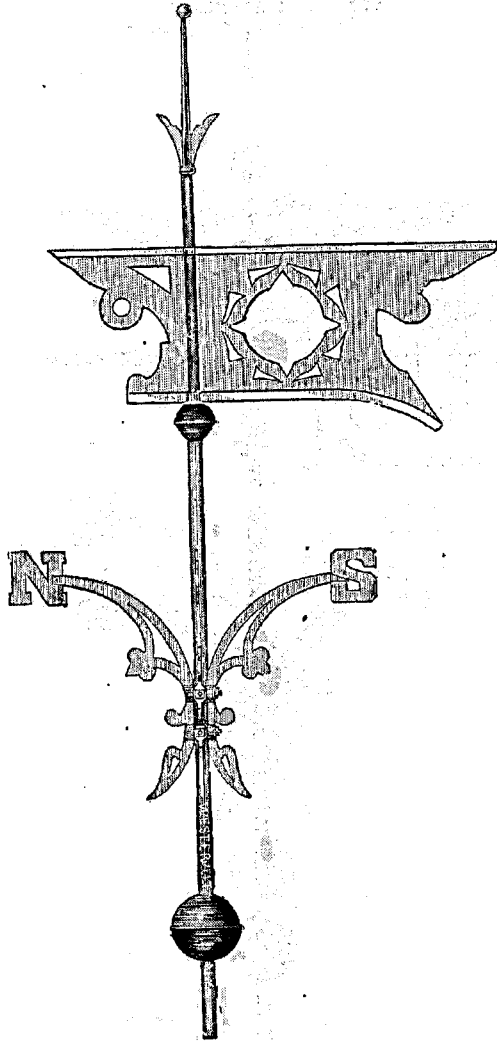
**Banneret of Copper and gilded, points of compass of iron, and decorated in gold and colors.**

NEW DESIGN BANNERET.



No. 332. 3 feet long, as shown above.....\$55 00  
" 333. 3 " " " on page 81 ..... 50 00

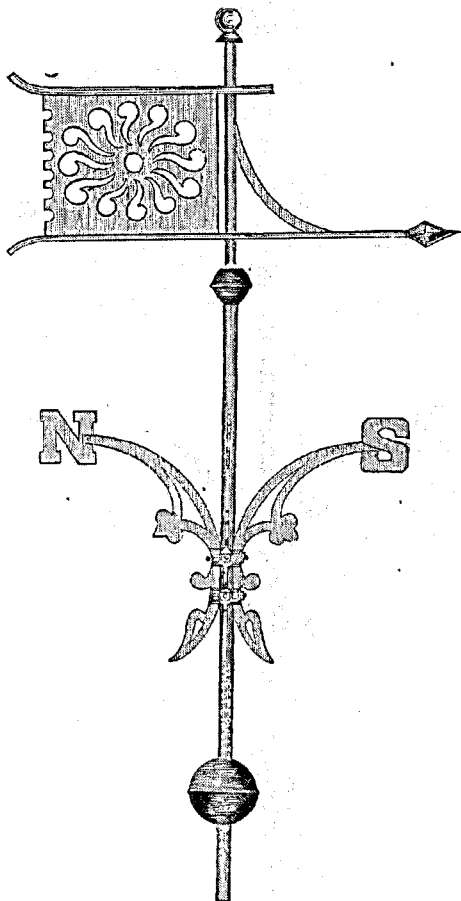
Banneret of Copper, points of compass of iron, decorated in gold and colors.



No. 334.	3 feet long, as shown above.....	850 00
" 335.	3 " " " " on page 51.....	45 00

Banneret of copper and gilded, points of compass of iron, and decorated in gold and colors.

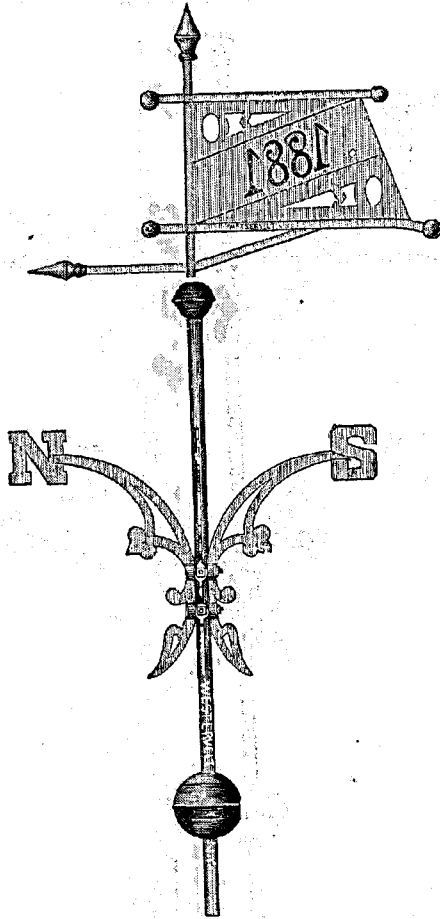
NEW DESIGN BANNERET.



No. 836. 3 feet long, as shown above. ....\$55 00  
" 837. 3 " " on page 81. .... 80 00

[837] Banneret of copper, points of compass of iron, decorated in gold and colors.

NEW DESIGN BANNERET.

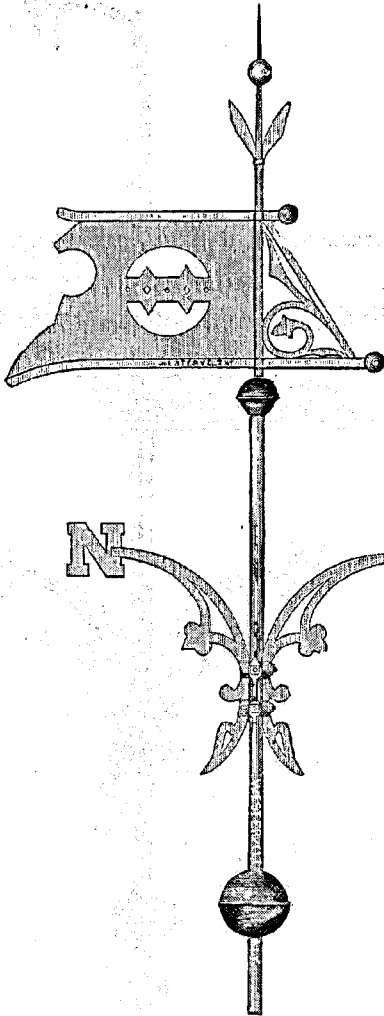


No. 333.	3 feet long, as shown above.....	\$50 00
339.	3 " " " on page 81.....	45 00

Banneret of Copper and gilded, points of compass of iron, and decorated in gold and colors.

Any number or initial cut in panel without extra charge.

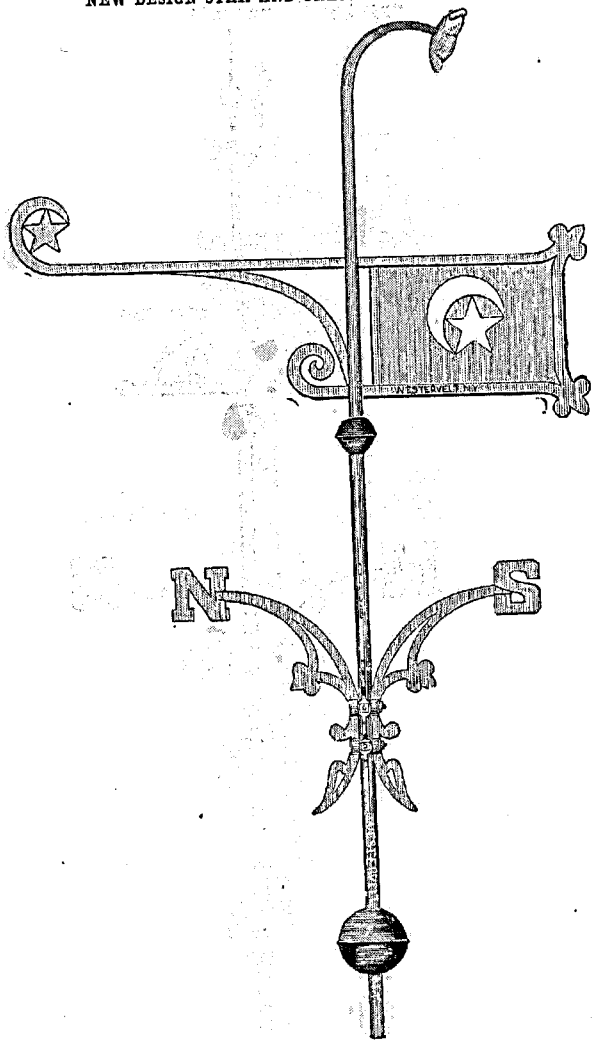
NEW DESIGN BANNERET.



No. 340. 8 feet long, as shown above. .... \$40 00  
" 311. 3 " " " on page 81. .... 42 50

**Banneret of copper, points of compass of iron, decorated in gold and colors.**

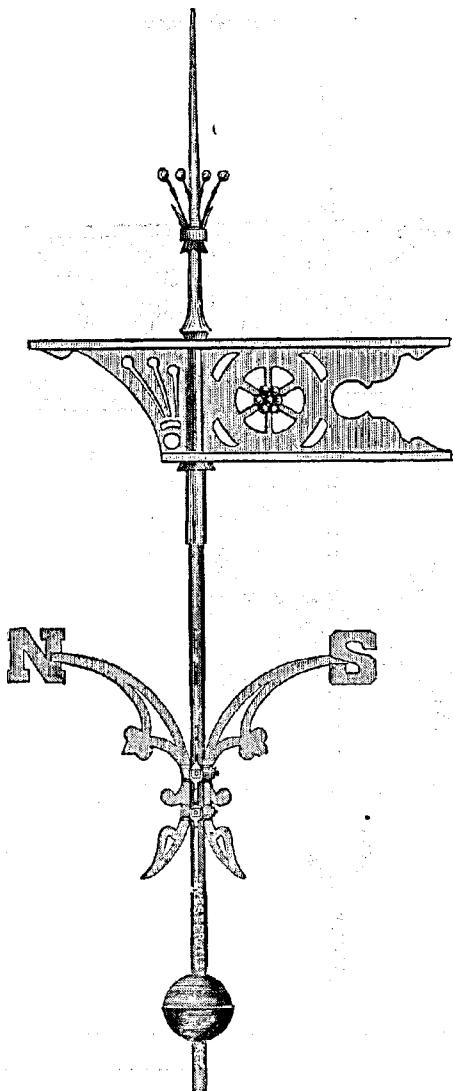
NEW DESIGN STAR AND CRESCENT BANNERET.



No. 342. 3 feet long, as shown above.....\$55 00  
" 343. 3 " " " on page 81.....50 00

343 Banneret of Copper and gilded, points of compass of iron, and decorated in gold and colors.

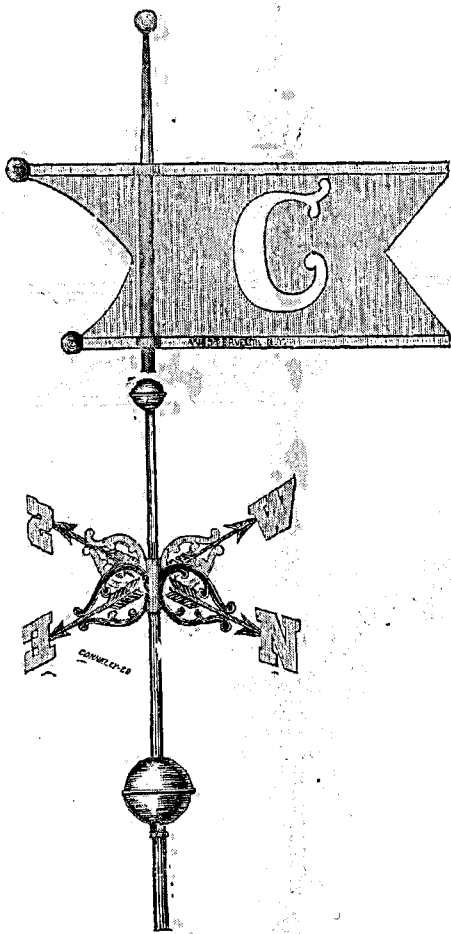
**NEW DESIGN BANNERET.**



No. 344. 3 feet long, as shown above.....\$55 00  
" 343. 3 " " on page 81..... 50 00  
Banneret of Copper and gilded, points of compass of iron, and decorated in gold and colors



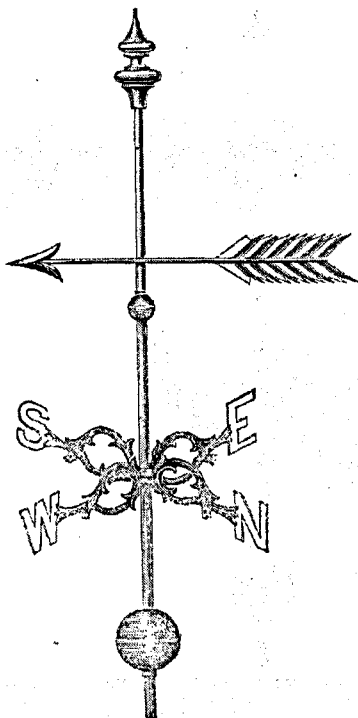
NEW DESIGN BANNERET.



No. 316.	3 feet 6 inches long.....	\$20 00
" 347.	3 feet long.....	42 50

All our Vanes are made of copper, and gilded with finest gold leaf.

ARROW VANE.

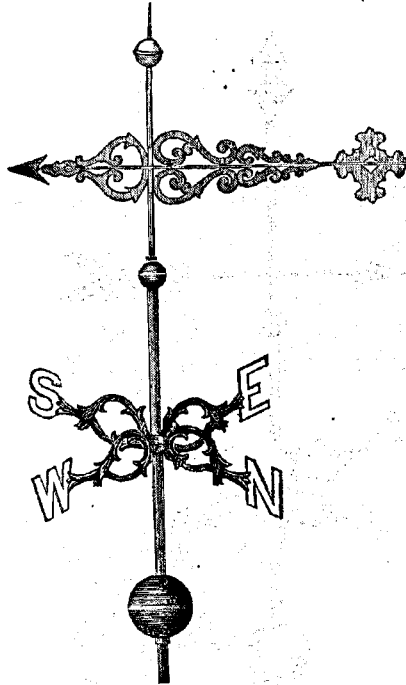


All our ARROW VANES are corrugated, thus greatly increasing their strength and beauty.

No. 246 n.	96 inches long	.....	\$100 00
" 246 A.	84 "	.....	70 00
" 246	72 "	.....	50 00
" 247	60 "	.....	30 00
" 248	48 "	.....	20 00
" 249	42 "	.....	18 00
" 250	36 "	.....	15 00
" 251	30 "	.....	10 00
" 252	24 "	.....	8 00
" 253	18 "	.....	6 00
" 254	15 "	.....	5 00
" 255	12 "	.....	4 00

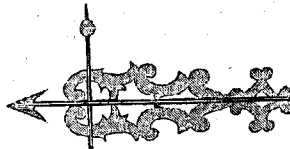
The above prices are with Spire, appropriate Letters and Balls complete.

CHURCH OR SCROLL VANE.



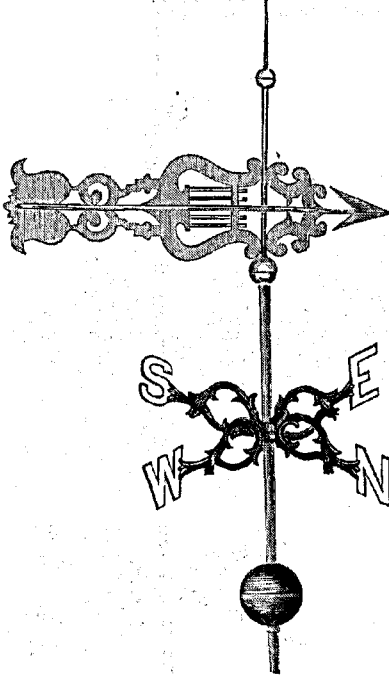
No. 256.	Scroll Vanes 12 feet long.	\$125 00	No. 265.	Small scroll, 4 feet long....	\$20 00
" 257.	" 10 "	100 00	" 266.	" 8½ "	18 00
" 258.	" 8 "	90 00	" 267.	" 8 "	15 00
" 259.	" 7 "	80 00	" 268.	" 2½ "	12 00
" 260.	" 6 "	65 00	" 269.	" 24 inches long.	10 00
" 261.	" 5½ "	45 00	" 270.	" 18 "	8 00
" 262.	" 5 "	35 00	" 271.	" 15 "	6 00
" 263.	" 4½ "	25 00	" 272.	" 12 "	5 00
" 264.	" 4 "	23 00	" 273.	" 8 "	4 50

SCROLL VANE.



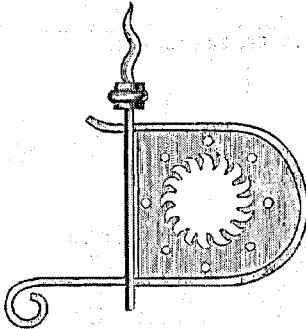
No. 22. 28 inches long, mounted complete, as shown above.....\$14 00

LYRE BANNERET.—For Music Halls, &c.



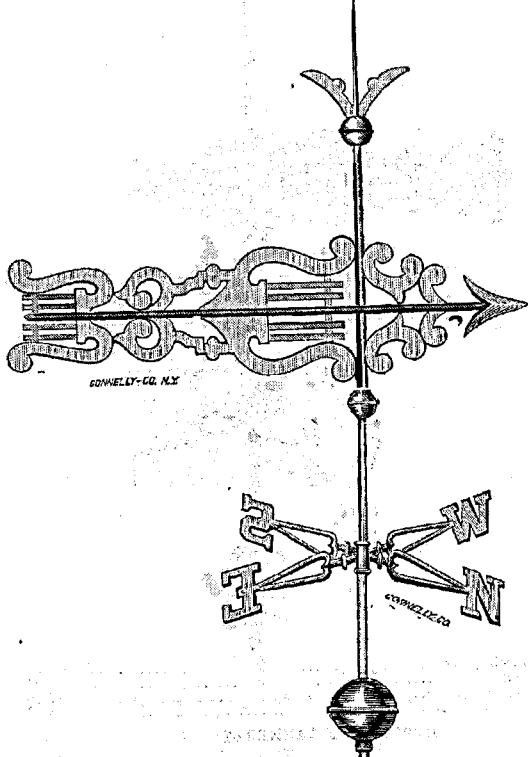
No. 56.	3 feet 9 inches long.....	\$20 00
" 57.	3 feet long.....	25 00
" 58.	4 " .....	35 00
" 59.	6 " .....	45 00

NEW DESIGN BANNERET.

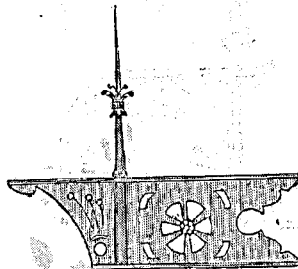


No. 348.	2 feet 6 inches long, mounted complete, as shown above.....	\$30 00
" 349.	3 feet long, " " " " .....	40 00

SCROLL HARP VANE.—New Design.



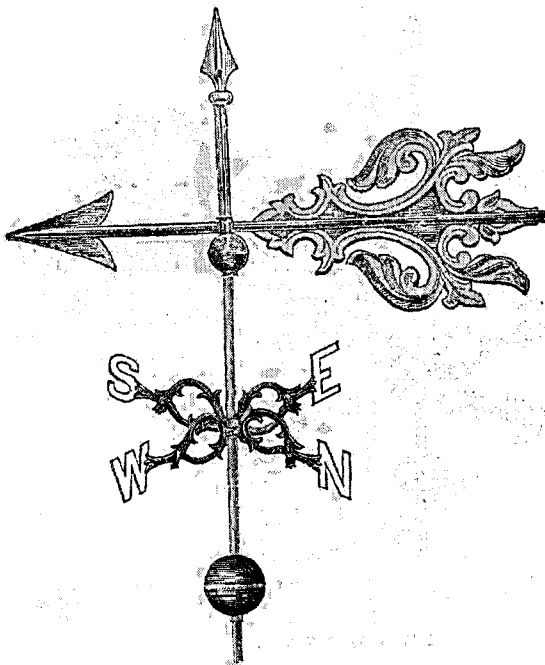
No. 330. 4 feet long.....\$39 00 | No. 331. 5 feet.....\$48 00  
 NEW DESIGN BANNERET.



No. 332. 3 feet long, mounted complete, as shown above..... \$3  
 " 333. 2 feet 8 inches long, mounted complete, as shown above..... 30 00

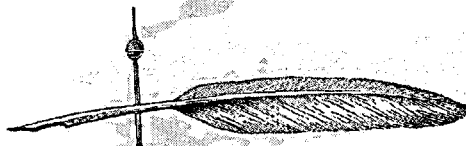


ROMAN SCROLL.—Old Design.



No. 237.	3 feet long.	.....	820 00
" 238.	4 "	.....	25 00
" 239.	5 "	.....	40 00
" 240.	7 "	.....	50 00

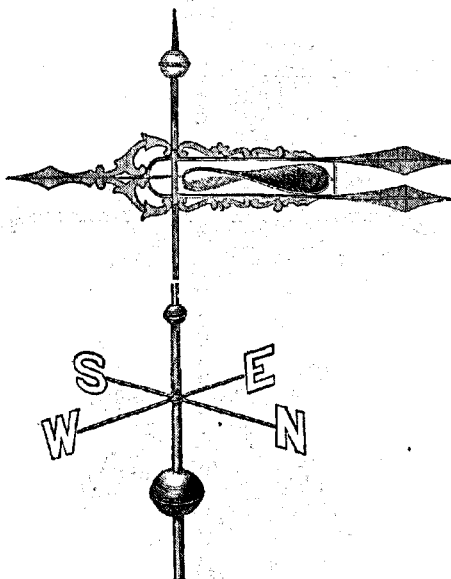
PEN VANE.



Especially designed and adapted for Newspapers, Libraries, Banks, Schools, Colleges, Academies, and other Public Institutions.

No. 241.	3 feet long, mounted complete, as shown above.	.....	813 00
" 242.	3 "	.....	18 00
" 243.	4 "	.....	23 00
" 244.	5 "	.....	40 00
" 245.	6 "	.....	35 00

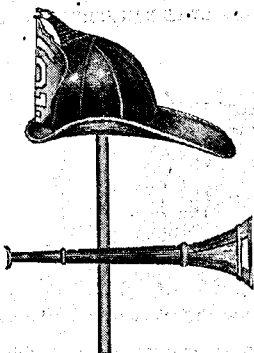
**SPARKLING VANE.**



This is a new and attractive Vane. The fan is covered with a glittering silvery substance, making a very showy appearance while revolving in the wind.

No. 46.	4 feet long	.....	\$80 00
" 47.	5 "	.....	40 00
" 48.	6 "	.....	70 00
" 49.	7 "	.....	80 00

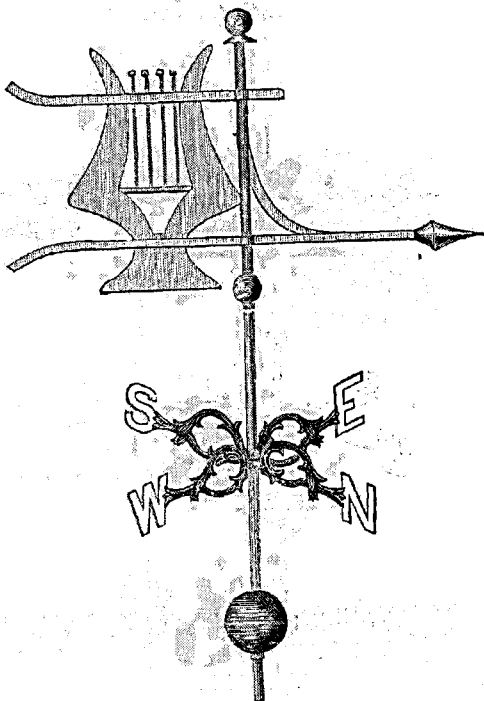
**FIREMAN'S CAP AND TRUMPET VANE.**



No. 381.	Hat 3 feet long, trumpet 2 feet 6 in. long, mounted complete, as shown above,	\$30 00
" 382.	" 2 " 6 in." " 3 " 6 "	65 00

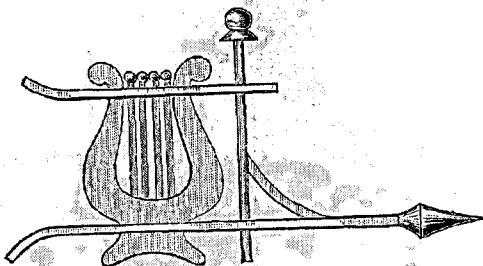


NEW DESIGN LYRE BANNERET.—For Music Halls, &c.



No. 334. 3 feet 6 inches long, double thickness..... \$60 00

NEW DESIGN LYRE BANNERET.—For Music Halls, &c.



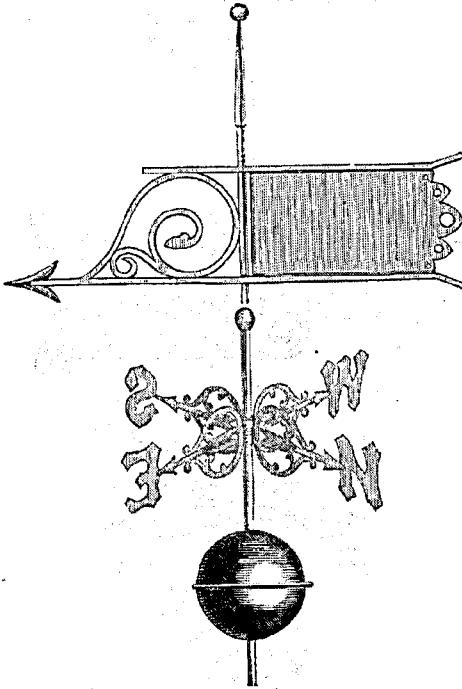
No. 355. 3 feet 6 inches long, single thickness, mounted complete, as shown above.. \$40 00

All our Vanes are made of copper, and gilded with finest gold leaf.



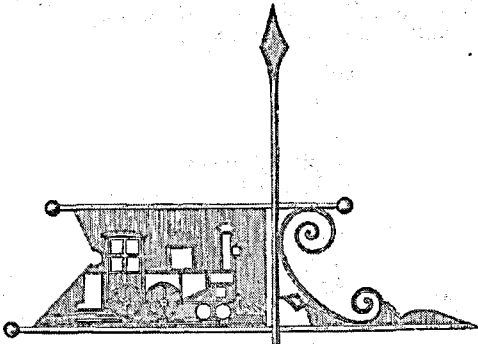


BANNERET. NEW DESIGN.



- |  |                           |         |
|--|---------------------------|---------|
| No. 7.   | 3 feet 0 inches long..... | \$50 00 |
| " 7 1/2.   | 4 feet long.....          | 60 00   |
| Any number, monogram or initial cut in panel without extra charge. |                           |         |

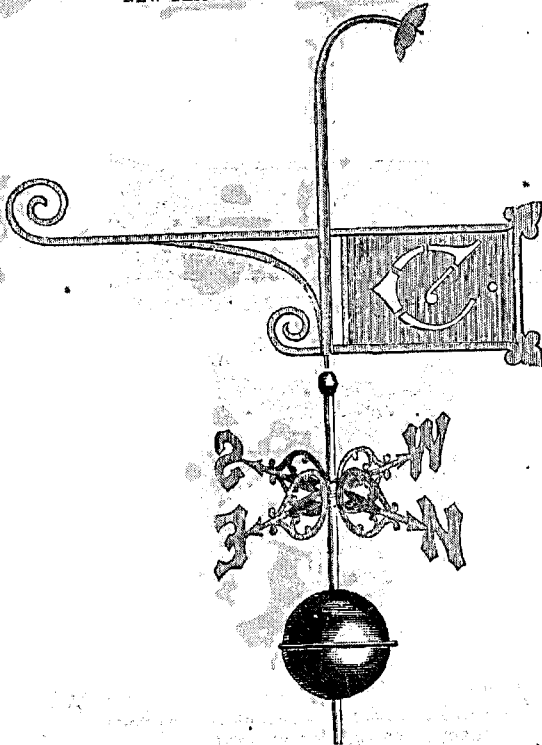
SCROLL AND LOCOMOTIVE VANE.



- |            |   |         |
|------------|---|---------|
| No. 8.     | 4 feet 6 inches long, mounted complete, as shown above..... | \$60 00 |
| No. 8 1/2. | 5 feet long.....  | 70 00   |

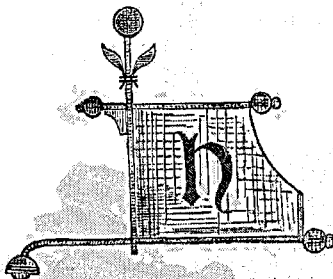
☞ All our Vanes are made of copper, and gilded with finest gold leaf.

NEW DESIGN INITIAL BANNERET.



No. 11. 3 feet long.....\$45 00 | No. 111. 4 feet long.....\$60 00  
 Any number, monogram or initial cut in panel without extra charge.

NEW DESIGN INITIAL BANNERET.

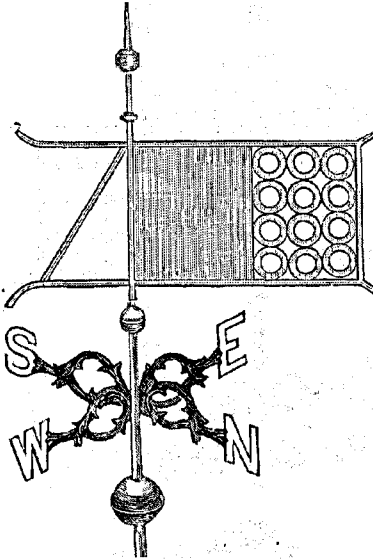


No. 12. 3 feet long, mounted complete, as shown above.....\$40 00  
 121. 2 feet 6 inches long, mounted complete, as shown above..... 50 00  
 Any number, monogram or initial cut in panel without extra charge.



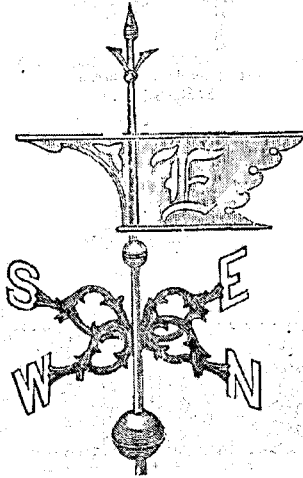


**NEW DESIGN BANNERET.**



No. 15. 2 feet 6 inches long.....\$33 00  
 " 15½ 3 " long.....40 00

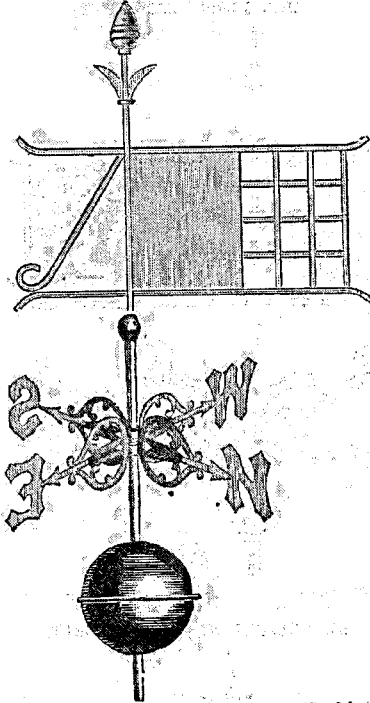
**NEW DESIGN INITIAL BANNERET.**



No. 239. 2 feet 6 inches long.....\$20 00  
 " 240. 3 " long.....40 00

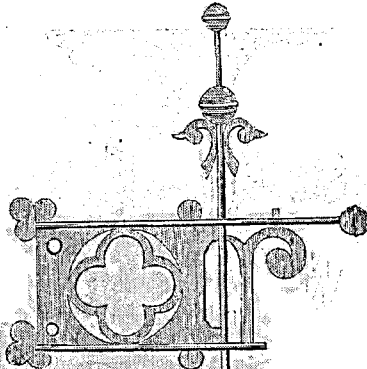


NEWPORT BANNERET.—New Design.



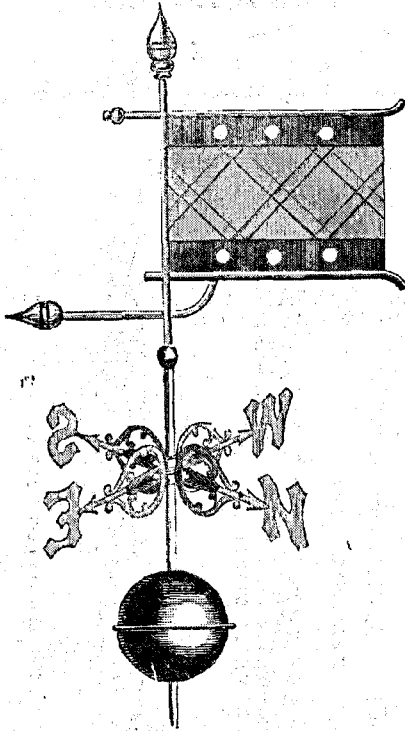
No. 17. 2 feet 6 inches long.....\$35 00      No. 17a. 3 feet long.....\$40 00  
 Any other size made to order.

BANNERET.



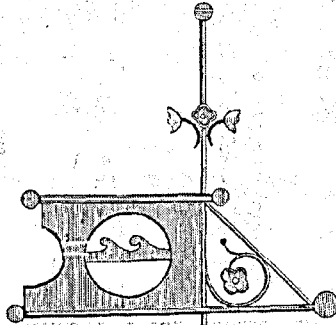
No. 19 A. 3 feet long, mounted complete, as shown above.....\$35 00  
 " 19a. 3 " 6 inches long, mounted complete, as shown above..... 30 00

MANHATTAN BEACH HOTEL BANNERET, BLUE AND GOLD.



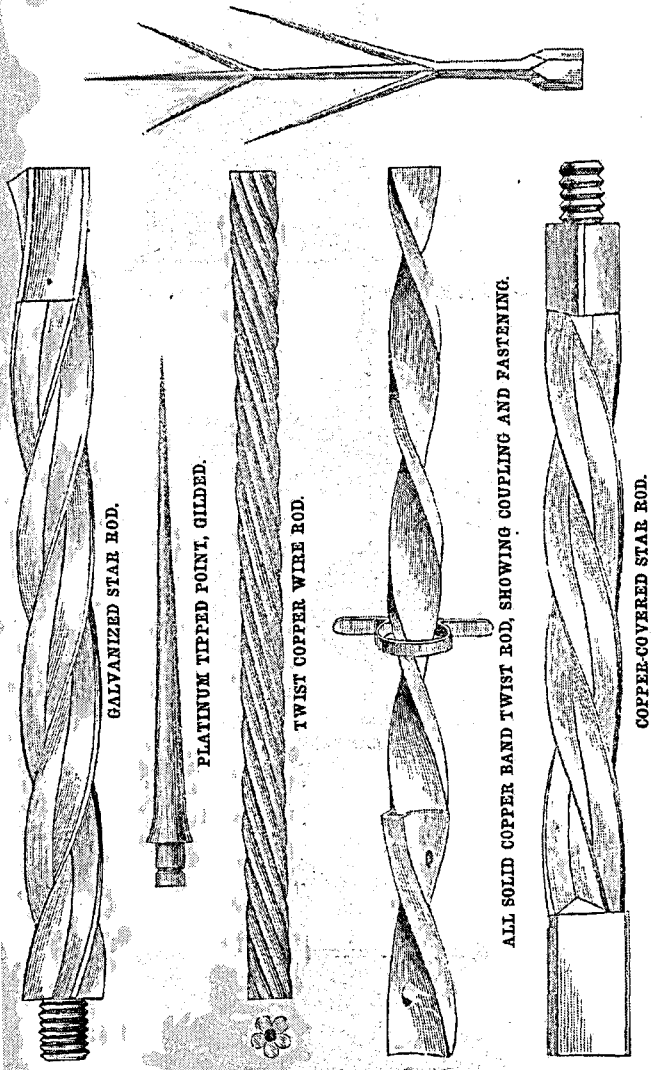
No. 20. 3 feet long.....\$35 00 | No. 20 A. 4 feet long.....\$55 00

BANNERET.



No. 204 A. 3 feet long, mounted complete, as shown above .....\$35 00  
 " 21 B. 2 " 6 inches long, mounted complete, as shown above..... 25 00

LIGHTNING CONDUCTORS.

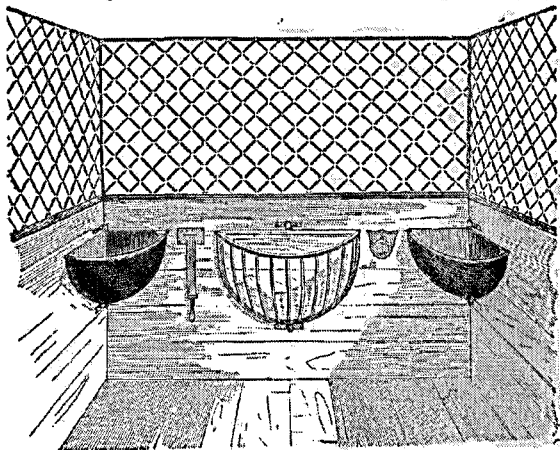


NEW YORK AGENCY FOR LIGHTNING RODS.

A. B. & W. T. WESTERVELT, 102 CHAMBERS STREET, N. Y.

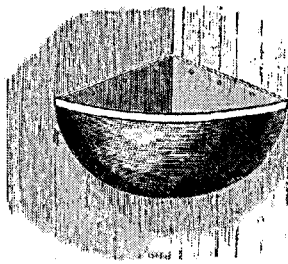
**NEW AND IMPROVED  
NICKEL-PLATED, POLISHED BRONZE AND IRON  
STABLE FIXTURES,**

Newest Designs at Lowest Prices. Send for Catalogue and Prices.

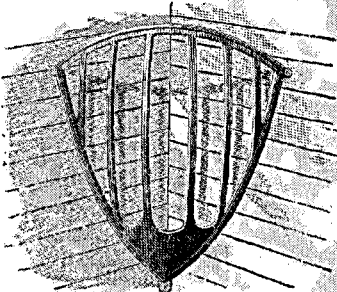


CAST CORNER MANGER.

CAST CORNER HAY RACK.



Corner Manger, Food Guard all around.



MANUFACTURED BY

**A. B. & W. T. WESTERVELT,**

No. 102 CHAMBERS STREET,

Cor. Church Street,

**NEW YORK.**

Estimates given for all kinds of Wrought and Cast-Iron Work, Copper Weather Vanes, Finials, Crestings, &c. Catalogues on Application.

G4552